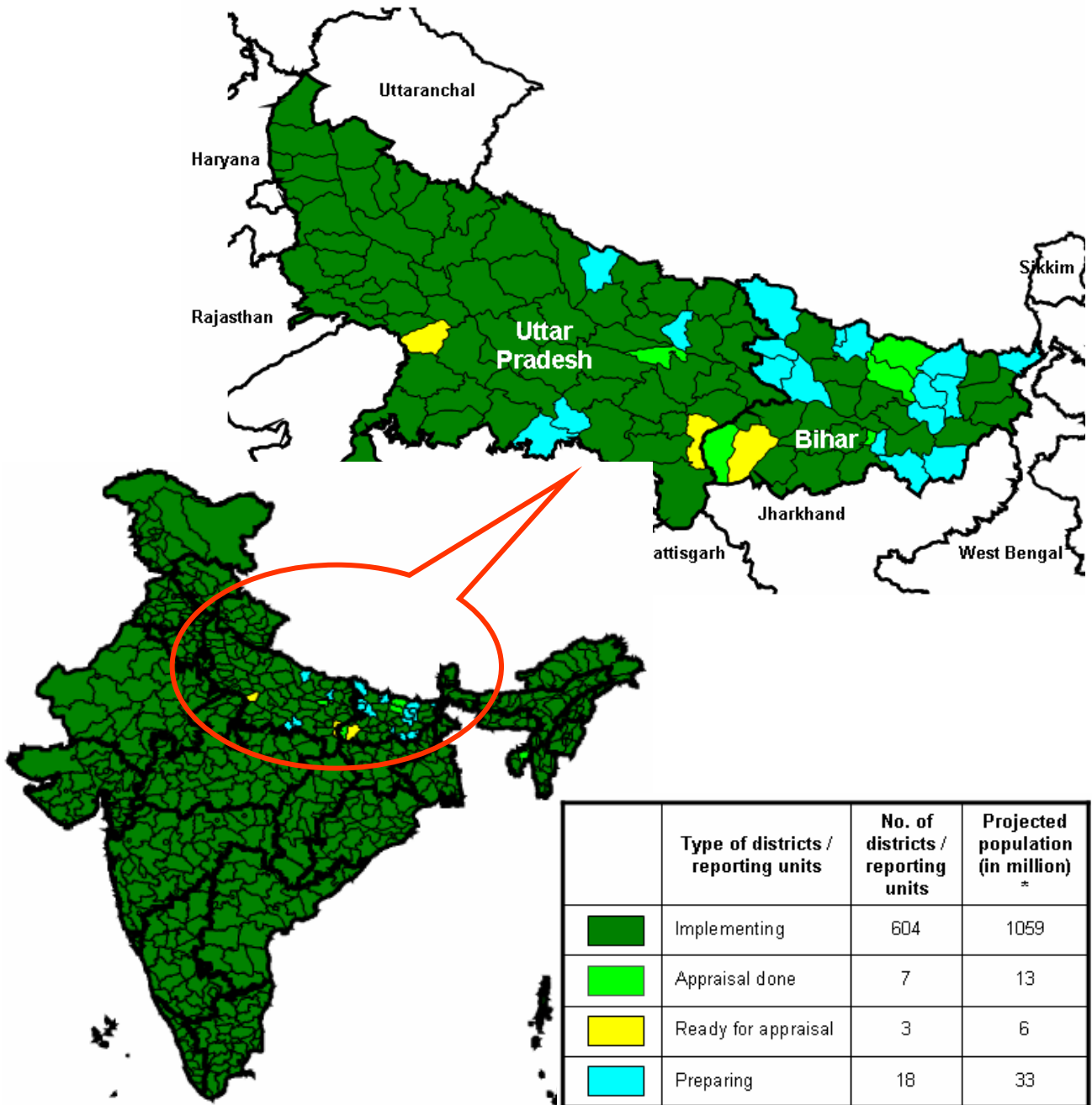


RNTCP Performance Report, India Third Quarter, 2005

District-wise RNTCP Implementation status

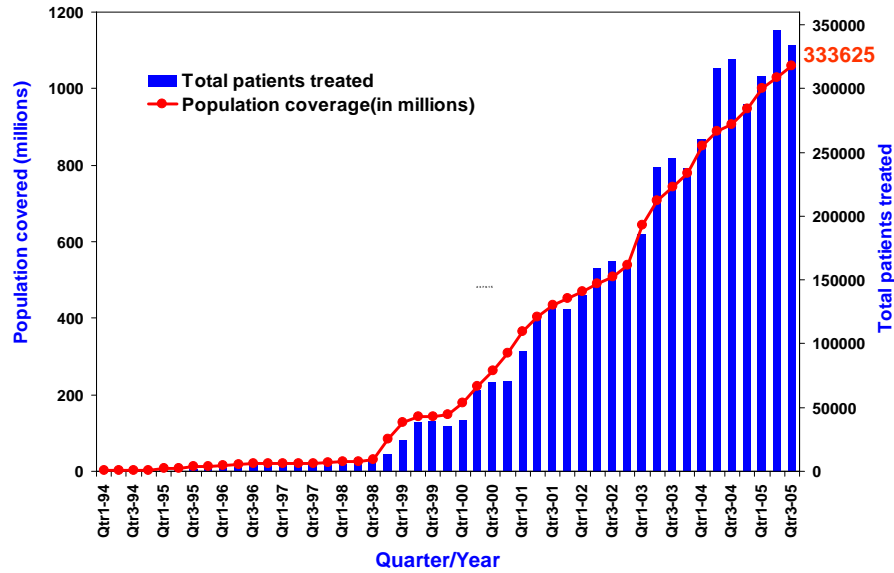


* 2005 projected population based on 2001 census.

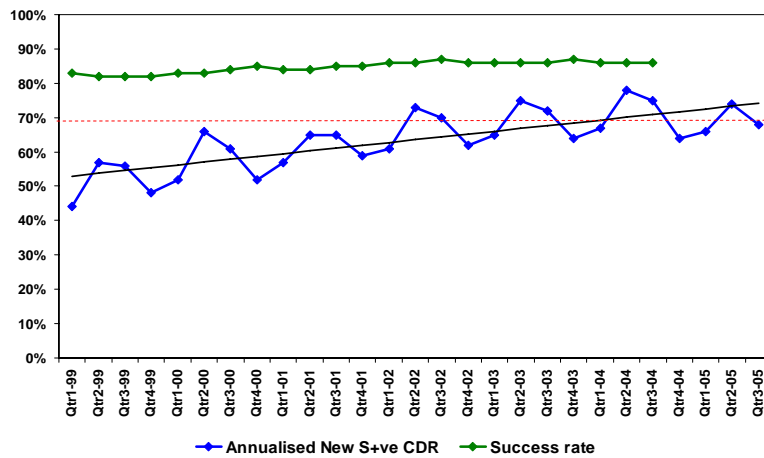


Central TB Division, Directorate General of Health Services
Ministry of Health and Family Welfare, Nirman Bhavan, New Delhi 110011
<http://www.tbcindia.org>

Population in India covered under DOTS and total tuberculosis patients put on treatment each quarter

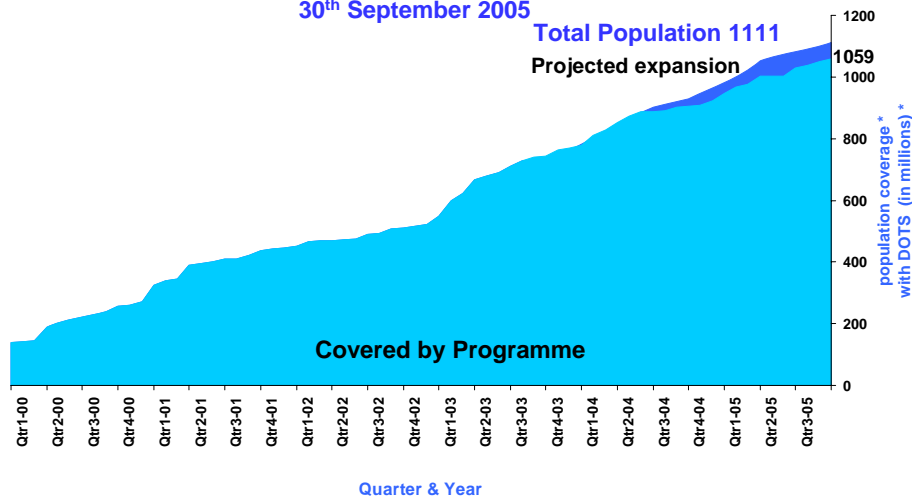


Annualized new smear-positive case detection rate and treatment success rate in DOTS areas, 1999-2005 *



* Estimated no. of NSP cases - 75/100,000 population per year (based on recent ARTI report)

Multiyear DOTS expansion plan for India * 30th September 2005



* Projected population based on 2001 census.

DOTS Expansion 3rd Quarter 2005

Dear Colleagues,

At the end of 3rd quarter, 2005, DOTS services under Revised National Tuberculosis Control Programme are accessible to 95% of the country. The population coverage in the 3rd quarter has increased from 1030 million to 1059 million.

Performance

Almost the entire country now has access to DOTS services except a few districts in Bihar and Uttar Pradesh. All efforts are being made to cover these districts at the earliest. The overall performance of the programme at the national level continues to be good, and is showing progress. The case detection rate for the 3rd quarter of 2005 was 68% with a total of 333,625 patients placed on treatment. The success rate amongst the new smear positive PTB cases registered in the 3rd quarter of 2004 was 86%. The sputum conversion rate and cure rate among the new sputum positive cases was 88% and 84% respectively.

In addition to the 132,397 new smear positive cases, 98,047 new smear negative cases, 43,526 extra pulmonary cases, and 45,974 smear positive re-treatment cases were also initiated on treatment in this quarter. The extra-pulmonary TB cases accounts for 16% of all new cases in the quarter and re-treatment cases for 26% of all smear positive cases.

Supervision and Monitoring

Training modules for all levels of functionaries in the programme have been modified in view of the new activities introduced in the programme. These are now available on RNTCP website: www.tbcindia.org

Quality Assurance of sputum smear microscopy

National Lab. Network Committee meeting was held in September 2005 to confirm the designation of IRL by the states, to review the progress in training of STDCs and district staff on EQA and also to plan next steps for EQA implementation. The meeting was attended by the STOs and STDC Directors, besides experts from National Institutes and WHO.

Other Initiatives:

DOTS Plus Meeting: A national level meeting of experts was held in September 2005 to discuss and finalize operational and technical guidelines for implementation of DOTS plus in the country.

HIV Surveillance among TB patients: HIV surveillance among TB patients has started in four districts (one in each state) of 4 high HIV prevalence states - AP, Karnataka Maharashtra and Tamil Nadu with the objective to obtain an estimate of point prevalence of HIV in newly detected TB patients; and also to determine the trend of HIV prevalence in such patients

Training for Capacity Building: A national level training of IEC officers of all states for capacity building in planning and implementation of was held in August 2005 in collaboration of DANTB in Orissa.

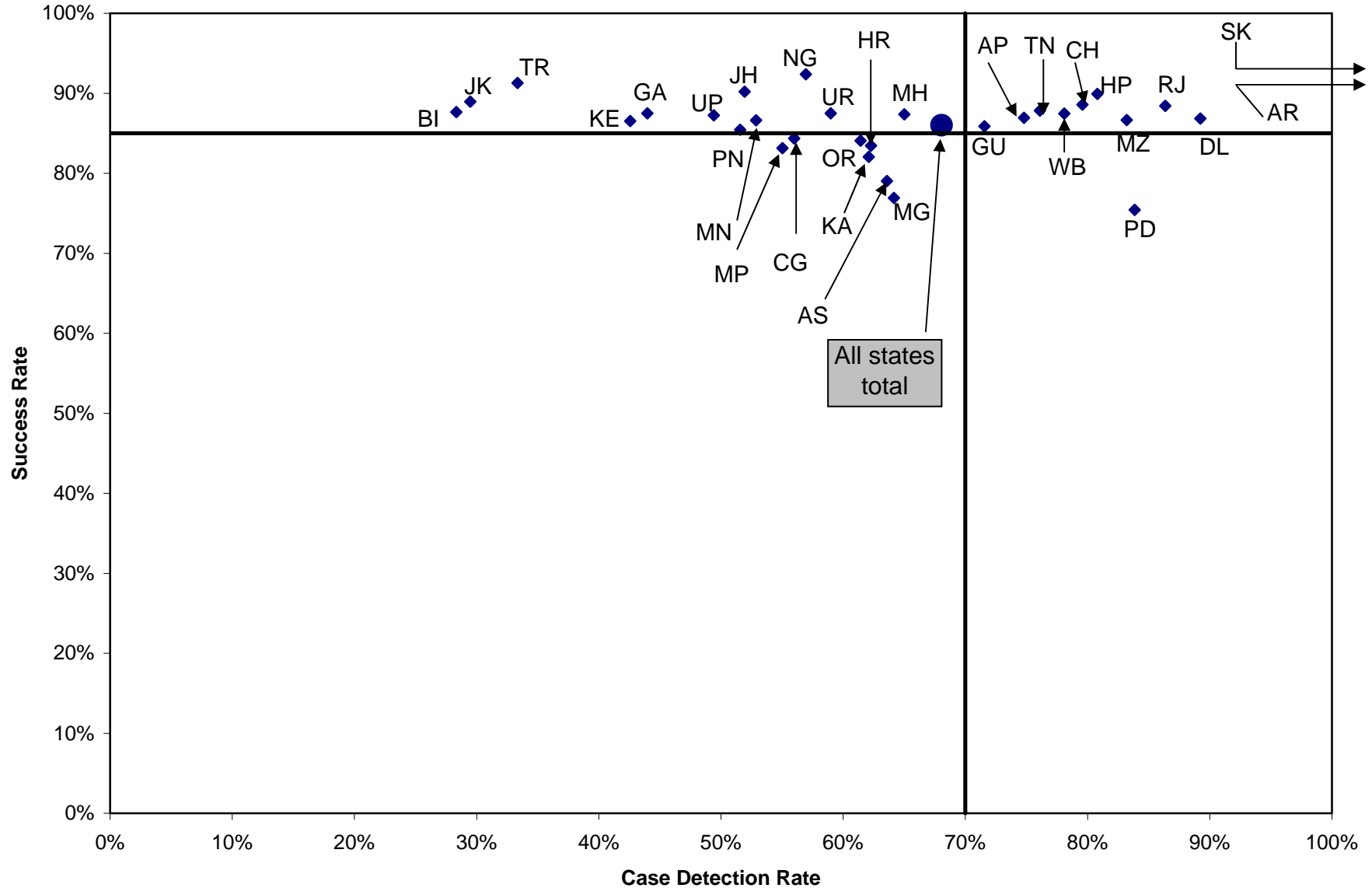
End-term KAP study: A number of initiatives have been undertaken to increase the awareness about the availability of DOTS services, and also increase the utilization of these services. Since 2003, media activities undertaken on the basis of Baseline KAP study have been fine-tuned as per the findings of mid term KAP study. Besides media activities, states and districts have also undertaken IEC activities. An End-term KAP study has been initiated to assess the impact of these activities. The report would be available by Dec 2005.

A very small percentage of population still needs to be covered under RNTCP. The expansion in population during this quarter has been a little slow in order that there is no compromise on the quality of services delivered. The target is to cover the entire country at the earliest however whilst maintaining the quality of services

While some districts in Bihar and Uttar Pradesh are still getting ready to implement RNTCP, the performance of RNTCP in others parts of the country is satisfactory. We are proud of our progress and achievements; however we are also aware of the challenges that lie ahead. We need to ensure sustained political and administrative commitment to get the remaining districts to start implementing RNTCP. We are aware that we need to maintain the quality of the sputum microscopy services, for which procurement of quality and standardized lab consumable, training and retraining of staff, supervision and monitoring has to be ensured. There are many challenges and constraints, but I am confident that with the dedication and commitment of staff at district, state and national levels, we will continue to maintain the quality of the DOTS services.

Dr. L. S Chauhan,
Deputy Director General (TB)
Dte. G. H. Services, MOHFW
Government of India

Case Detection and Treatment Success Rates in RNTCP areas for 3rd quarter 2005/2004



AP- Andhra Pradesh; AR-Arunachal Pradesh; AS-Assam; BI-Bihar; CH-Chandigarh; CG-Chhatisgarh; DL-Delhi; GA-Goa; GU-Gujarat; HR-Haryana; HP-Himachal Pradesh; JK- Jammu & Kashmir; JH-Jharkhand; KA-Karnataka; KE-Kerala; MP-Madhya Pradesh; MH-Maharashtra; MN-Manipur; MG-Meghalaya; MZ-Mizoram, NG-Nagaland; OR-Orissa, PD-Pondicherry; PN-Punjab; RJ-Rajasthan; SK-Sikkim; TN-Tamil Nadu; TR-Tripura; UP-Uttar Pradesh; UR-Uttaranchal; WB-West Bengal

Performance of RNTCP Case Detection (2005, third quarter), Smear Conversion (2005, second quarter), and Treatment Outcomes (2004, third quarter)

State	Population (in lakh) covered by RNTCP ¹	No. of suspects examined	Suspects examined per lakh population	No of Smear positive patients diagnosed ²	% of S+ve cases among suspects	Total patients registered for treatment ³	Annualized total case detection rate	New smear positive patients registered for treatment	Annualized new smear positive case detection rate (%)	% new sputum positive out of total new pulmonary cases	No of new smear negative cases registered for treatment	No of new EP cases registered for treatment	% of new EP cases out of all new cases
A&N Islands	4 (100%)	917	234	65	7%	113		39		65%	21	40	40%
Andhra Pradesh	798 (100%)	105966	133	15954	15%	27052	136	11186	56 (75%)	55%	9316	2203	10%
Arunachal Pradesh	12 (100%)	2794	233	349	12%	624	208	236	79 (105%)	59%	166	68	14%
Assam	285 (100%)	27392	96	4744	17%	8263	116	3403	48 (64%)	56%	2672	698	10%
Bihar	511 (56%)	22252	44	3320	15%	7972	75	2239	21 (28%)	35%	4121	392	6%
Chandigarh	10 (100%)	3295	319	397	12%	652	253	195	76 (80%)	54%	168	161	31%
Chhatisgarh	222 (100%)	23159	104	3105	13%	5842	105	2488	45 (56%)	53%	2202	585	11%
D&N Haveli	3 (100%)	208	78	52	25%	46		34		89%	4	1	3%
Daman & Diu	2 (100%)	1060	563	75	7%	67		29		69%	13	8	16%
Delhi	160 (100%)	37596	234	6417	17%	11684	291	3401	85 (89%)	60%	2277	3297	37%
Goa	14 (100%)	2422	170	218	9%	374	105	125	35 (44%)	50%	125	59	19%
Gujarat	549 (100%)	80415	147	14081	18%	19157	140	7853	57 (72%)	70%	3411	2176	16%
Haryana	233 (100%)	35895	154	5902	16%	9273	159	3443	59 (62%)	62%	2086	1458	21%
Himachal Pradesh	65 (100%)	16403	253	2107	13%	3604	222	1244	77 (81%)	63%	722	843	30%
Jammu & Kashmir	112 (100%)	7547	68	685	9%	1176	71	510	28 (29%)	60%	333	374	31%
Jharkhand	292 (100%)	24114	82	3751	16%	7450	107	2797	39 (52%)	47%	3202	447	7%
Karnataka	562 (100%)	92592	165	10663	12%	16812	120	6544	47 (62%)	60%	4436	2762	20%
Kerala	330 (100%)	55326	168	3487	6%	5899	71	2635	32 (43%)	69%	1174	1381	27%
Lakshadweep	1 (100%)	15	23	1	7%	0		0			0	0	
Madhya Pradesh	659 (100%)	63363	96	11849	19%	18601	113	7250	44 (55%)	55%	5928	1661	11%
Maharashtra	1050 (100%)	149301	142	19091	13%	35212	134	13644	52 (65%)	57%	10411	5199	18%
Manipur	27 (100%)	3611	136	340	9%	1151	174	263	40 (53%)	39%	409	252	27%
Meghalaya	26 (100%)	2673	104	400	15%	1083	169	308	48 (64%)	52%	285	197	25%
Mizoram	10 (100%)	2017	204	221	11%	509	206	154	62 (83%)	53%	138	112	28%
Nagaland	24 (100%)	2646	109	277	10%	784	129	259	43 (57%)	56%	202	138	23%
Orissa	389 (100%)	42098	108	6552	16%	11123	114	5083	52 (61%)	63%	2996	1610	17%
Pondicherry	10 (100%)	3895	371	380	10%	391	149	165	63 (84%)	70%	72	72	23%
Punjab	261 (100%)	36728	141	4785	13%	8377	128	3197	49 (52%)	60%	2127	1553	23%
Rajasthan	624 (100%)	84982	136	18647	22%	28261	181	10777	69 (86%)	57%	7999	3365	15%
Sikkim	6 (100%)	2019	333	183	9%	384	254	118	78 (104%)	61%	74	101	34%
Tamil Nadu	648 (100%)	159380	246	13293	8%	23175	143	9247	57 (76%)	57%	6879	4311	21%
Tripura	24 (72%)	1891	78	220	12%	319	52	152	25 (33%)	64%	86	27	10%
Uttar Pradesh	1719 (94%)	187988	109	28912	15%	47640	114	19561	47 (49%)	54%	16408	4181	10%
Uttaranchal	91 (100%)	16327	179	2092	13%	3096	136	1274	56 (59%)	61%	827	354	14%
West Bengal	857 (100%)	137574	161	16549	12%	27459	128	12544	59 (78%)	65%	6757	3440	15%
Grand Total	10590 (95%)	1435861	136	199164	14%	333625	129	132397	51 (68%)	57%	98047	43526	16%

Values for grey areas are not expected

Estimated New Smear Positive cases / lakh population based on ARTI data for North Zone (Chandigarh, Delhi, Haryana, Himachal Pradesh, Jammu & Kashmir, Punjab, Uttar Pradesh, Uttaranchal) is 95; East Zone (Andaman & Nicobar, Arunachal Pradesh, Assam, Bihar, Jharkhand, Manipur, Meghalaya, Mizoram, Nagaland, Sikkim, Tripura, West Bengal) is 75; South Zone (Andhra Pradesh, Karnataka, Kerala, Lakshadweep, Pondicherry, Tamil Nadu) is 75 and West Zone (Chhattisgarh, Dadra & Nagar Haveli, Daman & Diu, Goa, Gujarat, Madhya Pradesh, Maharashtra, Rajasthan) is 80; Orissa is 85

1 Projected population based on census population of 2001 is used for calculation of case-detection rate. 1 lakh = 100,000 population

2 Smear positive patients diagnosed include new smear positive cases and smear positive retreatment cases

3 Total patients registered for treatment includes new sputum smear positive cases, new smear negative cases, new extra-pulmonary cases, smear positive retreatment cases and 'Others'

**Performance of RNTCP Case Detection (2005, third quarter), Smear Conversion (2005, second quarter),
and Treatment Outcomes (2004, third quarter)**

State	No of smear positive retreatment cases registered for treatment	% of retreatment cases out of all smear positive cases	No (%) of pediatric cases out of all New cases		3 month conversion rate of new smear positive patients ⁴	Cure rate of new smear positive patients ⁵	Success rate of new smear positive patients ⁵	% smear positive patients living in the district placed on DOTS	No (%) of patients put on Non DOTS treatment regimen		No (%) of Initial defaulters		No (%) of NSP cases started RNTCP DOTS within 7 days of diagnosis		No (%) of NSP cases registered within one month of starting RNTCP DOTS treatment		No (%) of interviewed NSP cases who received DOT during IP as per guidelines		No (%) of cured NSP cases having end of treatment follow-up sputum done within 7 days of last dose	
A&N Islands	13	25%	1	1%				81%	0	0%	12	19%	0	0%	0	0%	0	0%		
Andhra Pradesh	3657	25%	598	3%	88%	84%	87%	86%	88	1%	1638	11%	8397	80%	9987	92%	3290	66%	6460	66%
Arunachal Pradesh	80	25%	15	3%	96%	91%	91%	97%	9	3%	0	0%	237	94%	249	99%	212	84%	163	84%
Assam	924	21%	283	4%	85%	74%	79%	89%	56	1%	403	9%	2098	81%	2731	97%	1549	67%	1920	88%
Bihar	726	24%	370	5%	76%	84%	88%	89%	4	0%	310	10%	704	69%	765	78%	334	97%	173	83%
Chandigarh	80	29%	80	15%	88%	88%	89%	92%	2	1%	18	7%	162	83%	188	96%	31	86%	196	90%
Chhatisgarh	423	15%	237	4%	85%	81%	84%	92%	14	0%	236	8%	2112	85%	2468	99%	487	84%	1380	72%
D&N Haveli	7	17%	1	3%				90%	2	4%	3	6%	34	100%	34	100%	23	68%		
Daman & Diu	14	33%	5	10%				95%	0	0%	3	5%	29	100%	29	100%	29	100%		
Delhi	1724	34%	1266	14%	91%	87%	87%	84%	181	3%	637	12%	3706	94%	3926	100%	2822	79%	3301	86%
Goa	31	20%	29	9%	84%	88%	88%	78%	12	6%	28	15%	92	74%	125	100%	82	95%	13	100%
Gujarat	4332	36%	674	5%	90%	85%	86%	91%	214	2%	854	7%	6318	80%	7530	96%	2015	86%	5307	78%
Haryana	1885	35%	387	6%	85%	79%	83%	91%	52	1%	416	8%	1824	86%	2030	95%	579	82%	1360	87%
Himachal Pradesh	658	35%	63	2%	92%	89%	90%	90%	36	2%	143	8%	742	96%	737	95%	416	69%	588	86%
Jammu & Kashmir	113	20%	21	2%	90%	89%	89%	92%	29	5%	18	3%	168	100%	121	100%	121	100%	13	87%
Jharkhand	669	19%	251	4%	84%	87%	90%	91%	5	0%	321	9%	2222	83%	2617	98%	899	67%	1536	80%
Karnataka	2356	26%	866	6%	84%	81%	82%	92%	60	1%	681	7%	4956	82%	5675	90%	1180	66%	4242	82%
Kerala	555	17%	253	5%	86%	84%	87%	94%	33	1%	177	5%	2281	88%	2416	92%	348	71%	1845	78%
Lakshadweep	0		0					100%	0	0%	0	0%	0	0%	0	0%	0	0%		
Madhya Pradesh	3068	30%	515	3%	84%	78%	83%	89%	197	2%	922	8%	5366	80%	6214	92%	1967	66%	4083	55%
Maharashtra	4005	23%	1786	6%	90%	87%	87%	93%	161	1%	790	5%	10191	86%	11439	94%	2579	44%	9298	82%
Manipur	100	28%	99	11%	88%	87%	87%	98%	2	1%	5	2%	264	98%	238	93%	203	79%	300	86%
Meghalaya	157	34%	74	9%	83%	72%	77%	98%	4	1%	2	1%	344	92%	340	91%	248	75%	221	65%
Mizoram	68	30%	16	4%	96%	87%	87%	99%	1	0%	1	0%	NR	NR	NR	NR	NR	NR	NR	NR
Nagaland	130	33%	57	10%	89%	91%	92%	100%	1	0%	0	0%	NR	NR	NR	NR	NR	NR	NR	NR
Orissa	919	15%	362	4%	83%	73%	84%	86%	63	1%	760	13%	540	71%	975	87%	282	43%	742	73%
Pondicherry	72	30%	2	1%	86%	70%	75%	91%	5	2%	18	7%	NR	NR	NR	NR	NR	NR	NR	NR
Punjab	1233	28%	339	5%	89%	81%	85%	92%	111	3%	249	6%	2896	91%	3087	97%	537	92%	1471	89%
Rajasthan	5363	33%	1066	5%	90%	86%	88%	88%	181	1%	1954	11%	7903	73%	9718	90%	1726	84%	7674	80%
Sikkim	58	33%	57	19%	87%	93%	93%	91%	6	4%	8	5%	112	95%	118	100%	71	90%	136	96%
Tamil Nadu	2237	19%	2291	11%	90%	87%	88%	89%	85	1%	1163	11%	6743	80%	8241	95%	2807	62%	6783	81%
Tripura	33	18%	4	2%	82%	84%	91%	80%	8	4%	36	16%	NR	NR	NR	NR	NR	NR	NR	NR
Uttar Pradesh	6602	25%	1971	5%	89%	84%	87%	88%	87	0%	2747	10%	13645	86%	14979	94%	3814	57%	8335	84%
Uttaranchal	588	32%	140	6%	94%	86%	87%	97%	20	1%	41	2%	1334	95%	1347	96%	388	89%	900	95%
West Bengal	3094	20%	1298	6%	90%	86%	87%	92%	59	0%	1274	8%	9887	81%	11788	95%	1599	80%	8503	84%
Grand Total	45974	26%	15477	6%	88%	84%	86%	90%	1788	1%	15868	9%	95307	83%	110112	94%	30638	66%	76943	79%

NR indicate districts have not reported till 24th Nov 2005; Values for grey areas are not expected

Estimated New Smear Positive cases / lakh population based on ARTI data for North Zone (Chandigarh, Delhi, Haryana, Himachal Pradesh, Jammu & Kashmir, Punjab, Uttar Pradesh, Uttaranchal) is 95; East Zone (Andaman & Nicobar, Arunachal Pradesh, Assam, Bihar, Jharkhand, Manipur, Meghalaya, Mizoram, Nagaland, Sikkim, Tripura, West Bengal) is 75; South Zone (Andhra Pradesh, Karnataka, Kerala, Lakshadweep, Pondicherry, Tamil Nadu) is 75 and West Zone (Chhattisgarh, Dadra & Nagar Haveli, Daman & Diu, Goa, Gujarat, Madhya Pradesh, Maharashtra, Rajasthan) is 80; Orissa is 85

⁴ Smear conversion rate not expected for states that began implementing RNTCP during 3rd quarter 2005

⁵ Cure rate and success rate are not expected for states that began implementing RNTCP after 3rd quarter 2004

Treatment outcome of New cases for 3rd quarter 2004

Implementing states	New Smear Positive ¹							New Smear Negative ²						New Extra Pulmonary ²					
	Registered	Cure	Completed	Died	Failure	Defaulted	Trans out	Registered	Completed	Died	Failure	Defaulted	Trans out	Registered	Completed	Died	Failure	Defaulted	Trans out
A&N Islands																			
Andhra Pradesh	11342	83.9%	3.0%	5.0%	2.8%	5.1%	0.2%	9881	87.2%	4.7%	0.8%	7.1%	0.2%	2073	90.5%	2.5%	0.2%	6.7%	0.2%
Arunachal Pradesh	210	91.0%	0.5%	2.9%	2.4%	3.3%	0.0%	175	90.3%	2.9%	0.0%	5.7%	1.1%	86	91.9%	1.2%	1.2%	5.8%	0.0%
Assam	3512	74.1%	4.9%	5.4%	2.7%	12.0%	0.9%	3134	80.6%	4.2%	1.3%	12.9%	1.0%	569	84.2%	6.3%	0.4%	7.7%	1.4%
Bihar	1563	83.8%	3.8%	3.4%	1.1%	7.7%	0.1%	2401	89.8%	1.8%	0.5%	7.7%	0.0%	291	91.4%	2.4%	0.7%	5.5%	0.0%
Chandigarh	228	88.2%	0.4%	1.8%	4.8%	3.9%	0.9%	137	94.2%	2.2%	0.0%	2.9%	0.7%	171	94.2%	2.3%	0.0%	1.8%	1.8%
Chhatisgarh	2410	81.3%	3.1%	5.2%	2.1%	8.0%	0.2%	2670	85.2%	3.4%	0.8%	10.6%	0.1%	477	92.2%	1.7%	0.0%	5.2%	0.8%
D&N Haveli																			
Daman & Diu																			
Delhi	3047	86.7%	0.1%	2.5%	3.9%	5.3%	1.4%	2567	92.6%	1.5%	0.9%	4.6%	0.4%	2888	95.9%	0.8%	0.1%	2.8%	0.4%
Goa	16	87.5%	0.0%	0.0%	6.3%	6.3%	0.0%	10	70.0%	0.0%	0.0%	30.0%	0.0%	5	100.0%	0.0%	0.0%	0.0%	0.0%
Gujarat	7964	85.2%	0.7%	3.9%	2.7%	6.6%	1.0%	4664	84.5%	2.8%	1.2%	10.7%	0.6%	2124	89.1%	2.3%	0.4%	7.9%	0.3%
Haryana	3537	79.2%	4.3%	5.3%	4.4%	10.1%	1.3%	2014	85.3%	12.0%	1.8%	10.9%	1.7%	1204	92.9%	9.9%	0.3%	5.2%	1.2%
Himachal Pradesh	1269	88.7%	1.3%	3.7%	1.9%	4.5%	0.0%	753	87.5%	5.0%	0.7%	6.8%	0.0%	748	94.3%	1.3%	0.3%	4.1%	0.0%
Jammu & Kashmir	145	89.0%	0.0%	4.1%	0.7%	6.2%	0.0%	114	93.0%	3.5%	0.0%	3.5%	0.0%	54	87.0%	1.9%	0.0%	5.6%	5.6%
Jharkhand	2135	87.5%	2.7%	2.9%	1.1%	5.7%	0.1%	2330	92.7%	1.6%	0.1%	5.5%	0.0%	324	94.1%	0.3%	0.0%	5.6%	0.0%
Karnataka	6964	80.6%	1.5%	5.9%	2.6%	8.5%	0.8%	5219	84.3%	5.3%	1.0%	8.6%	0.8%	2601	90.3%	3.4%	0.2%	5.4%	0.4%
Kerala	2801	84.3%	2.3%	4.1%	3.9%	5.2%	0.2%	1485	87.5%	4.2%	0.7%	7.3%	0.3%	1413	91.9%	2.4%	0.3%	5.0%	0.4%
Lakshadweep																			
Madhya Pradesh	6506	78.4%	4.7%	4.6%	2.8%	9.3%	0.2%	6820	86.7%	2.6%	0.9%	9.6%	0.1%	1303	91.9%	1.7%	0.2%	6.1%	0.2%
Maharashtra	13863	86.5%	0.8%	5.0%	2.4%	4.7%	0.6%	11732	87.5%	4.0%	0.9%	7.2%	0.4%	5218	90.2%	2.9%	0.2%	6.1%	0.5%
Manipur	359	86.6%	0.0%	3.1%	2.8%	7.5%	0.0%	519	89.4%	1.7%	0.0%	8.7%	0.2%	252	88.5%	2.0%	0.0%	9.5%	0.0%
Meghalaya	208	71.6%	5.3%	6.7%	2.9%	13.5%	0.0%	167	83.8%	4.2%	0.6%	10.8%	0.6%	62	91.9%	0.0%	0.0%	8.1%	0.0%
Mizoram	150	86.7%	0.0%	4.0%	6.7%	2.7%	0.0%	193	87.0%	4.1%	1.0%	7.8%	0.0%	153	94.8%	2.0%	0.0%	2.6%	0.7%
Nagaland	210	91.4%	1.0%	1.9%	1.4%	3.8%	0.5%	106	85.8%	1.9%	0.0%	12.3%	0.0%	178	91.0%	1.1%	0.0%	7.3%	0.6%
Orissa	5025	72.6%	11.5%	5.3%	1.4%	9.2%	0.1%	3327	87.3%	4.4%	0.3%	7.9%	0.1%	1559	89.6%	2.1%	0.0%	7.5%	0.3%
Pondicherry	175	70.3%	5.1%	2.3%	0.0%	22.3%	0.0%	91	80.2%	4.4%	3.3%	11.0%	1.1%	56	91.1%	1.8%	0.0%	5.4%	1.8%
Punjab	2054	81.4%	4.1%	3.5%	2.3%	8.3%	0.5%	1580	88.2%	3.2%	0.5%	7.8%	0.3%	951	93.4%	2.1%	0.7%	3.6%	0.2%
Rajasthan	10901	86.1%	2.3%	2.6%	1.5%	7.3%	0.2%	8948	88.7%	2.3%	0.9%	8.1%	0.0%	2764	93.2%	1.0%	0.1%	5.7%	0.0%
Sikkim	152	92.8%	0.0%	2.6%	3.3%	1.3%	0.0%	123	90.2%	3.3%	3.3%	3.3%	0.0%	130	94.6%	2.3%	0.0%	0.8%	2.3%
Tamil Nadu	10081	86.8%	1.1%	4.7%	2.0%	5.1%	0.4%	8369	90.8%	3.9%	0.4%	4.7%	0.2%	3964	94.3%	2.4%	0.1%	2.8%	0.3%
Tripura	138	84.1%	7.2%	3.6%	2.9%	2.2%	0.0%	66	78.8%	15.2%	0.0%	6.1%	0.0%	19	94.7%	0.0%	0.0%	5.3%	0.0%
Uttar Pradesh	14838	83.9%	3.4%	3.6%	1.3%	7.7%	0.1%	15777	89.2%	2.0%	0.4%	8.4%	0.0%	3269	93.1%	1.0%	0.1%	6.9%	0.1%
Uttaranchal	1063	86.4%	1.1%	3.1%	3.7%	5.4%	0.4%	857	91.5%	2.5%	0.8%	4.9%	0.4%	265	95.1%	2.6%	0.4%	1.9%	0.0%
West Bengal	11867	86.4%	1.1%	3.9%	2.3%	6.1%	0.3%	7587	86.8%	4.2%	0.8%	7.9%	0.2%	3059	92.3%	2.7%	0.1%	4.8%	0.1%
Grand Total	124733	83.7%	2.6%	4.3%	2.3%	6.8%	0.4%	103816	87.7%	3.5%	0.8%	7.9%	0.3%	38230	92.1%	2.4%	0.2%	5.4%	0.3%

Values for grey areas are not expected

1 Treatment success for New Smear Positive is cured and treatment completed.

2 Treatment success for New Smear Negative and New Extra Pulmonary are treatment completed.

Outcome of Smear Positive Retreatment cases for India, 3rd quarter 2004 (excluding "Others")

Type of retreatment case	Cured	Success	Died	Failure	Defaulted	Transferred out	No. registered
Relapse	69.4%	74.8%	6.8%	4.8%	12.9%	0.7%	17361
Failure	56.7%	63.6%	6.9%	13.1%	16.2%	0.7%	4488
Treatment after default	62.5%	69.7%	7.2%	4.3%	18.2%	1.0%	19014
Total	64.8%	71.2%	7.0%	5.5%	15.7%	0.9%	40863

State-wise outcome of Smear Positive Retreatment cases for 3rd quarter 2004, (excluding "Others")

Implementing states	Cured	Success	Died	Failure	Defaulted	Transferred out	No. registered
A&N Islands							
Andhra Pradesh	60.3%	70.1%	8.9%	6.8%	13.7%	0.4%	3386
Arunachal Pradesh	87.6%	88.8%	3.4%	2.2%	5.6%	0.0%	89
Assam	55.6%	64.1%	9.4%	4.3%	19.1%	3.1%	972
Bihar	64.8%	75.8%	7.2%	3.7%	13.3%	0.0%	347
Chandigarh	82.7%	85.3%	0.0%	4.0%	10.7%	0.0%	75
Chhatisgarh	59.3%	68.0%	6.8%	5.1%	19.9%	0.0%	428
D&N Haveli							
Daman & Diu							
Delhi	71.4%	72.1%	4.8%	7.5%	13.9%	1.8%	1641
Goa	80.0%	80.0%	0.0%	0.0%	20.0%	0.0%	5
Gujarat	55.3%	61.8%	6.4%	6.3%	23.0%	2.5%	4341
Haryana	65.2%	73.7%	7.9%	7.2%	16.4%	1.6%	1688
Himachal Pradesh	71.1%	77.5%	7.0%	5.9%	9.6%	0.0%	613
Jammu & Kashmir	85.7%	85.7%	7.1%	0.0%	7.1%	0.0%	14
Jharkhand	80.9%	87.0%	8.6%	0.8%	6.4%	0.7%	608
Karnataka	56.1%	62.6%	9.0%	6.7%	20.8%	0.8%	2125
Kerala	61.3%	69.3%	6.5%	5.5%	18.3%	0.4%	476
Lakshadweep							
Madhya Pradesh	61.2%	69.1%	7.2%	6.9%	16.6%	0.2%	2410
Maharashtra	63.1%	67.8%	7.9%	6.1%	17.4%	0.9%	4025
Manipur	74.0%	76.6%	7.8%	3.9%	11.7%	0.0%	77
Meghalaya	61.0%	80.5%	2.4%	8.5%	8.5%	0.0%	82
Mizoram	72.1%	76.7%	2.3%	11.6%	9.3%	0.0%	43
Nagaland	78.6%	79.8%	2.4%	10.7%	6.0%	1.2%	84
Orissa	52.8%	72.0%	6.7%	4.2%	16.7%	0.4%	792
Pondicherry	47.8%	55.2%	6.0%	3.0%	34.3%	1.5%	67
Punjab	66.2%	76.7%	6.4%	4.5%	11.5%	1.0%	733
Rajasthan	74.3%	79.4%	5.4%	3.2%	11.8%	0.2%	5573
Sikkim	70.0%	70.0%	2.0%	22.0%	4.0%	2.0%	50
Tamil Nadu	63.9%	67.2%	9.1%	5.6%	16.6%	1.4%	2101
Tripura	62.2%	89.2%	5.4%	0.0%	5.4%	0.0%	37
Uttar Pradesh	69.9%	76.8%	5.7%	3.9%	13.5%	0.0%	4769
Uttaranchal	75.9%	78.2%	5.3%	6.4%	9.3%	0.9%	551
West Bengal	65.4%	68.6%	7.7%	6.8%	16.3%	0.6%	2661
Grand Total	64.8%	71.2%	7.0%	5.5%	15.7%	0.9%	40863

Values for grey areas are not expected

Programme infrastructure and Staffing for 3rd quarter 2005

Implementing states	Total no. of Districts / DTC	Implementing district details			Involvement of Other sectors			Number of key staff in position					
		No. of districts / DTC	No. of TUs'	No. of DMCs'	NGO	PP	Medical College	DTO	2nd MO	MO-TC	STS	STLS	LT
A&N Islands	2	2	3	13	0	2	0	1	1	3	3	3	13
Andhra Pradesh	24	24	164	859	119	42	15	20	16	155	162	155	799
Arunachal Pradesh	6	6	14	32	9	0	0	6	2	12	13	13	27
Assam	23	23	62	321	56	133	3	23	9	57	63	66	330
Bihar	38	19	91	415	34	80	6	18	17	82	86	70	289
Chandigarh	1	1	2	13	12	179	2	1	0	2	2	4	11
Chhatisgarh	16	16	62	286	30	118	2	16	0	55	57	61	276
D&N Haveli	1	1	1	5	0	0	0	1	0	0	1	1	5
Daman & Diu	2	2	2	3	0	2	0	2	0	1	2	2	2
Delhi	21	21	32	179	82	867	5	21	24	26	39	30	149
Goa	2	2	3	18	6	6	1	2	0	3	4	3	23
Gujarat	27	27	125	630	233	2200	11	24	14	120	123	123	575
Haryana	19	19	45	204	38	375	3	16	10	37	43	46	220
Himachal Pradesh	12	12	41	155	12	15	2	12	2	36	40	36	174
Jammu & Kashmir	14	14	29	113	5	9	2	10	8	27	32	35	129
Jharkhand	22	22	58	293	53	23	3	21	13	52	58	58	280
Karnataka	28	28	118	622	72	748	29	26	12	109	112	114	558
Kerala	14	14	67	507	75	417	10	12	13	61	62	68	522
Lakshadweep	1	1	1	9	0	0	0	1	0	1	1	0	9
Madhya Pradesh	45	45	146	723	35	203	6	43	9	130	134	165	671
Maharashtra	48	48	208	1082	174	2973	44	45	43	185	204	204	1135
Manipur	9	9	11	45	104	2	1	9	2	2	9	13	41
Meghalaya	7	7	9	45	15	8	0	6	6	10	9	9	47
Mizoram	8	8	9	27	1	0	0	8	1	5	9	9	28
Nagaland	8	8	8	31	9	12	0	8	1	8	8	8	31
Orissa	31	31	101	529	35	9	3	31	9	67	91	74	533
Pondicherry	1	1	4	11	1	4	5	1	0	4	5	4	11
Punjab	17	17	51	279	106	273	6	17	1	49	48	50	288
Rajasthan	32	32	145	715	109	240	6	32	19	142	142	140	705
Sikkim	4	4	5	19	9	16	1	4	0	5	5	5	18
Tamil Nadu	29	29	141	722	197	840	21	29	28	111	135	137	634
Tripura	4	2	5	33	0	0	0	2	0	4	5	5	29
Uttar Pradesh	70	63	313	1323	80	143	12	52	65	275	297	297	1140
Uttaranchal	13	13	30	145	16	4	2	13	9	27	30	30	133
West Bengal	19	19	178	866	100	318	9	19	11	173	178	176	918
Grand Total	618	590	2284	11272	1827	10261	210	552	345	2036	2212	2214	10753

Performance of RNTCP Case Detection (2005, third quarter), Smear Conversion (2005, second quarter), and Treatment Outcomes (2004, third quarter)

State	District	Population (in lakh) covered by RNTCP ¹	No. of suspects examined	Suspects examined per lakh population	No of Smear positive patients diagnosed ²	% of S+ve cases among suspects	Total patients registered for treatment ³	Annualized total case detection rate	New smear positive patients registered for treatment	Annualized new smear positive case detection rate (%)	% new sputum positive out of total new pulmonary cases	No of new smear negative cases registered for treatment	No of new EP cases registered for treatment	% of new EP cases out of all new cases
A&N Islands	Andamans	3	917	265	65	7%	113		39	(0%)	65%	21	40	40%
A&N Islands	Nicobars	0	0	0	0		0		0	(0%)		0	0	

Andhra Pradesh	Adilabad	26	2291	88	493	22%	643	98	342	52 (70%)	67%	167	26	5%
Andhra Pradesh	Anantapur	38	5544	145	845	15%	1256	131	561	59 (78%)	58%	401	98	9%
Andhra Pradesh	Bhadrachalam	8	1823	222	263	14%	474	231	218	106 (142%)	61%	141	32	8%
Andhra Pradesh	Chittoor	39	5689	145	640	11%	975	99	413	42 (56%)	64%	234	162	20%
Andhra Pradesh	Cuddapah	27	2894	107	465	16%	1016	150	330	49 (65%)	44%	419	63	8%
Andhra Pradesh	East Godavari	51	7374	144	959	13%	1838	143	669	52 (70%)	50%	666	251	16%
Andhra Pradesh	Guntur	46	8923	192	1201	13%	1889	163	774	67 (89%)	55%	641	88	6%
Andhra Pradesh	Hyderabad	39	7665	197	1221	16%	1507	155	560	58 (77%)	58%	410	331	25%
Andhra Pradesh	Karimnagar	37	2944	80	553	19%	775	85	309	34 (45%)	53%	279	30	5%
Andhra Pradesh	Khammam	19	2715	144	512	19%	821	175	397	84 (113%)	58%	286	35	5%
Andhra Pradesh	Krishna	44	5172	116	853	16%	1463	132	608	55 (73%)	56%	483	78	7%
Andhra Pradesh	Kurnool	37	4063	110	675	17%	1572	170	551	60 (79%)	42%	773	56	4%
Andhra Pradesh	Mahbubnagar	37	3647	99	620	17%	1119	121	548	59 (79%)	55%	446	32	3%
Andhra Pradesh	Medak	28	2389	85	361	15%	885	126	302	43 (57%)	45%	367	99	13%
Andhra Pradesh	Nalgonda	34	4637	136	680	15%	1143	134	470	55 (73%)	55%	391	33	4%
Andhra Pradesh	Nellore	28	3777	135	639	17%	925	132	389	56 (74%)	62%	234	67	10%
Andhra Pradesh	Nizamabad	25	2554	103	338	13%	668	108	242	39 (52%)	42%	336	40	6%
Andhra Pradesh	Prakasam	32	2927	91	479	16%	997	124	390	48 (65%)	49%	406	74	9%
Andhra Pradesh	Rangareddy	37	4961	134	788	16%	1147	124	544	59 (79%)	64%	303	103	11%
Andhra Pradesh	Srikakulam	27	3460	130	496	14%	921	138	421	63 (84%)	54%	357	80	9%
Andhra Pradesh	Visakhapatnam	40	4731	119	679	14%	1215	122	564	57 (75%)	60%	378	140	13%
Andhra Pradesh	Vizianagaram	24	6041	255	634	10%	1021	173	456	77 (103%)	64%	257	135	16%
Andhra Pradesh	Warangal	34	3152	93	711	23%	1280	150	556	65 (87%)	54%	472	28	3%
Andhra Pradesh	West Godavari	40	6593	165	849	13%	1502	150	572	57 (76%)	55%	469	122	10%

Arunachal Pradesh	Along DTC	1	102	90	15	15%	33	116	14	49 (66%)	78%	4	2	10%
Arunachal Pradesh	Bomdila DTC	2	428	234	63	15%	98	215	46	101 (134%)	73%	17	9	13%
Arunachal Pradesh	Deomali DTC	2	500	202	42	8%	101	163	31	50 (67%)	55%	25	20	26%
Arunachal Pradesh	Pasighat DTC	1	384	290	35	9%	83	251	35	106 (141%)	56%	28	5	7%
Arunachal Pradesh	Tezu DTC	2	435	197	63	14%	95	172	47	85 (114%)	70%	20	5	7%
Arunachal Pradesh	Ziro DTC	3	945	314	131	14%	214	284	63	84 (112%)	47%	72	27	17%

Assam	Barpeta	18	1252	71	151	12%	299	68	122	28 (37%)	54%	104	24	10%
Assam	Bongaigaon	10	942	97	145	15%	255	105	108	44 (59%)	59%	74	14	7%
Assam	Cachar	15	1523	99	235	15%	375	97	145	38 (50%)	52%	134	25	8%
Assam	Darrang	16	1548	96	200	13%	433	107	165	41 (55%)	49%	170	20	6%
Assam	Dhemaji	6	416	68	109	26%	152	100	85	56 (74%)	70%	37	6	5%
Assam	Dhubri	18	1435	82	297	21%	615	140	239	55 (73%)	46%	284	11	2%
Assam	Dibrugarh	13	1707	136	341	20%	550	175	221	70 (94%)	67%	111	138	29%
Assam	Goalpara	9	672	76	116	17%	210	95	93	42 (56%)	65%	50	12	8%
Assam	Golaghat	10	810	80	158	20%	274	108	119	47 (63%)	63%	70	31	14%
Assam	Hailakandi	6	758	130	90	12%	128	88	64	44 (59%)	63%	38	4	4%
Assam	Jorhat	11	1165	108	165	14%	302	112	105	39 (52%)	54%	89	44	18%
Assam	Kamrup	27	3488	129	599	17%	855	127	336	50 (66%)	60%	224	68	11%
Assam	Karbi Anglong	9	905	104	208	23%	409	188	141	65 (86%)	49%	146	34	11%
Assam	Karimganj	11	827	77	110	13%	261	97	81	30 (40%)	41%	117	17	8%
Assam	Kokrajhar	10	704	71	168	24%	326	131	155	62 (83%)	52%	145	5	2%

**Performance of RNTCP Case Detection (2005, third quarter), Smear Conversion (2005, second quarter),
and Treatment Outcomes (2004, third quarter)**

State	District	Population (in lakh) covered by RNTCP ¹	No. of suspects examined	Suspects examined per lakh population	No of Smear positive patients diagnosed ²	% of S+ve cases among suspects	Total patients registered for treatment ³	Annualized total case detection rate	New smear positive patients registered for treatment	Annualized new smear positive case detection rate (%)	% new sputum positive out of total new pulmonary cases	No of new smear negative cases registered for treatment	No of new EP cases registered for treatment	% of new EP cases out of all new cases
Assam	Lakhimpur	10	833	87	136	16%	278	117	104	44 (58%)	50%	106	32	13%
Assam	Marigaon	8	919	111	125	14%	256	123	96	46 (62%)	50%	96	6	3%
Assam	Nagaon	25	1915	77	347	18%	472	76	233	38 (50%)	59%	161	18	4%
Assam	Nalbari	12	933	77	175	19%	316	104	140	46 (61%)	58%	103	8	3%
Assam	North Cachar Hills	2	359	180	31	9%	65	130	18	36 (48%)	40%	27	3	6%
Assam	Sibsagar	11	646	57	138	21%	266	94	119	42 (56%)	73%	43	45	22%
Assam	Sonitpur	18	2080	116	431	21%	774	172	340	76 (101%)	56%	265	59	9%
Assam	Tinsukia	12	1555	126	269	17%	392	127	174	56 (75%)	69%	78	74	23%
Bihar	Araria	23	229	10	62	27%	83		23		43%	31	4	7%
Bihar	Arwal	7	270	40	36	13%	81	48	18	11 (14%)	32%	38	4	7%
Bihar	Aurangabad-BI	22	507	23	113	22%	135		49		50%	49	5	5%
Bihar	Begusarai	26	1241	48	119	10%	490	76	94	15 (19%)	23%	313	23	5%
Bihar	Bhagalpur	27	1718	64	172	10%	411	61	119	18 (24%)	35%	220	12	3%
Bihar	Bhojpur	25	266	11	39	15%	95		15		33%	31	29	39%
Bihar	Buxar	16	500	32	39	8%	169	44	31	8 (11%)	25%	93	7	5%
Bihar	Gaya	38	1574	41	244	16%	553	58	167	17 (23%)	39%	266	24	5%
Bihar	Jehanabad	10	520	52	80	15%	202	81	62	25 (33%)	36%	112	5	3%
Bihar	Katihar	26	1866	71	283	15%	466	71	228	35 (46%)	58%	165	13	3%
Bihar	Munger	13	844	67	84	10%	223	71	54	17 (23%)	30%	126	18	9%
Bihar	Muzaffarpur	41	1920	46	269	14%	971	94	231	22 (30%)	27%	628	45	5%
Bihar	Nalanda	26	299	11	50	17%	97		8		14%	48	5	8%
Bihar	Nawada	20	623	31	115	18%	158		45		46%	53	3	3%
Bihar	Patna	52	4203	81	581	14%	1298	100	411	32 (42%)	38%	664	96	8%
Bihar	Purbi Champaran	43	890	20	215	24%	337	31	158	15 (19%)	61%	99	5	2%
Bihar	Purnia	28	570	20	205	36%	578	82	136	19 (26%)	29%	333	13	3%
Bihar	Samastipur	38	2269	60	333	15%	841	89	216	23 (31%)	32%	461	19	3%
Bihar	Vaishali	30	1943	65	281	14%	784	105	174	23 (31%)	31%	391	62	10%
Chandigarh	Chandigarh	10	3295	319	397	12%	652	253	195	76 (80%)	54%	168	161	31%
Chhatisgarh	Bastar	14	1246	90	210	17%	366	105	158	45 (57%)	52%	148	20	6%
Chhatisgarh	Bilaspur-CG	21	2067	97	279	13%	525	99	214	40 (50%)	56%	168	82	18%
Chhatisgarh	Dantewada	8	803	104	169	21%	220	115	154	80 (100%)	78%	43	11	5%
Chhatisgarh	Dhamtari	8	1165	155	131	11%	189	101	109	58 (72%)	70%	46	19	11%
Chhatisgarh	Durg	30	3075	103	359	12%	818	109	294	39 (49%)	46%	339	150	19%
Chhatisgarh	Janjgir	14	899	64	149	17%	329	94	130	37 (46%)	45%	157	14	5%
Chhatisgarh	Jashpur	8	980	124	118	12%	182	92	101	51 (64%)	62%	63	4	2%
Chhatisgarh	Kanker	7	1111	160	167	15%	260	149	133	76 (96%)	60%	87	21	9%
Chhatisgarh	Kawardha	6	918	147	96	10%	160	102	76	49 (61%)	58%	55	11	8%
Chhatisgarh	Korba	11	1154	107	168	15%	236	87	129	48 (60%)	70%	55	27	13%
Chhatisgarh	Koriya	6	531	85	60	11%	138	88	47	30 (38%)	46%	55	14	12%
Chhatisgarh	Mahasamund	9	859	93	128	15%	271	118	114	50 (62%)	49%	120	17	7%
Chhatisgarh	Raigarh-CG	14	1146	85	186	16%	426	126	159	47 (59%)	43%	212	8	2%
Chhatisgarh	Raipur	32	3908	122	476	12%	857	107	339	42 (53%)	49%	352	83	11%
Chhatisgarh	Rajnandgaon	14	1372	100	211	15%	431	126	146	43 (53%)	51%	140	76	21%
Chhatisgarh	Surguja	21	1925	91	198	10%	434	82	185	35 (44%)	53%	162	28	7%
D&N Haveli	Dadra & Nagar Haveli	3	208	78	52	25%	46		34		89%	4	1	3%

Performance of RNTCP Case Detection (2005, third quarter), Smear Conversion (2005, second quarter), and Treatment Outcomes (2004, third quarter)

State	District	No of smear positive retreatment cases registered for treatment	% of retreatment cases out of all smear positive cases	No (%) of pediatric cases out of all New cases		3 month conversion rate of new smear positive patients ⁴	Cure rate of new smear positive patients ⁵	Success rate of new smear positive patients ⁵	% smear positive patients living in the district placed on DOTS	No (%) of patients put on Non-DOTS treatment regimen		No (%) of Initial defaulters		No (%) of NSP cases started RNTCP DOTS within 7 days of diagnosis		No (%) of NSP cases registered within one month of starting RNTCP DOTS treatment		No (%) of interviewed NSP cases who received DOT during IP as per guidelines		No (%) of cured NSP cases having end of treatment follow-up sputum done within 7 days of last dose	
				No	%					No	%	No	%	No	%	No	%	No	%	No	%
Assam	Lakhimpur	29	22%	6	2%	87%	78%	81%	95%	1	1%	0	0%	112	100%	112	100%	112	100%	97	78%
Assam	Marigaon	36	27%	4	2%	88%	81%	82%	99%	0	0%	1	1%	NR	NR	NR	NR	NR	NR	0	0%
Assam	Nagaon	49	17%	14	3%	95%	85%	85%	68%	0	0%	109	32%	164	70%	226	97%	90	39%	250	87%
Assam	Nalbari	40	22%	2	1%	82%	75%	80%	81%	0	0%	33	19%	110	89%	124	100%	28	88%	128	92%
Assam	North Cachar Hills	10	36%	7	15%	86%	81%	93%	90%	0	0%	3	10%	NR	NR	NR	NR	NR	NR	0	0%
Assam	Sibsagar	37	24%	16	8%	78%	66%	67%	90%	0	0%	14	10%	6	43%	101	85%	115	97%	119	100%
Assam	Sonitpur	76	18%	13	2%	86%	78%	83%	95%	1	0%	5	1%	395	93%	405	100%	405	100%	189	78%
Assam	Tinsukia	47	21%	17	5%	87%	69%	79%	82%	0	0%	48	18%	146	83%	173	99%	52	50%	77	75%
Bihar	Araria	22	49%	0	0%				98%	0	0%	1	2%	61	100%	61	100%	NR	NR		
Bihar	Arwal	18	50%	1	2%	46%			100%	0	0%	0	0%	NR	NR	NR	NR	NR	NR		
Bihar	Aurangabad-BI	25	34%	6	6%				68%	3	3%	30	28%	NR	NR	NR	NR	NR	NR		
Bihar	Begusarai	27	22%	21	5%	73%			99%	0	0%	1	1%	NR	NR	NR	NR	NR	NR		
Bihar	Bhagalpur	27	18%	27	8%	75%			85%	0	0%	14	8%	NR	NR	NR	NR	NR	NR		
Bihar	Bhojpur	3	17%	0	0%				49%	0	0%	20	51%	10	67%	15	100%	NR	NR		
Bihar	Buxar	22	42%	7	5%	100%			100%	0	0%	0	0%	NR	NR	NR	NR	NR	NR		
Bihar	Gaya	53	24%	11	2%	61%			89%	0	0%	26	11%	NR	NR	NR	NR	NR	NR		
Bihar	Jehanabad	20	24%	3	2%	69%			89%	0	0%	0	0%	NR	NR	NR	NR	NR	NR		
Bihar	Katihar	50	18%	34	8%	85%	80%	83%	94%	0	0%	16	6%	197	86%	197	100%	NR	NR	0	0%
Bihar	Munger	20	27%	10	5%	78%	68%	77%	89%	0	0%	13	16%	NR	NR	NR	NR	NR	NR	0	0%
Bihar	Muzaffarpur	33	13%	19	2%	88%	86%	91%	100%	0	0%	0	0%	65	25%	77	29%	125	100%	0	0%
Bihar	Nalanda	22	73%	1	2%				96%	0	0%	2	4%	9	39%	23	100%	NR	NR		
Bihar	Nawada	42	48%	5	5%				75%	0	0%	29	25%	NR	NR	NR	NR	NR	NR		
Bihar	Patna	71	15%	138	12%	76%	83%	87%	91%	1	0%	45	9%	NR	NR	NR	NR	NR	NR	0	0%
Bihar	Purbi Champaran	32	17%	1	0%	41%			78%	0	0%	48	22%	NR	NR	NR	NR	NR	NR		
Bihar	Purnia	47	26%	14	3%	88%			98%	0	0%	4	2%	186	89%	184	88%	199	95%	173	83%
Bihar	Samastipur	107	33%	36	5%	66%			83%	0	0%	49	17%	176	81%	208	96%	10	83%		
Bihar	Vaishali	85	33%	36	6%	94%	90%	92%	96%	0	0%	12	4%	NR	NR	NR	NR	NR	NR	0	0%
Chandigarh	Chandigarh	80	29%	80	15%	88%	88%	89%	92%	2	1%	18	7%	162	83%	188	96%	31	86%	196	90%
Chhatisgarh	Bastar	25	14%	8	2%	81%	74%	78%	88%	1	0%	24	12%	143	91%	158	100%	15	88%	108	74%
Chhatisgarh	Bilaspur-CG	48	18%	26	6%	89%	85%	85%	95%	0	0%	13	5%	183	86%	211	99%	57	83%	134	60%
Chhatisgarh	Dantewada	8	5%	3	1%	69%	45%	52%	96%	0	0%	7	4%	134	87%	151	98%	14	67%	0	0%
Chhatisgarh	Dhamtari	14	11%	5	3%	94%	89%	89%	97%	1	1%	3	2%	104	95%	109	100%	26	100%	63	89%
Chhatisgarh	Durg	35	11%	54	7%	93%	90%	92%	85%	3	1%	50	14%	245	83%	294	100%	63	84%	170	61%
Chhatisgarh	Janjgir	17	12%	6	2%	84%	74%	88%	98%	0	0%	3	2%	97	75%	119	92%	15	47%	62	52%
Chhatisgarh	Jashpur	7	6%	2	1%	72%	73%	89%	87%	0	0%	15	13%	96	95%	100	99%	3	100%	27	60%
Chhatisgarh	Kanker	19	13%	3	1%	88%	88%	89%	93%	2	1%	9	6%	110	83%	133	100%	13	93%	61	82%
Chhatisgarh	Kawardha	14	16%	8	6%	78%	71%	71%	88%	1	1%	10	11%	54	71%	76	100%	21	75%	43	80%
Chhatisgarh	Korba	25	16%	18	9%	77%	76%	85%	92%	0	0%	14	8%	112	87%	129	100%	NR	NR	80	91%
Chhatisgarh	Koriya	11	19%	6	5%	75%	81%	85%	95%	0	0%	3	5%	45	96%	47	100%	17	74%	29	74%
Chhatisgarh	Mahasamund	15	12%	10	4%	87%	83%	85%	95%	2	2%	4	3%	104	91%	114	100%	14	93%	69	81%
Chhatisgarh	Raigarh-CG	23	13%	5	1%	92%	81%	82%	98%	2	1%	2	1%	130	82%	159	100%	6	60%	119	67%
Chhatisgarh	Rajpur	65	16%	27	3%	90%	85%	86%	93%	1	0%	31	7%	291	86%	337	99%	85	100%	250	77%
Chhatisgarh	Rajnandgaon	58	28%	50	14%	87%	88%	88%	94%	0	0%	13	7%	123	84%	146	100%	118	89%	120	84%
Chhatisgarh	Surguja	39	17%	6	2%	83%	85%	85%	82%	1	1%	35	18%	141	76%	185	100%	20	63%	45	88%
D&N Haveli	Dadra & Nagar Haveli	7	17%	1	3%				90%	2	4%	3	6%	34	100%	34	100%	23	68%		

Performance of RNTCP Case Detection (2005, third quarter), Smear Conversion (2005, second quarter), and Treatment Outcomes (2004, third quarter)

State	District	Population (in lakh) covered by RNTCP ¹	No. of suspects examined	Suspects examined per lakh population	No of Smear positive patients diagnosed ²	% of S+ve cases among suspects	Total patients registered for treatment ³	Annualized total case detection rate	New smear positive patients registered for treatment	Annualized new smear positive case detection rate (%)	% new sputum positive out of total new pulmonary cases	No of new smear negative cases registered for treatment	No of new EP cases registered for treatment	% of new EP cases out of all new cases
Daman & Diu	Daman	1	981	723	65	7%	53		22		67%	11	7	18%
Daman & Diu	Diu	1	79	150	10	13%	14		7		78%	2	1	10%

Delhi	BJRM Chest Clinic	4	1055	243	166	16%	256	236	93	86 (90%)	67%	45	59	30%
Delhi	DDU Chest Clinic	15	2323	153	420	18%	1131	298	314	83 (87%)	56%	248	316	36%
Delhi	GTB Chest Clinic	5	2354	434	389	17%	422	311	108	80 (84%)	61%	70	130	42%
Delhi	Gulabi Bagh	12	2170	182	248	11%	423	142	111	37 (39%)	57%	83	114	37%
Delhi	Hedgewar C Clinic	4	1718	396	271	16%	636	587	163	150 (158%)	56%	127	200	41%
Delhi	Jhandewalan	5	1113	205	172	15%	368	271	99	73 (77%)	57%	74	78	31%
Delhi	Karawal Nagar	7	1237	190	338	27%	811	499	283	174 (183%)	66%	146	224	34%
Delhi	Kingsway Camp	5	1785	329	258	14%	341	252	116	86 (90%)	59%	80	81	29%
Delhi	LN Chest Clinic	3	996	306	167	17%	132	162	46	57 (60%)	75%	15	48	44%
Delhi	LRS	15	2403	158	648	27%	1223	322	371	98 (103%)	62%	228	348	37%
Delhi	Moti Nagar	5	1401	258	196	14%	317	234	78	58 (61%)	54%	67	108	43%
Delhi	Narela	7	1387	213	207	15%	311	191	98	60 (63%)	63%	57	85	35%
Delhi	NDMC	5	1988	367	276	14%	212	156	59	44 (46%)	69%	26	65	43%
Delhi	NDC	2	643	296	59	9%	185	341	33	61 (64%)	45%	41	53	42%
Delhi	Nehru Nagar	15	2949	194	482	16%	996	262	298	79 (83%)	62%	184	279	37%
Delhi	Patparganj	7	2105	324	420	20%	711	437	212	130 (137%)	63%	123	215	39%
Delhi	R K Mission	7	1506	231	272	18%	412	253	146	90 (94%)	63%	85	98	30%
Delhi	RTRM Chest Clinic	11	1471	136	235	16%	401	148	138	51 (54%)	60%	92	81	26%
Delhi	SGM Chest Clinic	14	3809	270	642	17%	1352	384	374	106 (112%)	58%	274	393	38%
Delhi	Shahdra	5	2081	384	338	16%	644	475	158	117 (123%)	56%	125	220	44%
Delhi	SPM Marg	5	1102	203	213	19%	400	295	103	76 (80%)	54%	87	102	35%

Goa	North Goa	8	1671	209	127	8%	216	108	80	40 (50%)	53%	72	32	17%
Goa	South Goa	6	751	121	91	12%	158	102	45	29 (36%)	46%	53	27	22%

Gujarat	Ahmadabad	25	2743	110	559	20%	784	126	325	52 (65%)	67%	157	101	17%
Gujarat	Ahmadabad Mun. Corp.	38	7220	189	1277	18%	2072	217	554	58 (73%)	64%	310	422	33%
Gujarat	Amreli	15	1973	131	217	11%	359	95	158	42 (52%)	75%	54	44	17%
Gujarat	Anand	20	3056	152	586	19%	772	153	318	63 (79%)	69%	146	66	12%
Gujarat	Banaskantha	27	3252	120	673	21%	1039	153	342	50 (63%)	57%	257	87	13%
Gujarat	Bharuch	20	2784	136	521	19%	713	140	388	76 (95%)	76%	122	56	10%
Gujarat	Bhavnagar	27	3644	136	766	21%	914	137	299	45 (56%)	63%	177	130	21%
Gujarat	Chhotaudepur	10	1260	128	230	18%	313	127	157	64 (80%)	88%	22	22	11%
Gujarat	Dahod	18	4065	229	668	16%	823	186	382	86 (108%)	78%	107	38	7%
Gujarat	Gandhinagar	14	1824	126	358	20%	417	115	207	57 (72%)	82%	46	57	18%
Gujarat	Jamnagar	21	2789	134	367	13%	549	106	218	42 (53%)	72%	86	96	24%
Gujarat	Junagadh	32	5101	158	616	12%	984	122	398	49 (61%)	65%	215	86	12%
Gujarat	Kachchh	17	1776	107	326	18%	368	89	168	41 (51%)	84%	33	33	14%
Gujarat	Kheda	22	2318	106	629	27%	681	124	310	57 (71%)	76%	100	38	8%
Gujarat	Mahesana	20	3419	172	472	14%	667	134	303	61 (76%)	64%	167	67	12%
Gujarat	Panchmahals	22	3276	149	924	28%	1212	221	585	107 (133%)	76%	183	39	5%
Gujarat	Patan	13	2205	172	370	17%	461	144	187	58 (73%)	60%	123	15	5%
Gujarat	Rajkot	34	5332	156	691	13%	917	107	422	49 (62%)	76%	134	141	20%
Gujarat	Sabarkantha	23	3668	162	723	20%	957	169	388	69 (86%)	68%	180	96	14%
Gujarat	Surat	16	2780	169	464	17%	540	132	239	58 (73%)	73%	89	82	20%
Gujarat	Surat Mun. Corp.	26	4603	174	557	12%	1023	155	338	51 (64%)	64%	187	200	28%
Gujarat	Surendranagar	16	2126	129	400	19%	432	105	184	45 (56%)	70%	79	52	17%

Performance of RNTCP Case Detection (2005, third quarter), Smear Conversion (2005, second quarter), and Treatment Outcomes (2004, third quarter)

State	District	Population (in lakh) covered by RNTCP ¹	No. of suspects examined	Suspects examined per lakh population	No of Smear positive patients diagnosed ²	% of S+ve cases among suspects	Total patients registered for treatment ³	Annualized total case detection rate	New smear positive patients registered for treatment	Annualized new smear positive case detection rate (%)	% new sputum positive out of total new pulmonary cases	No of new smear negative cases registered for treatment	No of new EP cases registered for treatment	% of new EP cases out of all new cases
Gujarat	The Dangs	2	403	199	36	9%	61	121	31	61 (77%)	69%	14	2	4%
Gujarat	Vadodara	15	1968	127	402	20%	459	119	211	55 (68%)	74%	73	31	10%
Gujarat	Vadodara Corpn.	14	1826	129	430	24%	457	129	209	59 (74%)	75%	68	56	17%
Gujarat	Valsad	29	3590	125	520	14%	783	109	332	46 (58%)	65%	175	99	16%
Gujarat	Vyara(Surat)	11	1414	124	299	21%	400	141	200	70 (88%)	65%	107	20	6%
Haryana	Ambala	11	2352	210	238	10%	292	104	102	36 (38%)	63%	61	66	29%
Haryana	Bhiwani	16	2419	154	478	20%	726	185	269	68 (72%)	55%	222	61	11%
Haryana	Faridabad	24	3275	135	515	16%	1135	188	362	60 (63%)	52%	333	231	25%
Haryana	Fatehabad	9	1045	117	229	22%	285	128	131	59 (62%)	70%	55	30	14%
Haryana	Gurgaon	18	3387	185	618	18%	751	164	304	66 (70%)	81%	71	109	23%
Haryana	Hisar	17	2163	128	496	23%	646	152	245	58 (61%)	69%	108	89	20%
Haryana	Jhajjar	10	1248	127	171	14%	374	153	145	59 (62%)	61%	93	67	22%
Haryana	Jind	13	2021	154	340	17%	472	144	199	61 (64%)	74%	70	69	20%
Haryana	Kaithal	10	959	92	207	22%	370	142	153	59 (62%)	67%	76	39	15%
Haryana	Karnal	14	2125	151	393	18%	529	150	228	65 (68%)	71%	94	77	19%
Haryana	Kurukshetra	9	1528	167	164	11%	281	123	91	40 (42%)	55%	74	48	23%
Haryana	Mahendragarh	9	1476	165	184	12%	343	153	125	56 (59%)	65%	68	51	21%
Haryana	Panchkula	5	1001	193	151	15%	260	201	87	67 (71%)	65%	47	69	34%
Haryana	Panipat	11	1610	151	253	16%	495	185	166	62 (65%)	57%	126	68	19%
Haryana	Rewari	8	885	105	159	18%	241	114	89	42 (44%)	68%	42	38	22%
Haryana	Rohtak	10	3826	369	481	13%	487	188	169	65 (69%)	64%	95	123	32%
Haryana	Sirsa	12	1459	119	334	23%	466	152	213	69 (73%)	79%	57	53	16%
Haryana	Sonipat	14	1826	129	293	16%	720	204	208	59 (62%)	43%	272	107	18%
Haryana	Yamunanagar	11	1290	119	198	15%	400	148	157	58 (61%)	56%	122	63	18%
Himachal Pradesh	Bilaspur-HP	4	872	240	116	13%	164	180	72	79 (83%)	75%	24	22	19%
Himachal Pradesh	Chamba	5	777	158	125	16%	285	232	83	68 (71%)	59%	57	83	37%
Himachal Pradesh	Hamirpur-HP	4	1176	268	130	11%	219	199	91	83 (87%)	65%	49	45	24%
Himachal Pradesh	Kangra	14	2457	172	434	18%	701	196	244	68 (72%)	62%	150	175	31%
Himachal Pradesh	Kinnaur	1	233	260	29	12%	45	201	17	76 (80%)	81%	4	9	30%
Himachal Pradesh	Kullu	4	1712	422	178	10%	412	407	110	109 (114%)	49%	114	103	31%
Himachal Pradesh	Lahul & Spiti	0	207	584	10	5%	21	237	8	90 (95%)	73%	3	3	21%
Himachal Pradesh	Mandi	10	2429	253	292	12%	532	221	188	78 (82%)	62%	116	94	24%
Himachal Pradesh	Shimla	8	2347	305	248	11%	471	245	142	74 (78%)	63%	84	157	41%
Himachal Pradesh	Sirmaur	5	1194	244	161	13%	293	240	89	73 (77%)	65%	48	78	36%
Himachal Pradesh	Solan	5	2217	416	264	12%	272	204	121	91 (96%)	75%	40	46	22%
Himachal Pradesh	Una	5	782	164	120	15%	189	158	79	66 (70%)	71%	33	28	20%
Jammu & Kashmir	Anantanag	13	679	52	38	6%	0		38		90%	4	9	18%
Jammu & Kashmir	Badgam	7	722	110	43	6%	0	0	33	20 (21%)	87%	5	38	50%
Jammu & Kashmir	Baramula	13	1407	109	95	7%	200	62	86	27 (28%)	83%	18	61	37%
Jammu & Kashmir	Doda	8	44	6	13	30%	10		5		71%	2	0	0%
Jammu & Kashmir	Jammu	17	1617	93	266	16%	502	115	170	39 (41%)	49%	177	99	22%
Jammu & Kashmir	Kargil	1	0	0	0		0		0			0	0	
Jammu & Kashmir	Kathua	6	0	0	0		0		0			0	0	
Jammu & Kashmir	Kupwara	7	732	103	55	0	124	70	43	24 (26%)	(65%)	23	42	39%
Jammu & Kashmir	Leh(Ladakh)	1	143	110	15	0	0		13		(54%)	11	25	51%
Jammu & Kashmir	Poonch	4	81	20	3	0	13		1		(14%)	6	3	30%
Jammu & Kashmir	Pulwama	7	646	92	47	0	123	70	55	31 (33%)	(63%)	33	32	27%

Performance of RNTCP Case Detection (2005, third quarter), Smear Conversion (2005, second quarter), and Treatment Outcomes (2004, third quarter)

State	District	No of smear retreatment cases registered for treatment	% of retreatment cases out of all smear positive cases	No (%) of pediatric cases out of all New cases		3 month conversion rate of new smear positive patients ⁴	Cure rate of new smear positive patients ⁵	Success rate of new smear positive patients ⁵	% smear positive patients living in the district placed on DOTS	No (%) of patients put on Non-DOTS treatment regimen		No (%) of Initial defaulters		No (%) of NSP cases started RNTCP DOTS within 7 days of diagnosis		No (%) of NSP cases registered within one month of starting RNTCP DOTS treatment		No (%) of interviewed NSP cases who received DOT during IP as per guidelines		No (%) of cured NSP cases having end of treatment follow-up sputum done within 7 days of last dose	
				1	2					1	2	1	2	1	2	1	2	1	2	1	2
Gujarat	The Dangs	5	14%	1	2%	100%	92%	92%	94%	0	0%	2	6%	27	87%	31	100%	20	100%	23	70%
Gujarat	Vadodara	107	34%	3	1%	92%	86%	86%	90%	3	1%	23	9%	180	85%	209	99%	144	76%	192	92%
Gujarat	Vadodara Corpn.	98	32%	3	1%	90%	85%	85%	93%	2	1%	16	6%	172	82%	205	98%	151	90%	168	92%
Gujarat	Valsad	128	28%	71	12%	90%	84%	84%	88%	13	3%	44	9%	282	85%	326	98%	35	81%	274	78%
Gujarat	Vyara(Surat)	59	23%	12	4%	85%	86%	88%	87%	13	4%	24	8%	144	72%	196	98%	28	93%	99	56%
Haryana	Ambala	48	32%	8	3%	85%	82%	82%	80%	0	0%	37	20%	84	80%	89	85%	15	88%	109	94%
Haryana	Bhiwani	171	39%	33	6%	75%	81%	85%	97%	1	0%	14	3%	209	78%	269	91%	210	78%	2	0%
Haryana	Faridabad	157	30%	71	8%	88%	85%	85%	94%	0	0%	30	6%	357	95%	363	99%	91	74%	227	84%
Haryana	Fatehabad	64	33%	10	5%	87%	79%	84%	87%	2	1%	26	12%	NR	NR	NR	NR	NR	NR	0	0%
Haryana	Gurgaon	220	42%	39	8%	83%	74%	75%	92%	3	1%	45	8%	239	79%	292	96%	33	92%	231	99%
Haryana	Hisar	200	45%	18	4%	82%	75%	75%	88%	4	1%	47	11%	NR	NR	NR	NR	NR	NR	0	0%
Haryana	Jhajjar	62	30%	4	1%	91%	84%	86%	93%	5	3%	6	4%	136	94%	141	97%	9	69%	130	95%
Haryana	Jind	118	37%	16	5%	86%	82%	83%	86%	14	4%	34	10%	177	89%	191	96%	54	96%	180	84%
Haryana	Kaithal	91	37%	16	6%	77%	66%	69%	86%	0	0%	29	14%	NR	NR	NR	NR	NR	NR	0	0%
Haryana	Karnal	118	34%	20	5%	86%	85%	85%	93%	0	0%	27	7%	NR	NR	NR	NR	NR	NR	0	0%
Haryana	Kurukshetra	50	35%	9	4%	87%	80%	81%	81%	8	6%	17	13%	79	88%	90	100%	52	87%	101	80%
Haryana	Mahendragarh	72	37%	19	8%	95%	72%	76%	97%	1	1%	5	3%	115	92%	112	90%	10	100%	83	81%
Haryana	Panchkula	36	29%	17	8%	90%	83%	83%	97%	0	0%	4	3%	83	95%	84	97%	84	97%	70	95%
Haryana	Panipat	79	32%	20	6%	85%			95%	0	0%	13	5%	126	76%	159	96%	15	75%	108	71%
Haryana	Rewari	54	38%	8	5%	79%	75%	81%	83%	0	0%	26	17%	75	84%	86	97%	NR	NR	0	0%
Haryana	Rohtak	84	33%	25	6%	96%	90%	90%	100%	0	0%	0	0%	NR	NR	NR	NR	NR	NR	0	0%
Haryana	Sirsa	104	33%	16	5%	87%	77%	79%	93%	12	4%	10	3%	NR	NR	NR	NR	NR	NR	0	0%
Haryana	Sonipat	109	34%	33	6%	85%			87%	0	0%	37	13%	NR	NR	NR	NR	NR	NR	0	0%
Haryana	Yamunanagar	48	23%	5	1%	78%	71%	71%	94%	2	1%	9	5%	144	89%	154	97%	6	55%	121	84%
Himachal Pradesh	Bilaspur-HP	45	38%	0	0%	94%	93%	96%	NR	NR	NR	NR	NR	NR	NR	NR	NR	NR	NR	0	0%
Himachal Pradesh	Chamba	57	41%	10	4%	91%	88%	93%	99%	1	1%	0	0%	NR	NR	NR	NR	NR	NR	0	0%
Himachal Pradesh	Hamirpur-HP	29	24%	1	1%	92%	88%	88%	94%	0	0%	7	6%	127	98%	130	100%	110	85%	115	88%
Himachal Pradesh	Kangra	107	30%	16	3%	94%	90%	90%	83%	2	1%	65	16%	324	98%	314	95%	175	53%	210	97%
Himachal Pradesh	Kinnaur	12	41%	1	3%	75%	91%	91%	76%	3	10%	4	14%	NR	NR	NR	NR	NR	NR	0	0%
Himachal Pradesh	Kullu	66	38%	13	4%	89%	92%	94%	93%	5	3%	6	4%	NR	NR	NR	NR	NR	NR	0	0%
Himachal Pradesh	Lahul & Spiti	4	33%	0	0%	91%	100%	100%	100%	0	0%	0	0%	NR	NR	NR	NR	NR	NR	0	0%
Himachal Pradesh	Mandi	107	36%	5	1%	95%	87%	88%	87%	6	2%	30	11%	NR	NR	NR	NR	NR	NR	0	0%
Himachal Pradesh	Shimla	66	32%	4	1%	96%	91%	91%	95%	4	2%	5	3%	NR	NR	NR	NR	NR	NR	0	0%
Himachal Pradesh	Sirmaur	69	44%	6	3%	90%	83%	86%	95%	4	3%	4	3%	86	97%	71	80%	NR	NR	66	67%
Himachal Pradesh	Solan	55	31%	6	3%	89%	88%	88%	89%	9	5%	10	6%	111	92%	121	100%	86	100%	111	76%
Himachal Pradesh	Una	41	34%	1	1%	90%	88%	88%	89%	0	0%	12	11%	94	93%	101	100%	45	87%	86	91%
Jammu & Kashmir	Anantanag	0	0%	0	0%				100%	0	0%	0	0%	NR	NR	NR	NR	NR	NR		
Jammu & Kashmir	Badgam	5	13%	3	4%	93%			100%	0	0%	0	0%	NR	NR	NR	NR	NR	NR		
Jammu & Kashmir	Baramula	26	23%	4	2%	87%			98%	0	0%	2	2%	NR	NR	NR	NR	NR	NR		
Jammu & Kashmir	Doda	3	38%	1	14%				67%	0	0%	0	0%	NR	NR	NR	NR	NR	NR		
Jammu & Kashmir	Jammu	52	23%	5	1%	86%	89%	89%	85%	25	10%	15	6%	NR	NR	NR	NR	NR	NR	0	0%
Jammu & Kashmir	Kargil	0		0					NR	NR	NR	NR	NR	NR	NR	NR	NR	NR	NR		
Jammu & Kashmir	Kathua	0		0					NR	NR	NR	NR	NR	NR	NR	NR	NR	NR	NR		
Jammu & Kashmir	Kupwara	11	20%	2	2%	93%			100%	0	0%	0	0%	55	100%	55	100%	55	100%		
Jammu & Kashmir	Leh(Ladakh)	0	0%	0	0%				92%	1	8%	0	0%	NR	NR	NR	NR	NR	NR		
Jammu & Kashmir	Poonch	3	75%	0	0%				100%	0	0%	0	0%	NR	NR	NR	NR	NR	NR		
Jammu & Kashmir	Pulwama	1	2%	1	1%	93%	86%	86%	96%	2	4%	0	0%	47	100%	NR	NR	NR	NR	6	86%

Performance of RNTCP Case Detection (2005, third quarter), Smear Conversion (2005, second quarter), and Treatment Outcomes (2004, third quarter)

State	District	Population (in lakh) covered by RNTCP ¹	No. of suspects examined	Suspects examined per lakh population	No of Smear positive patients diagnosed ²	% of S+ve cases among suspects	Total patients registered for treatment ³	Annualized total case detection rate	New smear positive patients registered for treatment	Annualized new smear positive case detection rate (%)	% new sputum positive out of total new pulmonary cases	No of new smear negative cases registered for treatment	No of new EP cases registered for treatment	% of new EP cases out of all new cases
Jammu & Kashmir	Rajouri	5	0	0	0		0		0			0	0	
Jammu & Kashmir	Srinagar	14	1476	108	110	0	204	59	66	19 (20%)	(55%)	54	65	35%
Jammu & Kashmir	Udhampur	8	0	0	0		0		0			0	0	

Jharkhand	Bokaro	19	1533	79	218	0	444	92	175	36 (48%)	(45%)	216	27	6%
Jharkhand	Chatra	9	517	60	105	0	224	104	87	40 (54%)	(48%)	96	2	1%
Jharkhand	Deoghar	13	1114	88	164	0	275	87	121	38 (51%)	(55%)	99	9	4%
Jharkhand	Dhanbad	26	1840	71	244	0	577	89	176	27 (36%)	(39%)	280	17	4%
Jharkhand	Dumka	12	869	73	180	0	252	84	117	39 (52%)	(57%)	87	0	0%
Jharkhand	Garhwa	11	977	87	124	0	327	116	88	31 (42%)	(34%)	171	17	6%
Jharkhand	Giridih	21	1061	51	195	0	293		133		(58%)	97	13	5%
Jharkhand	Godda	11	972	85	171	0	167		128		(79%)	34	2	1%
Jharkhand	Gumla	9	603	67	69	0	227	101	63	28 (37%)	(34%)	123	4	2%
Jharkhand	Hazaribagh	25	1774	72	238	0	508	82	170	27 (37%)	(40%)	258	25	6%
Jharkhand	Jamtara	7	734	104	140	0	248	140	108	61 (81%)	(57%)	82	5	3%
Jharkhand	Kodarma	5	123	23	6	0	70	52	4	3 (4%)	(10%)	35	2	5%
Jharkhand	Lathehar	6	615	97	98	0	212	134	85	54 (72%)	(51%)	83	26	13%
Jharkhand	Lohardaga	4	412	104	53	0	104	105	38	38 (51%)	(55%)	31	13	16%
Jharkhand	Pakaur	8	822	108	144	0	194	102	87	46 (61%)	(58%)	64	3	2%
Jharkhand	Palamu	16	2023	123	266	0	660	161	218	53 (71%)	(40%)	327	70	11%
Jharkhand	Pashchimi Singhbhum	14	921	65	185	0	393	111	135	38 (51%)	(41%)	194	14	4%
Jharkhand	Purbi Singhbhum	22	1673	78	403	0	673	125	307	57 (76%)	(59%)	216	60	10%
Jharkhand	Ranchi	30	3151	104	403	0	909	120	304	40 (54%)	(44%)	391	124	15%
Jharkhand	Sahibganj	10	1361	135	184	0	325	129	102	40 (54%)	(41%)	149	10	4%
Jharkhand	Saraikela-Kharsawan	8	709	84	106	0	266	126	103	49 (65%)	(45%)	127	2	1%
Jharkhand	Simdega	6	310	55	55	0	102	72	48	34 (45%)	(53%)	42	2	2%

Karnataka	Bagalkot	18	2611	148	230	0	504	114	192	44 (58%)	(51%)	184	61	14%
Karnataka	Bangalore City	44	9435	212	1413	0	1724	155	525	47 (63%)	(60%)	344	446	34%
Karnataka	Bangalore Rural	20	3602	180	288	0	598	120	267	53 (71%)	(68%)	127	120	23%
Karnataka	Bangalore Urban	25	2145	86	208	0	736	118	225	36 (48%)	(58%)	166	199	34%
Karnataka	Belgaum	45	6053	135	618	0	1125	100	468	42 (56%)	(60%)	313	196	20%
Karnataka	Bellary	22	3870	179	701	0	797	148	350	65 (86%)	(59%)	239	104	15%
Karnataka	Bidar	16	1725	108	231	0	376	94	158	39 (53%)	(67%)	79	31	12%
Karnataka	Bijapur	19	2514	130	314	0	571	118	202	42 (56%)	(49%)	213	46	10%
Karnataka	Chamarajanagar	10	1983	193	175	0	356	139	158	62 (82%)	(74%)	56	65	23%
Karnataka	Chikmagalur	12	2453	202	198	0	353	116	137	45 (60%)	(66%)	72	87	29%
Karnataka	Chitradurga	16	2715	169	333	0	577	143	311	77 (103%)	(65%)	171	53	10%
Karnataka	Dakshina Kannada	20	3813	189	405	0	594	118	244	48 (64%)	(70%)	105	102	23%
Karnataka	Davanagere	19	2365	124	375	0	581	122	201	42 (56%)	(52%)	188	94	19%
Karnataka	Dharwad	17	2929	171	361	0	532	125	185	43 (58%)	(61%)	116	122	29%
Karnataka	Gadag	10	1488	144	266	0	106	41	33	13 (17%)	(60%)	22	15	21%
Karnataka	Gulbarga	33	4120	124	652	0	936	112	352	42 (56%)	(54%)	304	61	9%
Karnataka	Hassan	18	4389	239	290	0	475	104	228	50 (66%)	(73%)	84	89	22%
Karnataka	Haveri	15	2274	148	197	0	289	75	102	27 (36%)	(53%)	90	42	18%
Karnataka	Kodagu	6	1515	261	67	0	126	87	51	35 (47%)	(60%)	34	21	20%
Karnataka	Kolar	27	4633	172	567	0	885	132	381	57 (76%)	(60%)	254	145	19%
Karnataka	Koppal	13	1708	134	273	0	489	154	171	54 (72%)	(52%)	157	50	13%
Karnataka	Mandya	19	4292	229	352	0	643	137	275	59 (78%)	(64%)	156	112	21%
Karnataka	Mysore	28	6390	228	634	0	858	123	335	48 (64%)	(62%)	206	152	22%

**Performance of RNTCP Case Detection (2005, third quarter), Smear Conversion (2005, second quarter),
and Treatment Outcomes (2004, third quarter)**

State	District	Population (in lakh) covered by RNTCP ¹	No. of suspects examined	Suspects examined per lakh population	No of Smear positive patients diagnosed ²	% of S+ve cases among suspects	Total patients registered for treatment ³	Annualized total case detection rate	New smear positive patients registered for treatment	Annualized new smear positive case detection rate (%)	% new sputum positive out of total new pulmonary cases	No of new smear negative cases registered for treatment	No of new EP cases registered for treatment	% of new EP cases out of all new cases
Karnataka	Raichur	18	2697	154	487	0	800	182	336	77 (102%)	(56%)	263	40	6%
Karnataka	Shimoga	17	3554	203	213	0	446	102	135	31 (41%)	(38%)	218	57	14%
Karnataka	Tumkur	27	3625	132	473	0	758	110	304	44 (59%)	(72%)	120	170	29%
Karnataka	Udupi	12	2599	220	211	0	302	102	121	41 (55%)	(68%)	57	48	21%
Karnataka	Uttara Kannada	14	1095	76	131	0	275	76	97	27 (36%)	(50%)	98	34	15%
Kerala	Alappuzha	22	4006	184	232	0	411	75	175	32 (43%)	(63%)	101	84	23%
Kerala	Ernakulam	32	5115	159	363	0	615	77	284	35 (47%)	(68%)	132	109	21%
Kerala	Idukki	12	1828	156	70	0	165	56	68	23 (31%)	(65%)	36	45	30%
Kerala	Kannur	25	4644	186	298	0	471	75	198	32 (42%)	(74%)	71	152	36%
Kerala	Kasaragod	12	1525	122	118	0	205	66	86	28 (37%)	(74%)	31	57	33%
Kerala	Kollam	27	4030	150	285	0	547	82	259	39 (52%)	(65%)	138	98	20%
Kerala	Kottayam	20	5796	286	303	0	457	90	225	44 (59%)	(74%)	79	101	25%
Kerala	Kozhikode	30	5147	172	337	0	611	82	248	33 (44%)	(65%)	132	162	30%
Kerala	Malappuram	38	4323	115	260	0	541	58	211	22 (30%)	(62%)	131	131	28%
Kerala	Palakkad	27	3218	119	280	0	473	70	217	32 (43%)	(73%)	79	122	29%
Kerala	Pathanamthitta	13	1613	126	116	0	191	60	99	31 (41%)	(85%)	18	57	33%
Kerala	Thiruvananthapuram	34	7547	225	384	0	589	70	255	30 (41%)	(66%)	129	122	24%
Kerala	Thrissur	31	5141	167	363	0	491	64	251	33 (43%)	(80%)	61	116	27%
Kerala	Wayanad	8	1393	171	78	0	132	65	59	29 (39%)	(62%)	36	25	21%
Lakshadweep	Lakshadweep	1	15	23	1	0	0		0			0	0	
Madhya Pradesh	Balaghat	16	1025	65	177	0	324	82	130	33 (41%)	55%	106	33	12%
Madhya Pradesh	Barwani	12	1479	125	179	0	226	77	120	41 (51%)	68%	56	17	9%
Madhya Pradesh	Betul	15	796	52	127	0	237	62	102	27 (34%)	53%	91	16	8%
Madhya Pradesh	Bhind	16	1490	96	250	0	581	149	137	35 (44%)	32%	292	31	7%
Madhya Pradesh	Bhopal	20	3316	165	726	0	796	159	227	45 (57%)	40%	337	100	15%
Madhya Pradesh	Chhatarpur	16	1993	124	221	0	467	116	149	37 (46%)	44%	192	8	2%
Madhya Pradesh	Chhindwara	20	1894	94	340	0	398	79	200	40 (50%)	77%	59	58	18%
Madhya Pradesh	Damoh	12	1326	112	327	0	513	174	214	73 (91%)	61%	137	52	13%
Madhya Pradesh	Datia	7	809	118	187	0	267	156	123	72 (90%)	65%	67	22	10%
Madhya Pradesh	Dewas	14	1155	81	169	0	353	99	105	29 (37%)	43%	141	37	13%
Madhya Pradesh	Dhar	19	1902	100	320	0	563	119	232	49 (61%)	56%	186	56	12%
Madhya Pradesh	Dindori	6	412	65	51	0	75	47	38	24 (30%)	79%	10	12	20%
Madhya Pradesh	Guna	18	1708	94	381	0	529	116	217	48 (60%)	58%	155	42	10%
Madhya Pradesh	Gwalior	18	2579	145	603	0	620	139	236	53 (66%)	63%	136	47	11%
Madhya Pradesh	Harda	5	467	90	75	0	81	63	30	23 (29%)	55%	25	15	21%
Madhya Pradesh	Hoshangabad	12	1781	150	232	0	388	131	154	52 (65%)	58%	113	46	15%
Madhya Pradesh	Indore	28	2980	106	468	0	767	109	252	36 (45%)	64%	144	180	31%
Madhya Pradesh	Jabalpur	24	2127	90	540	0	617	104	302	51 (64%)	73%	109	63	13%
Madhya Pradesh	Jhabua	15	2013	132	226	0	440	115	226	59 (74%)	64%	126	24	6%
Madhya Pradesh	Katni	12	863	74	235	0	366	126	170	59 (73%)	55%	139	15	5%
Madhya Pradesh	Khandwa	19	1755	94	275	0	507	109	196	42 (53%)	49%	205	53	12%
Madhya Pradesh	Khargone	17	1988	119	261	0	513	123	188	45 (56%)	50%	187	68	15%
Madhya Pradesh	Mandla	10	833	85	175	0	270	111	132	54 (68%)	69%	59	37	16%
Madhya Pradesh	Mandsaur	13	1188	92	246	0	464	144	187	58 (72%)	55%	156	47	12%
Madhya Pradesh	Morena	17	1491	86	437	0	606	140	246	57 (71%)	65%	132	13	3%
Madhya Pradesh	Narsinghpur	10	647	62	168	0	272	104	107	41 (51%)	68%	51	27	15%
Madhya Pradesh	Neemuch	8	1158	146	138	0	289	146	94	48 (59%)	50%	95	31	14%

Performance of RNTCP Case Detection (2005, third quarter), Smear Conversion (2005, second quarter), and Treatment Outcomes (2004, third quarter)

State	District	No of smear positive retreatment cases registered for treatment	% of retreatment cases out of all smear positive cases	No (%) of pediatric cases out of all New cases		3 month conversion rate of new smear positive patients ⁴	Cure rate of new smear positive patients ⁵	Success rate of new smear positive patients ⁵	% smear positive patients living in the district placed on DOTS	No (%) of patients put on Non-DOTS treatment regimen		No (%) of Initial defaulters		No (%) of NSP cases started RNTCP DOTS within 7 days of diagnosis		No (%) of NSP cases registered within one month of starting RNTCP DOTS treatment		No (%) of interviewed NSP cases who received DOT during IP as per guidelines		No (%) of cured NSP cases having end of treatment follow-up sputum done within 7 days of last dose	
				No	%					No	%	No	%	No	%	No	%	No	%	No	%
Karnataka	Raichur	136	29%	30	5%	87%	86%	86%	92%	0	0%	38	8%	255	76%	336	100%	29	83%	213	78%
Karnataka	Shimoga	34	20%	26	6%	92%	84%	84%	93%	0	0%	14	7%	113	84%	133	99%	20	100%	0	0%
Karnataka	Tumkur	126	29%	51	9%	84%	85%	86%	93%	4	1%	24	6%	280	91%	298	96%	40	89%	197	76%
Karnataka	Udupi	57	32%	18	8%	84%	88%	89%	95%	0	0%	9	5%	116	96%	120	99%	35	100%	117	99%
Karnataka	Uttara Kannada	34	26%	2	1%		70%	71%	93%	0	0%	9	7%	88	91%	96	99%	30	75%	78	95%
Kerala	Alappuzha	39	18%	29	8%	88%	87%	93%	99%	3	1%	0	0%	125	85%	163	93%	30	61%	121	69%
Kerala	Ernakulam	66	19%	10	2%	81%	87%	89%	96%	0	0%	14	4%	244	86%	270	95%	34	89%	209	84%
Kerala	Idukki	10	13%	3	2%	86%	87%	89%	94%	0	0%	4	6%	62	91%	60	91%	13	87%	26	40%
Kerala	Kannur	35	15%	11	3%	92%	83%	84%	84%	5	2%	39	14%	172	87%	195	98%	21	95%	148	82%
Kerala	Kasaragod	29	25%	7	4%	91%	81%	82%	92%	0	0%	9	8%	76	88%	84	98%	18	47%	80	86%
Kerala	Kollam	43	14%	26	5%	91%	85%	86%	96%	0	0%	10	4%	202	78%	182	71%	92	65%	165	68%
Kerala	Kottayam	44	16%	7	2%	83%	77%	81%	94%	3	1%	12	4%	209	94%	204	92%	7	78%	128	76%
Kerala	Kozhikode	49	16%	43	8%	87%	84%	87%	90%	2	1%	29	10%	222	90%	244	98%	8	80%	153	78%
Kerala	Malappuram	54	20%	23	5%	87%	82%	87%	94%	4	2%	12	5%	179	85%	197	93%	15	79%	142	81%
Kerala	Palakkad	49	18%	1	0%	88%	84%	85%	97%	4	1%	4	1%	197	91%	212	98%	19	63%	178	84%
Kerala	Pathanamthitta	16	14%	8	5%	93%	90%	90%	94%	1	1%	6	5%	91	92%	99	100%	14	88%	78	70%
Kerala	Thiruvananthapuram	64	20%	45	9%	79%	82%	84%	95%	3	1%	14	4%	223	87%	230	90%	24	52%	145	85%
Kerala	Thrissur	48	16%	12	3%	85%	85%	86%	92%	8	2%	17	5%	224	89%	221	88%	45	96%	229	83%
Kerala	Wayanad	9	13%	28	23%	82%	94%	94%	90%	0	0%	7	10%	55	93%	55	93%	8	100%	43	66%
Lakshadweep	Lakshadweep	0		0					100%	0	0%	0	0%	NR	NR	NR	NR	NR	NR		
Madhya Pradesh	Balaghat	30	19%	1	0%	77%	74%	86%	79%	0	0%	1	1%	84	65%	127	98%	6	60%	64	42%
Madhya Pradesh	Barwani	31	21%	4	2%	88%	75%	84%	96%	1	1%	5	3%	114	95%	119	99%	26	76%	51	73%
Madhya Pradesh	Betul	28	22%	0	0%	56%			86%	2	2%	16	13%	151	83%	172	95%	6	60%		
Madhya Pradesh	Bhind	116	46%	15	3%	67%			94%	0	0%	14	6%	NR	NR	NR	NR	NR	NR		
Madhya Pradesh	Bhopal	78	26%	41	6%	92%	89%	89%	69%	59	13%	75	17%	209	92%	13	7%	36	90%	261	96%
Madhya Pradesh	Chhatarpur	96	39%	16	5%	82%	82%	86%	91%	0	0%	17	9%	46	31%	136	91%	36	24%	114	77%
Madhya Pradesh	Chhindwara	79	28%	19	6%	82%	74%	76%	92%	1	0%	23	7%	150	75%	112	56%	56	77%	81	64%
Madhya Pradesh	Damoh	93	30%	2	0%	85%	82%	86%	86%	16	5%	28	9%	206	96%	210	98%	24	80%	202	91%
Madhya Pradesh	Datia	53	30%	14	7%	84%	78%	78%	95%	4	2%	5	3%	101	82%	111	90%	87	71%	62	61%
Madhya Pradesh	Dewas	45	30%	15	5%	88%	84%	86%	93%	7	4%	4	3%	89	85%	105	100%	6	60%	82	66%
Madhya Pradesh	Dhar	78	25%	4	1%	93%	86%	90%	99%	3	1%	0	0%	NR	NR	NR	NR	NR	NR	0	0%
Madhya Pradesh	Dindori	13	25%	1	2%	62%	35%	91%	100%	0	0%	0	0%	29	76%	38	100%	7	18%	13	30%
Madhya Pradesh	Guna	101	32%	6	1%	82%	75%	83%	92%	12	3%	17	5%	156	72%	217	100%	36	63%	173	7%
Madhya Pradesh	Gwalior	190	45%	30	7%	87%	72%	73%	82%	30	6%	61	12%	168	71%	224	95%	175	93%	146	59%
Madhya Pradesh	Harda	6	17%	4	6%	77%	83%	83%	96%	0	0%	3	4%	49	92%	53	100%	NR	NR	33	100%
Madhya Pradesh	Hoshangabad	67	30%	13	4%	95%	91%	92%	98%	2	1%	3	1%	138	90%	154	100%	85	94%	134	100%
Madhya Pradesh	Indore	144	36%	30	5%	87%	79%	80%	98%	7	2%	0	0%	690	90%	769	100%	18	90%	600	99%
Madhya Pradesh	Jabalpur	127	30%	28	6%	81%	57%	69%	74%	12	2%	119	24%	228	75%	277	92%	52	73%	186	90%
Madhya Pradesh	Jhabua	60	21%	0	0%	97%	90%	94%	100%	0	0%	0	0%	NR	NR	NR	NR	NR	NR	NR	NR
Madhya Pradesh	Katni	41	19%	12	4%	71%	72%	80%	97%	0	0%	6	3%	150	88%	170	100%	30	60%	43	43%
Madhya Pradesh	Khandwa	46	19%	13	3%	93%	88%	88%	91%	2	1%	21	8%	170	87%	190	97%	44	85%	134	86%
Madhya Pradesh	Khargone	67	26%	20	5%	89%	85%	85%	100%	0	0%	1	0%	174	93%	183	97%	164	87%	169	85%
Madhya Pradesh	Mandia	38	22%	10	4%	84%	75%	84%	96%	4	2%	3	2%	79	60%	125	95%	90	68%	92	75%
Madhya Pradesh	Mandsaur	56	23%	6	2%	86%	82%	92%	98%	2	1%	2	1%	20	48%	88	78%	113	100%	113	81%
Madhya Pradesh	Morena	188	43%	7	2%	69%			79%	6	1%	85	20%	167	68%	243	99%	124	82%		
Madhya Pradesh	Narsinghpur	67	39%	7	4%	81%	78%	81%	96%	1	1%	6	4%	71	66%	103	96%	10	11%	68	76%
Madhya Pradesh	Neemuch	48	34%	9	4%	89%	87%	88%	97%	1	1%	3	2%	82	87%	93	99%	12	24%	70	74%

Performance of RNTCP Case Detection (2005, third quarter), Smear Conversion (2005, second quarter), and Treatment Outcomes (2004, third quarter)

State	District	Population (in lakh) covered by RNTCP ¹	No. of suspects examined	Suspects examined per lakh population	No of Smear positive patients diagnosed ²	% of S+ve cases among suspects	Total patients registered for treatment ³	Annualized total case detection rate	New smear positive patients registered for treatment	Annualized new smear positive case detection rate (%)	% new sputum positive out of total new pulmonary cases	No of new smear negative cases registered for treatment	No of new EP cases registered for treatment	% of new EP cases out of all new cases
Madhya Pradesh	Panna	9	459	49	131	0	183	79	51	22 (27%)	51%	49	8	7%
Madhya Pradesh	Raisen	12	855	70	150	0	352	115	104	34 (43%)	39%	163	15	5%
Madhya Pradesh	Rajgarh	14	1179	86	231	0	456	133	173	51 (63%)	56%	137	38	11%
Madhya Pradesh	Ratlam	13	1137	86	241	0	406	123	123	37 (46%)	51%	116	54	18%
Madhya Pradesh	Rewa	22	1297	60	262	0	437	81	176	33 (41%)	56%	138	42	12%
Madhya Pradesh	Sagar	22	2142	97	333	0	581	105	213	39 (48%)	48%	231	44	9%
Madhya Pradesh	Satna	20	1490	73	322	0	593	116	210	41 (52%)	46%	247	48	10%
Madhya Pradesh	Sehore	12	905	77	123	0	296	101	95	32 (40%)	44%	123	32	13%
Madhya Pradesh	Seoni	13	872	69	203	0	279	88	133	42 (52%)	78%	38	35	17%
Madhya Pradesh	Shahdol	17	962	56	203	0	288	67	151	35 (44%)	66%	79	11	5%
Madhya Pradesh	Shajapur	14	2354	167	279	0	379	108	163	46 (58%)	68%	76	29	11%
Madhya Pradesh	Sheopur	6	1175	192	232	0	265	174	107	70 (88%)	54%	91	1	1%
Madhya Pradesh	Shivpuri	16	1238	79	253	0	490	125	212	54 (67%)	48%	229	8	2%
Madhya Pradesh	Sidhi	20	1161	58	332	0	427	86	190	38 (48%)	64%	106	23	7%
Madhya Pradesh	Tikamgarh	13	911	69	206	0	341	104	171	52 (65%)	62%	107	18	6%
Madhya Pradesh	Ujjain	19	2075	111	497	0	541	116	233	50 (62%)	62%	143	52	12%
Madhya Pradesh	Umaria	6	250	44	59	0	93	66	39	28 (35%)	58%	28	5	7%
Madhya Pradesh	Vidisha	13	1726	130	258	0	665	201	192	58 (72%)	37%	321	48	9%

Maharashtra	Ahmadnagar	44	6078	137	624	0	1170	106	550	50 (62%)	63%	323	136	13%
Maharashtra	Akola	18	2143	121	281	0	472	107	217	49 (61%)	60%	147	45	11%
Maharashtra	Amravati Mun. Corp.	6	1357	228	158	0	213	143	76	51 (64%)	63%	45	40	25%
Maharashtra	Amravati Rural	22	3569	160	334	0	665	119	237	42 (53%)	57%	182	102	20%
Maharashtra	Aurangabad Mun. Corp.	9	1523	161	208	0	288	122	98	41 (52%)	68%	46	77	35%
Maharashtra	Aurangabad-MH	22	2528	114	389	0	646	116	302	54 (68%)	58%	217	64	11%
Maharashtra	Bhandara	12	2031	165	234	0	385	125	169	55 (69%)	59%	117	27	9%
Maharashtra	Bid	23	3174	135	331	0	550	94	268	46 (57%)	64%	149	65	13%
Maharashtra	Buldana	24	4612	191	595	0	806	133	320	53 (66%)	54%	273	63	10%
Maharashtra	Chandrapur	23	2786	124	330	0	731	130	293	52 (65%)	55%	237	77	13%
Maharashtra	Dhule	19	3130	169	368	0	715	154	233	50 (63%)	48%	253	106	18%
Maharashtra	Gadchiroli	11	1367	130	183	0	308	117	161	61 (77%)	72%	64	39	15%
Maharashtra	Gondiya	13	2298	177	253	0	442	136	182	56 (70%)	65%	100	75	21%
Maharashtra	Hingoli	11	1031	96	159	0	331	124	107	40 (50%)	42%	146	26	9%
Maharashtra	Jalgaon	40	6326	158	708	0	1317	132	581	58 (73%)	56%	460	156	13%
Maharashtra	Jalna	17	2353	135	337	0	607	139	225	51 (64%)	53%	199	60	12%
Maharashtra	Kalyan Dombivli MC	13	1055	82	200	0	373	115	126	39 (49%)	57%	94	74	25%
Maharashtra	Kolhapur	33	3512	107	402	0	747	91	348	42 (53%)	62%	211	85	13%
Maharashtra	Kolhapur Mun. Corp.	5	570	108	45	0	158	120	52	40 (49%)	53%	47	28	22%
Maharashtra	Latur	23	3234	143	320	0	620	110	288	51 (64%)	56%	227	47	8%
Maharashtra	Mumbai	129	17068	132	3073	0	5930	184	1976	61 (76%)	56%	1555	1111	24%
Maharashtra	Nagpur Mun. Corp.	22	3772	170	648	0	855	154	311	56 (70%)	69%	142	259	36%
Maharashtra	Nagpur Rural	22	2085	96	218	0	617	114	309	57 (71%)	62%	190	38	7%
Maharashtra	Nanded	26	3803	144	475	0	907	137	300	45 (57%)	46%	357	98	13%
Maharashtra	Nanded Waghela MC	5	511	109	79	0	198	170	64	55 (69%)	52%	59	48	28%
Maharashtra	Nandurbar	14	2403	169	277	0	502	141	197	55 (69%)	50%	194	52	12%
Maharashtra	Nashik	42	7107	168	759	0	1630	154	601	57 (71%)	49%	635	254	17%
Maharashtra	Nashik Corpn.	12	1275	109	191	0	333	114	127	43 (54%)	60%	83	86	29%
Maharashtra	Navi Mumbai	8	1816	238	286	0	323	169	116	61 (76%)	67%	57	75	30%
Maharashtra	Osmanabad	16	2539	159	220	0	381	95	184	46 (58%)	60%	124	31	9%
Maharashtra	Parbhani	16	1738	107	234	0	487	120	170	42 (53%)	46%	203	43	10%

Performance of RNTCP Case Detection (2005, third quarter), Smear Conversion (2005, second quarter), and Treatment Outcomes (2004, third quarter)

State	District	No of smear positive retreatment cases registered for treatment		% of retreatment cases out of all smear positive cases	No (%) of pediatric cases out of all New cases		3 month conversion rate of new smear positive patients ⁴	Cure rate of new smear positive patients ⁵	Success rate of new smear positive patients ⁵	% smear positive patients living in the district placed on DOTS	No (%) of patients put on Non-DOTS treatment regimen		No (%) of Initial defaulters		No (%) of NSP cases started RNTCP DOTS within 7 days of diagnosis		No (%) of NSP cases registered within one month of starting RNTCP DOTS treatment		No (%) of interviewed NSP cases who received DOT during IP as per guidelines		No (%) of cured NSP cases having end of treatment follow-up sputum done within 7 days of last dose	
		No	%		No	%					No	%	No	%	No	%	No	%	No	%	No	%
Madhya Pradesh	Panna	65	56%	1	1%	86%	72%	79%	85%	3	2%	16	12%	37	73%	46	90%	27	73%	40	95%	
Madhya Pradesh	Raisen	38	27%	1	0%	91%	86%	87%	96%	2	1%	4	3%	NR	NR	NR	NR	NR	NR	0	0%	
Madhya Pradesh	Rajgarh	52	23%	5	1%	89%	82%	84%	92%	0	0%	18	8%	NR	NR	NR	NR	NR	NR	0	0%	
Madhya Pradesh	Ratlam	64	34%	11	4%	81%	73%	78%	89%	0	0%	24	11%	NR	NR	NR	NR	NR	NR	0	0%	
Madhya Pradesh	Rewa	73	29%	12	3%	88%			84%	0	0%	41	16%	137	78%	168	95%	25	63%			
Madhya Pradesh	Sagar	88	29%	43	9%	90%	75%	81%	88%	3	1%	35	11%	172	83%	204	98%	137	71%	157	70%	
Madhya Pradesh	Satna	54	20%	5	1%	79%	74%	85%	92%	0	0%	23	8%	158	75%	168	80%	8	57%	115	74%	
Madhya Pradesh	Sehore	23	19%	8	3%	86%	81%	85%	97%	0	0%	4	3%	87	92%	95	100%	31	76%	74	88%	
Madhya Pradesh	Seoni	68	34%	9	4%	83%	78%	78%	85%	1	1%	26	14%	83	61%	101	75%	20	80%	26	70%	
Madhya Pradesh	Shahdol	32	17%	1	0%	83%	75%	78%	92%	4	2%	11	6%	139	86%	159	98%	15	9%	100	60%	
Madhya Pradesh	Shajapur	86	35%	2	1%	98%	91%	92%	92%	0	0%	4	1%	195	92%	160	98%	142	87%	111	93%	
Madhya Pradesh	Sheopur	63	37%	5	3%	63%			70%	12	5%	57	25%	6	55%	65	61%	34	79%			
Madhya Pradesh	Shivpuri	32	13%	1	0%	66%	67%	72%	97%	0	0%	7	3%	211	100%	212	100%	206	97%	128	96%	
Madhya Pradesh	Sidhi	106	36%	9	3%	80%			85%	0	0%	51	15%	101	53%	188	99%	15	75%			
Madhya Pradesh	Tikamgarh	43	20%	5	2%	82%	79%	83%	83%	0	0%	34	17%	128	75%	169	99%	32	73%	82	54%	
Madhya Pradesh	Ujjain	109	32%	15	4%	90%	83%	86%	89%	0	0%	41	11%	193	83%	232	100%	16	89%	148	82%	
Madhya Pradesh	Umaria	20	34%	2	3%	88%	63%	66%	86%	0	0%	8	14%	33	85%	36	92%	NR	NR	17	71%	
Madhya Pradesh	Vidisha	66	26%	53	9%	88%	87%	90%	100%	0	0%	0	0%	165	86%	179	93%	16	8%	194	83%	
Maharashtra	Ahmadnagar	93	14%	33	3%	91%	88%	88%	99%	0	0%	6	1%	NR	NR	NR	NR	NR	NR	0	0%	
Maharashtra	Akola	52	19%	16	4%	92%	85%	91%	99%	3	1%	0	0%	190	88%	216	100%	33	20%	195	89%	
Maharashtra	Amravati Mun. Corp.	37	33%	8	5%	89%	86%	88%	90%	5	4%	7	6%	70	92%	73	96%	74	97%	55	79%	
Maharashtra	Amravati Rural	88	27%	17	3%	88%	86%	89%	97%	2	1%	8	3%	157	66%	233	98%	134	57%	174	83%	
Maharashtra	Aurangabad Mun. Corp.	49	33%	12	5%	89%	86%	90%	NR	NR	NR	NR	87	89%	11	11%	12	12%	95	100%		
Maharashtra	Aurangabad-MH	55	15%	14	2%	93%	94%	94%	99%	0	0%	3	1%	274	91%	302	100%	94	48%	209	100%	
Maharashtra	Bhandara	58	26%	27	9%	93%	85%	85%	86%	2	1%	3	1%	143	85%	169	100%	48	98%	144	96%	
Maharashtra	Bid	57	18%	19	4%	92%	87%	87%	100%	0	0%	2	1%	246	92%	268	100%	255	95%	233	87%	
Maharashtra	Buldana	126	28%	23	4%	91%	88%	89%	97%	0	0%	15	3%	220	100%	238	74%	55	100%	192	74%	
Maharashtra	Chandrapur	69	19%	24	4%	92%	87%	88%	94%	0	0%	18	6%	244	83%	287	98%	17	85%	223	82%	
Maharashtra	Dhule	91	28%	34	6%	90%	83%	85%	98%	1	0%	6	2%	189	81%	216	93%	219	94%	119	56%	
Maharashtra	Gadchiroli	24	13%	7	3%	93%	87%	89%	100%	0	0%	0	0%	136	84%	161	100%	NR	NR	84	84%	
Maharashtra	Gondiya	57	24%	21	6%	89%	86%	86%	95%	3	1%	9	4%	165	91%	182	100%	26	96%	116	70%	
Maharashtra	Hingoli	31	22%	11	4%	83%	81%	89%	91%	0	0%	14	9%	78	73%	82	77%	29	66%	79	71%	
Maharashtra	Jalgaon	110	16%	52	4%	91%	87%	87%	76%	7	1%	145	23%	NR	NR	NR	NR	NR	NR	0	0%	
Maharashtra	Jalna	99	31%	6	1%	84%	79%	85%	99%	2	1%	0	0%	214	95%	218	97%	195	87%	140	79%	
Maharashtra	Kalyan Dombivli MC	54	30%	5	2%	83%	83%	83%	85%	1	1%	27	15%	105	83%	126	100%	4	80%	139	87%	
Maharashtra	Kolhapur	68	16%	21	3%	90%	87%	88%	98%	0	0%	6	2%	311	89%	348	100%	10	71%	313	88%	
Maharashtra	Kolhapur Mun. Corp.	21	29%	6	5%	91%	80%	80%	100%	0	0%	0	0%	48	92%	45	100%	6	40%	46	96%	
Maharashtra	Latur	48	14%	9	2%	90%	87%	87%	100%	0	0%	0	0%	NR	NR	NR	NR	NR	NR	0	0%	
Maharashtra	Mumbai	785	28%	472	10%	90%	86%	86%	92%	22	1%	201	7%	1593	81%	1855	94%			1464	86%	
Maharashtra	Nagpur Mun. Corp.	106	25%	31	4%	94%	87%	87%	93%	19	4%	16	3%	284	91%	311	100%	21	84%	254	83%	
Maharashtra	Nagpur Rural	64	17%	3	1%	95%	88%	88%	100%	0	0%	1	0%	273	88%	309	100%	39	91%	225	85%	
Maharashtra	Nanded	114	28%	47	6%	95%	90%	90%	97%	0	0%	14	3%	220	73%	275	92%	79	93%	190	60%	
Maharashtra	Nanded Waghela MC	16	20%	6	4%	92%	86%	86%	99%	0	0%	1	1%	58	91%	61	95%	20	80%	47	87%	
Maharashtra	Nandurbar	51	21%	9	2%	91%	85%	88%	93%	2	1%	17	6%	43	65%	159	81%	166	84%	135	71%	
Maharashtra	Nashik	106	15%	297	20%	93%	89%	89%	98%	0	0%	13	2%	538	90%	601	100%	81	92%	403	77%	
Maharashtra	Nashik Corpn.	31	20%	36	12%	88%	82%	82%	82%	6	4%	23	14%	120	94%	120	100%	13	93%	76	95%	
Maharashtra	Navi Mumbai	42	27%	51	21%	82%	85%	86%	81%	14	8%	20	11%	101	87%	116	100%	38	100%	107	96%	
Maharashtra	Osmanabad	34	16%	13	4%	95%	90%	90%	97%	0	0%	7	3%	150	82%	184	100%	62	85%	110	73%	
Maharashtra	Parbhani	65	28%	14	3%	87%	85%	86%	100%	0	0%	1	0%	157	92%	170	100%	43	90%	131	80%	

Performance of RNTCP Case Detection (2005, third quarter), Smear Conversion (2005, second quarter), and Treatment Outcomes (2004, third quarter)

State	District	Population (in lakh) covered by RNTCP ¹	No. of suspects examined	Suspects examined per lakh population	No of Smear positive patients diagnosed ²	% of S+ve cases among suspects	Total patients registered for treatment ³	Annualized total case detection rate	New smear positive patients registered for treatment	Annualized new smear positive case detection rate (%)	% new sputum positive out of total new pulmonary cases	No of new smear negative cases registered for treatment	No of new EP cases registered for treatment	% of new EP cases out of all new cases
Maharashtra	Pimpri Chinchwad	11	2311	212	284	0	508	186	180	66 (82%)	69%	82	125	32%
Maharashtra	Pune	28	2716	99	385	0	1015	147	349	51 (63%)	59%	238	248	30%
Maharashtra	Pune Rural	40	6334	159	795	0	1020	102	419	42 (53%)	65%	226	172	21%
Maharashtra	Raigarh-MH	24	3048	127	466	0	832	139	336	56 (70%)	56%	266	67	10%
Maharashtra	Ratnagiri	18	2787	151	355	0	675	147	261	57 (71%)	53%	230	47	9%
Maharashtra	Sangli	23	3685	158	331	0	569	98	230	40 (49%)	58%	164	88	18%
Maharashtra	Sangli_Muni_Corp	5	456	96	58	0	163	138	56	47 (59%)	55%	45	35	26%
Maharashtra	Satara	30	4638	153	414	0	1025	135	349	46 (58%)	49%	360	150	17%
Maharashtra	Sindhudurg	9	1976	211	151	0	309	132	110	47 (59%)	51%	106	34	14%
Maharashtra	Solapur	32	4818	149	440	0	748	92	374	46 (58%)	61%	243	61	9%
Maharashtra	Solapur Mun. Corp.	9	1940	205	267	0	360	152	136	57 (72%)	56%	107	32	12%
Maharashtra	Thane	49	6617	136	898	0	1720	141	747	61 (77%)	62%	464	230	16%
Maharashtra	Thane Mun. Corp.	14	1729	126	381	0	700	205	217	63 (79%)	62%	133	167	32%
Maharashtra	Ulhasnagar Mun. Corp.	5	971	189	187	0	234	182	79	62 (77%)	52%	74	24	14%
Maharashtra	Wardha	13	1902	142	207	0	486	146	193	58 (72%)	58%	142	91	21%
Maharashtra	Washim	11	789	71	124	0	312	113	123	44 (56%)	55%	100	32	13%
Maharashtra	Yavatmal	27	3790	142	429	0	829	124	297	45 (56%)	50%	295	109	16%
Manipur	Bishnupur	2	344	150	29	0	86	150	27	47 (63%)	50%	27	15	22%
Manipur	Chandel	1	285	209	14	0	51	150	14	41 (55%)	56%	11	8	24%
Manipur	Churachandpur	3	554	218	51	0	249	392	37	58 (78%)	24%	117	40	21%
Manipur	Imphal East	4	393	90	49	0	190	174	41	37 (50%)	35%	75	42	27%
Manipur	Imphal West	5	1014	208	108	0	242	198	76	62 (83%)	54%	65	70	33%
Manipur	Senapati	4	407	97	22	0	124	118	22	21 (28%)	37%	38	30	33%
Manipur	Tamenglong	1	84	68	7	0	19	61	4	13 (17%)	40%	6	4	29%
Manipur	Thoubal	4	346	85	43	0	145	143	32	31 (42%)	35%	59	32	26%
Manipur	Ukhrul	2	184	118	17	0	45	115	10	26 (34%)	48%	11	11	34%
Meghalaya	East Garo Hills	3	176	64	24	0	46	67	21	31 (41%)	64%	12	5	13%
Meghalaya	East Khasi Hills	7	792	108	142	0	497	271	109	59 (79%)	49%	112	120	35%
Meghalaya	Jaintia Hills	3	233	71	36	0	96	117	21	26 (34%)	39%	33	15	22%
Meghalaya	Ri Bhoi	2	193	90	32	0	77	144	25	47 (62%)	57%	19	15	25%
Meghalaya	West & South Garo Hills	7	788	115	97	0	202	118	81	47 (63%)	54%	70	7	4%
Meghalaya	West Khasi Hills	3	491	150	69	0	165	202	51	62 (83%)	57%	39	35	28%
Mizoram	Aizawl	4	950	252	94	0	222	236	50	53 (71%)	49%	53	69	40%
Mizoram	Champhai	1	126	112	18	0	50	178	13	46 (62%)	52%	12	15	38%
Mizoram	Kolasib	1	190	281	33	0	62	367	30	178 (237%)	60%	20	3	6%
Mizoram	Lawngtlai	1	95	117	9	0	25	124	14	69 (92%)	74%	5	2	10%
Mizoram	Lunglei	2	317	209	45	0	77	203	25	66 (88%)	57%	19	14	24%
Mizoram	Mamit	1	143	207	6	0	13	75	6	35 (46%)	55%	5	1	8%
Mizoram	Saiha	1	107	159	9	0	40	237	10	59 (79%)	42%	14	6	20%
Mizoram	Serchhip	1	89	145	7	0	20	130	6	39 (52%)	38%	10	2	11%
Nagaland	Dimapur	4	492	131	46	0	182	194	46	49 (65%)	37%	80	9	7%
Nagaland	Kohima	4	348	91	38	0	123	128	35	37 (49%)	51%	33	22	24%
Nagaland	Mokokchung	3	321	116	39	0	82	118	39	56 (75%)	83%	8	11	19%
Nagaland	Mon	3	279	88	33	0	98	124	33	42 (56%)	65%	18	18	26%
Nagaland	Phek	2	162	90	22	0	54	119	19	42 (56%)	63%	11	18	38%
Nagaland	Tuensang	5	710	140	63	0	188	149	63	50 (66%)	64%	36	51	34%

Performance of RNTCP Case Detection (2005, third quarter), Smear Conversion (2005, second quarter), and Treatment Outcomes (2004, third quarter)

State	District	Population (in lakh) covered by RNTCP ¹	No. of suspects examined	Suspects examined per lakh population	No of Smear positive patients diagnosed ²	% of S+ve cases among suspects	Total patients registered for treatment ³	Annualized total case detection rate	New smear positive patients registered for treatment	Annualized new smear positive case detection rate (%)	% new sputum positive out of total new pulmonary cases	No of new smear negative cases registered for treatment	No of new EP cases registered for treatment	% of new EP cases out of all new cases	
Punjab	Nawanshahr	6	1075	170	109	10%	208	132	72	46	(48%)	56%	57	36	22%
Punjab	Patiala	20	4121	208	526	13%	824	167	256	52	(55%)	57%	191	232	34%
Punjab	Rupnagar	12	2165	181	216	10%	384	129	152	51	(54%)	69%	69	92	29%
Punjab	Sangrur	21	2939	137	303	10%	626	117	231	43	(45%)	53%	202	78	15%

Rajasthan	Ajmer	24	3394	141	948	28%	1373	228	491	82	(102%)	57%	377	190	18%
Rajasthan	Alwar	33	3559	108	744	21%	1255	152	463	56	(70%)	54%	396	138	14%
Rajasthan	Banswara	17	1985	120	546	28%	832	201	364	88	(110%)	64%	201	60	10%
Rajasthan	Baran	11	1883	167	492	26%	711	252	335	119	(148%)	69%	154	69	12%
Rajasthan	Barmer	22	2932	135	484	17%	827	152	318	59	(73%)	49%	326	34	5%
Rajasthan	Bharatpur	23	2697	116	504	19%	816	141	289	50	(62%)	48%	316	51	8%
Rajasthan	Bhilwara	22	3673	165	773	21%	1277	230	478	86	(108%)	61%	300	164	17%
Rajasthan	Bikaner	21	2805	134	584	21%	761	145	268	51	(64%)	60%	181	154	26%
Rajasthan	Bundi	11	1317	124	228	17%	519	195	194	73	(91%)	52%	177	39	10%
Rajasthan	Chittaurgarh	20	2634	132	530	20%	809	162	354	71	(89%)	72%	140	125	20%
Rajasthan	Churu	19	1869	100	581	31%	973	207	381	81	(101%)	60%	254	124	16%
Rajasthan	Dausa	15	2002	138	355	18%	663	182	259	71	(89%)	59%	182	90	17%
Rajasthan	Dhaulpur	11	1535	141	344	22%	507	187	214	79	(99%)	65%	113	48	13%
Rajasthan	Dungarpur	12	1696	139	613	36%	745	244	407	133	(166%)	72%	160	34	6%
Rajasthan	Ganganagar	20	2175	110	455	21%	850	172	299	61	(76%)	51%	283	120	17%
Rajasthan	Hanumangarh	17	2448	146	550	22%	787	188	307	73	(92%)	63%	179	118	20%
Rajasthan	Jaipur	58	13337	230	2141	16%	3238	223	979	67	(84%)	52%	911	622	25%
Rajasthan	Jaisalmer	6	786	140	102	13%	162	115	63	45	(56%)	62%	39	29	22%
Rajasthan	Jalore	16	1078	67	261	24%	466	116	153	38	(48%)	45%	189	11	3%
Rajasthan	Jhalawar	13	1763	135	343	19%	521	160	204	63	(78%)	53%	184	37	9%
Rajasthan	Jhunjhunun	21	2025	96	465	23%	704	133	218	41	(52%)	52%	198	84	17%
Rajasthan	Jodhpur	32	3010	95	692	23%	874	110	350	44	(55%)	54%	296	62	9%
Rajasthan	Karauli	13	1864	140	489	26%	745	224	304	91	(114%)	59%	212	57	10%
Rajasthan	Kota	17	2377	137	515	22%	789	182	289	67	(83%)	56%	223	127	20%
Rajasthan	Nagaur	31	3256	106	590	18%	997	130	376	49	(61%)	53%	338	82	10%
Rajasthan	Pali	20	2058	102	464	23%	816	162	293	58	(73%)	49%	309	72	11%
Rajasthan	Rajsamand	11	925	85	208	22%	413	152	199	73	(91%)	67%	97	61	17%
Rajasthan	Sawai Madhopur	12	2138	173	446	21%	656	213	259	84	(105%)	62%	162	85	17%
Rajasthan	Sikar	25	3061	121	617	20%	993	157	313	50	(62%)	50%	315	114	15%
Rajasthan	Sirohi	9	1134	121	270	24%	442	188	185	79	(98%)	54%	159	27	7%
Rajasthan	Tonk	13	2309	173	611	26%	967	289	401	120	(150%)	59%	284	74	10%
Rajasthan	Udaipur	29	5257	181	1702	32%	1773	244	770	106	(132%)	69%	344	263	19%

Sikkim	East	3	1289	470	113	9%	182	265	60	88	(117%)	67%	30	47	34%
Sikkim	North	0	85	185	10	12%	28	244	6	52	(70%)	33%	12	4	18%
Sikkim	South	1	422	286	41	10%	106	288	33	90	(119%)	62%	20	28	35%
Sikkim	West	1	223	162	19	9%	68	197	19	55	(73%)	61%	12	22	42%

Tamil Nadu	Chennai	44	15902	361	1647	10%	1786	162	708	64	(86%)	64%	405	442	28%
Tamil Nadu	Coimbatore	44	8748	198	675	8%	1191	108	510	46	(62%)	66%	262	249	24%
Tamil Nadu	Cuddalore	24	6385	268	428	7%	908	153	324	54	(73%)	50%	321	132	17%
Tamil Nadu	Dharmapuri	30	8570	290	473	6%	883	119	341	46	(62%)	59%	238	218	27%
Tamil Nadu	Dindigul	20	7081	354	605	9%	901	180	376	75	(100%)	57%	288	175	21%
Tamil Nadu	Erode	27	7697	287	660	9%	810	121	382	57	(76%)	66%	195	120	17%
Tamil Nadu	Kancheepuram	30	4968	166	475	10%	1231	164	480	64	(85%)	65%	254	291	28%

Performance of RNTCP Case Detection (2005, third quarter), Smear Conversion (2005, second quarter), and Treatment Outcomes (2004, third quarter)

State	District	Population (in lakh) covered by RNTCP ¹	No. of suspects examined	Suspects examined per lakh population	No of Smear positive patients diagnosed ²	% of S+ve cases among suspects	Total patients registered for treatment ³	Annualized total case detection rate	New smear positive patients registered for treatment	Annualized new smear positive case detection rate (%)	% new sputum positive out of total new pulmonary cases	No of new smear negative cases registered for treatment	No of new EP cases registered for treatment	% of new EP cases out of all new cases
Tamil Nadu	Kanniyakumari	17	3672	211	364	10%	612	141	250	57 (77%)	53%	226	79	14%
Tamil Nadu	Karur	10	2269	233	202	9%	354	145	153	63 (84%)	62%	92	54	18%
Tamil Nadu	Madurai	27	5494	206	568	10%	1263	189	430	64 (86%)	49%	455	217	20%
Tamil Nadu	Nagapattinam	16	2756	178	220	8%	444	114	158	41 (54%)	47%	177	49	13%
Tamil Nadu	Namakkal	16	4292	275	222	5%	530	136	200	51 (68%)	60%	133	149	31%
Tamil Nadu	Perambalur	12	2192	178	181	8%	407	132	155	50 (67%)	50%	157	63	17%
Tamil Nadu	Pudukkottai	15	3585	237	255	7%	471	124	191	50 (67%)	57%	144	89	21%
Tamil Nadu	Ramanathapuram	12	2548	206	218	9%	518	168	226	73 (98%)	57%	173	72	15%
Tamil Nadu	Salem	31	7927	254	558	7%	991	127	419	54 (72%)	63%	247	212	24%
Tamil Nadu	Sivaganga	12	2333	194	150	6%	400	133	160	53 (71%)	53%	141	52	15%
Tamil Nadu	Thanjavur	23	7560	329	487	6%	765	133	309	54 (72%)	60%	202	152	23%
Tamil Nadu	The Nilgiris	8	968	121	45	5%	123	62	30	15 (20%)	41%	43	37	34%
Tamil Nadu	Theni	11	3450	302	256	7%	662	232	159	56 (74%)	29%	392	46	8%
Tamil Nadu	Thiruvallur	29	4661	163	421	9%	1072	150	468	66 (87%)	64%	265	217	23%
Tamil Nadu	Thiruvavur	12	2489	205	196	8%	335	110	158	52 (69%)	66%	82	57	19%
Tamil Nadu	Tiruchirappalli	25	5845	235	469	8%	810	130	341	55 (73%)	60%	223	176	24%
Tamil Nadu	Tirunelveli	29	5539	190	508	9%	1022	140	338	46 (62%)	43%	453	132	14%
Tamil Nadu	Tiruvanamalai	23	5865	258	555	9%	763	134	373	66 (87%)	67%	184	142	20%
Tamil Nadu	Toothukudi	16	3053	187	377	12%	595	146	272	67 (89%)	59%	188	74	14%
Tamil Nadu	Vellore	36	11641	320	943	8%	1252	138	557	61 (82%)	63%	328	222	20%
Tamil Nadu	Viluppuram	31	7502	244	683	9%	1217	158	480	63 (83%)	58%	349	183	18%
Tamil Nadu	Virudhunagar	18	4388	240	452	10%	859	188	299	65 (87%)	53%	262	210	27%
Tripura	South Tripura	8	680	84	49	7%	93	46	32	16 (21%)	55%	26	10	15%
Tripura	West Tripura	16	1211	75	171	14%	226	56	120	30 (39%)	67%	60	17	9%
Uttar Pradesh	Agra	40	4376	111	689	16%	1098	111	331	33 (35%)	55%	271	129	18%
Uttar Pradesh	Aligarh	33	3417	104	535	16%	829	101	359	44 (46%)	60%	243	117	16%
Uttar Pradesh	Allahabad	54	7710	142	891	12%	1417	105	563	42 (44%)	54%	489	127	11%
Uttar Pradesh	Azamgarh	43	2856	66	591	21%	817	75	444	41 (43%)	64%	251	42	6%
Uttar Pradesh	Baghpat	13	1189	93	213	18%	364	114	183	57 (60%)	74%	63	51	17%
Uttar Pradesh	Bahraich	29	4238	144	727	17%	1090	148	515	70 (74%)	63%	301	143	15%
Uttar Pradesh	Ballia	30	1357	45	154	11%	425	56	109	14 (15%)	30%	253	24	6%
Uttar Pradesh	Balrampur	18	1199	65	217	18%	401	87	175	38 (40%)	50%	175	13	4%
Uttar Pradesh	Banda	16	1267	77	247	19%	342	83	132	32 (34%)	53%	119	36	13%
Uttar Pradesh	Barabanki	29	2873	98	677	24%	1066	146	525	72 (75%)	64%	297	112	12%
Uttar Pradesh	Bareilly	39	6394	162	996	16%	1954	198	745	76 (80%)	52%	681	134	9%
Uttar Pradesh	Basti	23	2427	107	434	18%	705	124	282	50 (52%)	53%	251	94	15%
Uttar Pradesh	Bijnor	34	4142	121	518	13%	866	101	310	36 (38%)	51%	292	114	16%
Uttar Pradesh	Budaun	34	5572	166	755	14%	1111	132	600	71 (75%)	65%	323	44	5%
Uttar Pradesh	Bulandshahar	32	3386	106	516	15%	1010	126	373	47 (49%)	49%	394	124	14%
Uttar Pradesh	Deoria	30	1474	49	152	10%	291	83	83	83 (38%)	38%	135	22	9%
Uttar Pradesh	Etah	31	3343	109	491	15%	755	99	265	35 (37%)	51%	254	87	14%
Uttar Pradesh	Etawah	15	2215	151	326	15%	488	133	226	62 (65%)	56%	180	34	8%
Uttar Pradesh	Faizabad	23	2046	89	268	13%	428	75	204	36 (38%)	64%	116	56	15%
Uttar Pradesh	Farrukhabad	17	2189	127	443	20%	678	157	292	68 (71%)	61%	186	94	16%
Uttar Pradesh	Fatehpur	25	3006	119	439	15%	644	102	245	39 (41%)	52%	223	46	9%
Uttar Pradesh	Firozabad	22	44	2	13	30%	2	2	2	2 (100%)	100%	0	0	0%
Uttar Pradesh	Gautam Budh Nagar	13	2234	171	362	16%	728	223	259	79 (84%)	56%	204	141	23%

Performance of RNTCP Case Detection (2005, third quarter), Smear Conversion (2005, second quarter), and Treatment Outcomes (2004, third quarter)

State	District	Population (in lakh) covered by RNTCP ¹	No. of suspects examined	Suspects examined per lakh population	No of Smear positive patients diagnosed ²	% of S+ve cases among suspects	Total patients registered for treatment ³	Annualized total case detection rate	New smear positive patients registered for treatment	Annualized new smear positive case detection rate (%)	% new sputum positive out of total new pulmonary cases	No of new smear negative cases registered for treatment	No of new EP cases registered for treatment	% of new EP cases out of all new cases
Uttar Pradesh	Ghaziabad	36	7041	195	1186	17%	2212	245	898	100 (105%)	62%	559	408	22%
Uttar Pradesh	Ghazipur	33	2725	82	268	10%	433	52	195	23 (25%)	53%	171	19	5%
Uttar Pradesh	Gonda	30	2219	73	450	20%	934	123	321	42 (45%)	39%	495	18	2%
Uttar Pradesh	Gorakhpur	41	1060	26	159	15%	315	30	106	10 (11%)	41%	154	29	10%
Uttar Pradesh	Hamirpur-UP	11	1650	144	224	14%	424	148	135	47 (50%)	41%	195	31	9%
Uttar Pradesh	Hardoi	37	4227	114	827	20%	1106	119	482	52 (54%)	62%	297	50	6%
Uttar Pradesh	Hathras	15	1441	99	266	18%	267		130		81%	31	10	6%
Uttar Pradesh	Jalaun	16	2304	144	603	26%	631	158	347	87 (92%)	74%	125	19	4%
Uttar Pradesh	Jaunpur	43	3804	89	585	15%	1129	105	396	37 (39%)	44%	514	69	7%
Uttar Pradesh	Jhansi	19	2126	111	424	20%	559	117	283	59 (62%)	70%	124	50	11%
Uttar Pradesh	Jyotiba Phule Nagar	16	1835	112	290	16%	467		156		51%	150	14	4%
Uttar Pradesh	Kannauj	15	1316	87	230	17%	363	96	149	39 (41%)	60%	99	12	5%
Uttar Pradesh	Kanpur Dehat	17	962	55	132	14%	233	54	82	19 (20%)	48%	89	8	4%
Uttar Pradesh	Kanpur Nagar	45	3964	87	1030	26%	1318	116	570	50 (53%)	64%	323	148	14%
Uttar Pradesh	Kheri	35	3306	94	549	17%	1001	114	369	42 (44%)	47%	417	64	8%
Uttar Pradesh	Kushinagar	32	2276	72	266	12%	441	56	210	26 (28%)	54%	182	13	3%
Uttar Pradesh	Lalitpur	11	1138	106	189	17%	239	89	98	37 (39%)	65%	53	7	4%
Uttar Pradesh	Lucknow	40	8299	206	1212	15%	1685	167	725	72 (76%)	62%	445	255	18%
Uttar Pradesh	Maharajanj	24	1303	55	138	11%	292	49	118	20 (21%)	44%	153	17	6%
Uttar Pradesh	Mahoba	8	765	98	116	15%	122	63	65	33 (35%)	83%	13	2	3%
Uttar Pradesh	Mainpuri	17	2059	118	374	18%	632	145	313	72 (75%)	56%	243	7	1%
Uttar Pradesh	Mathura	23	2305	102	329	14%	636	112	275	48 (51%)	54%	230	57	10%
Uttar Pradesh	Mau	20	1639	81	261	16%	522	103	181	36 (38%)	40%	270	25	5%
Uttar Pradesh	Meerut	33	5023	153	615	12%	1206	147	518	63 (66%)	55%	422	140	13%
Uttar Pradesh	Mirzapur	23	1834	79	354	19%	488	84	238	41 (43%)	58%	175	19	4%
Uttar Pradesh	Moradabad	41	5669	138	629	11%	1244	121	487	47 (50%)	45%	589	77	7%
Uttar Pradesh	Muzaffarnagar	39	4793	123	735	15%	1085	112	483	50 (52%)	58%	345	104	11%
Uttar Pradesh	Pilibhit	18	2416	134	395	16%	615	137	254	56 (59%)	64%	142	24	6%
Uttar Pradesh	Pratapgarh	30	2061	69	270	13%	534	71	175	23 (25%)	43%	229	47	10%
Uttar Pradesh	Raebareli	31	6913	220	557	8%	1034	131	436	55 (58%)	49%	460	43	5%
Uttar Pradesh	Rampur	21	4167	198	578	14%	835	158	347	66 (69%)	61%	221	72	11%
Uttar Pradesh	Saharanpur	31	4752	152	817	17%	1187	152	544	70 (73%)	71%	221	146	16%
Uttar Pradesh	Sant Ravidas Nagar	15	961	65	156	16%	330	89	106	29 (30%)	40%	158	16	6%
Uttar Pradesh	Shahjahanpur	28	2991	107	412	14%	702	100	253	36 (38%)	44%	325	50	8%
Uttar Pradesh	Siddharthnagar	22	1328	59	196	15%	323	58	146	26 (28%)	54%	122	11	4%
Uttar Pradesh	Sitapur	40	5356	135	821	15%	1564	158	602	61 (64%)	49%	625	78	6%
Uttar Pradesh	Sonbhadra	16	617	38	112	18%	171	43	66	16 (17%)	50%	65	11	8%
Uttar Pradesh	Sultanpur	35	3622	104	421	12%	587	67	292	33 (35%)	57%	219	28	5%
Uttar Pradesh	Unnao	30	3070	104	503	16%	1209	163	379	51 (54%)	36%	665	60	5%
Uttar Pradesh	Varanasi	35	3697	107	579	16%	1056	122	409	47 (50%)	51%	392	139	15%
Uttaranchal	Almora	7	1130	167	124	11%	173	102	83	49 (52%)	81%	19	30	23%
Uttaranchal	Bageshwar	3	293	109	27	9%	47	70	21	31 (33%)	66%	11	1	3%
Uttaranchal	Chamoli	4	789	199	101	13%	157	159	73	74 (78%)	63%	43	19	14%
Uttaranchal	Champawat	2	502	208	43	9%	53	88	27	45 (47%)	66%	14	2	5%
Uttaranchal	Dehradun	14	2376	173	293	12%	604	176	196	57 (60%)	45%	237	79	15%
Uttaranchal	Garhwal	7	2218	297	140	6%	270	144	117	63 (66%)	54%	101	26	11%
Uttaranchal	Hardwar	15	1946	126	351	18%	384	99	185	48 (50%)	72%	71	23	8%

Performance of RNTCP Case Detection (2005, third quarter), Smear Conversion (2005, second quarter), and Treatment Outcomes (2004, third quarter)

State	District	No of smear retreatment cases registered for treatment	% of retreatment cases out of all smear positive cases	No (%) of pediatric cases out of all New cases		3 month conversion rate of new smear positive patients ⁴	Cure rate of new smear positive patients ⁵	Success rate of new smear positive patients ⁵	% smear positive patients living in the district placed on DOTS	No (%) of patients put on Non-DOTS treatment regimen		No (%) of Initial defaulters		No (%) of NSP cases started RNTCP DOTS within 7 days of diagnosis		No (%) of NSP cases registered within one month of starting RNTCP DOTS treatment		No (%) of interviewed NSP cases who received DOT during IP as per guidelines		No (%) of cured NSP cases having end of treatment follow-up sputum done within 7 days of last dose	
				No	%					No	%	No	%	No	%	No	%	No	%	No	%
Uttar Pradesh	Ghaziabad	311	26%	148	8%	92%	88%	88%	93%	0	0%	86	7%	885	94%	1092	100%	348	37%	716	89%
Uttar Pradesh	Ghaziipur	33	14%	10	3%	86%			98%	0	0%	4	2%	NR	NR	NR	NR	NR	NR		
Uttar Pradesh	Gonda	98	23%	32	4%	76%			91%	0	0%	40	9%	292	91%	29	9%	NR	NR		
Uttar Pradesh	Gorakhpur	24	18%	12	4%	71%			82%	1	1%	28	18%	89	84%	94	89%	56	55%		
Uttar Pradesh	Hamirpur-UP	48	26%	29	8%	95%	84%	91%	92%	0	0%	17	9%	106	79%	135	100%	10	100%	101	84%
Uttar Pradesh	Hardoi	244	34%	38	5%	87%			88%	0	0%	99	12%	316	66%	NR	NR	140	29%		
Uttar Pradesh	Hathras	91	41%	5	3%				87%	0	0%	33	13%	NR	NR	NR	NR	NR	NR		
Uttar Pradesh	Jalaun	131	27%	18	4%	90%			84%	0	0%	91	16%	225	65%	319	92%	72	92%		
Uttar Pradesh	Jaunpur	125	24%	18	2%	88%	79%	84%	90%	0	0%	57	10%	NR	NR	NR	NR	NR	NR	0	0%
Uttar Pradesh	Jhansi	93	25%	25	5%	91%	85%	85%	90%	0	0%	41	10%	260	92%	283	100%	8	57%	174	99%
Uttar Pradesh	Jyotiba Phule Nagar	89	36%	7	2%				84%	0	0%	45	16%	130	83%	151	97%	NR	NR		
Uttar Pradesh	Kannauj	86	37%	16	6%	77%			91%	0	0%	21	9%	124	83%	149	100%	30	75%		
Uttar Pradesh	Kanpur Dehat	50	38%	4	2%	96%			100%	0	0%	0	0%	71	87%	80	98%	38	48%		
Uttar Pradesh	Kanpur Nagar	246	30%	61	6%	88%	65%	83%	82%	0	0%	175	18%	NR	NR	NR	NR	NR	NR	0	0%
Uttar Pradesh	Kheri	151	29%	48	6%	87%	81%	82%	91%	0	0%	49	9%	NR	NR	NR	NR	NR	NR	0	0%
Uttar Pradesh	Kushinagar	32	13%	18	4%	83%			88%	0	0%	31	12%	210	90%	234	100%	NR	NR		
Uttar Pradesh	Lalitpur	57	37%	8	5%	83%			82%	0	0%	33	18%	90	92%	98	100%	25	100%		
Uttar Pradesh	Lucknow	222	23%	91	6%	93%	87%	87%	87%	3	0%	133	12%	720	99%	725	100%	116	97%	563	100%
Uttar Pradesh	Maharajanj	4	3%	3	1%	95%			81%	0	0%	26	19%	NR	NR	NR	NR	NR	NR		
Uttar Pradesh	Mahoba	37	36%	4	5%	77%			89%	4	4%	8	7%	57	88%	65	100%	25	68%		
Uttar Pradesh	Mainpuri	68	18%	20	4%	92%	86%	87%	93%	0	0%	27	7%	247	95%	253	97%	13	65%	115	52%
Uttar Pradesh	Mathura	63	19%	14	2%	94%	87%	87%	NR	NR	NR	NR	212	83%	12	17%	77	96%	173	98%	
Uttar Pradesh	Mau	43	19%	36	8%	86%			92%	0	0%	20	8%	NR	NR	NR	NR	NR	NR		
Uttar Pradesh	Meerut	100	16%	10	1%	93%	92%	93%	99%	0	0%	8	1%	452	87%	518	100%	NR	NR	448	71%
Uttar Pradesh	Mirzapur	56	19%	11	3%	78%	76%	81%	83%	0	0%	60	17%	197	83%	238	100%	65	27%	123	75%
Uttar Pradesh	Moradabad	79	14%	42	4%	90%	78%	80%	88%	0	0%	75	12%	434	89%	82	17%	250	51%	314	66%
Uttar Pradesh	Muzaffarnagar	146	23%	42	5%	84%	75%	85%	78%	0	0%	159	22%	402	83%	471	98%	3	60%	469	87%
Uttar Pradesh	Pilibhit	160	39%	27	6%	86%			84%	0	0%	63	16%	227	89%	254	100%	70	70%		
Uttar Pradesh	Pratapgarh	83	32%	26	6%	47%			98%	1	0%	3	1%	NR	NR	NR	NR	NR	NR		
Uttar Pradesh	Raebareli	94	18%	21	2%	80%	74%	89%	92%	0	0%	43	8%	380	83%	458	100%	21	20%	326	77%
Uttar Pradesh	Rampur	190	35%	38	6%	91%	86%	86%	96%	0	0%	22	4%	334	96%	347	100%	98	28%	160	82%
Uttar Pradesh	Saharanpur	256	32%	66	7%	92%	87%	88%	91%	0	0%	69	9%	508	93%	544	100%	6	100%	441	95%
Uttar Pradesh	Sant Ravidas Nagar	29	21%	6	2%	99%			87%	0	0%	20	13%	NR	NR	NR	NR	NR	NR		
Uttar Pradesh	Shahjahanpur	57	18%	25	4%	89%	80%	86%	80%	0	0%	76	20%	NR	NR	NR	NR	NR	NR	0	0%
Uttar Pradesh	Siddharthnagar	43	23%	5	2%	92%			97%	0	0%	5	3%	100	68%	146	100%	26	96%		
Uttar Pradesh	Sitapur	213	26%	46	4%	90%	87%	89%	88%	0	0%	98	12%	422	70%	602	100%	128	90%	390	85%
Uttar Pradesh	Sonbhadra	27	29%	5	4%	91%			93%	0	0%	8	7%	NR	NR	NR	NR	NR	NR		
Uttar Pradesh	Sultanpur	48	14%	19	4%	94%	89%	93%	94%	0	0%	26	6%	NR	NR	NR	NR	NR	NR	0	0%
Uttar Pradesh	Unnao	104	22%	45	4%	94%	93%	93%	96%	0	0%	19	4%	367	97%	379	100%	204	54%	341	97%
Uttar Pradesh	Varanasi	102	20%	56	6%	92%	88%	89%	87%	1	0%	31	6%	NR	NR	NR	NR	NR	NR	0	0%
Uttaranchal	Almora	40	33%	0	0%	97%	85%	85%	100%	0	0%	0	0%	83	100%	83	100%	22	88%	46	100%
Uttaranchal	Bageshwar	14	40%	0	0%	92%	86%	86%	100%	0	0%	0	0%	20	95%	20	95%	12	86%	10	100%
Uttaranchal	Chamoli	19	21%	5	4%	78%	86%	87%	91%	2	2%	7	7%	159	92%	162	94%	29	91%	36	92%
Uttaranchal	Champawat	10	27%	1	2%	100%	85%	85%	100%	0	0%	0	0%	25	93%	22	81%	26	96%	11	85%
Uttaranchal	Dehradun	81	29%	73	14%	99%	94%	94%	100%	0	0%	0	0%	196	100%	196	100%	32	86%	203	99%
Uttaranchal	Garhwal	22	16%	12	5%	96%	91%	91%	100%	0	0%	0	0%	134	96%	135	96%	67	93%	40	93%
Uttaranchal	Hardwar	99	35%	10	4%	92%	78%	78%	95%	8	3%	8	3%	179	97%	181	98%	31	89%	149	93%

**Performance of RNTCP Case Detection (2005, third quarter), Smear Conversion (2005, second quarter),
and Treatment Outcomes (2004, third quarter)**

State	District	Population (in lakh) covered by RNTCP ¹	No. of suspects examined	Suspects examined per lakh population	No of Smear positive patients diagnosed ²	% of S+ve cases among suspects	Total patients registered for treatment ³	Annualized total case detection rate	New smear positive patients registered for treatment	Annualized new smear positive case detection rate (%)	% new sputum positive out of total new pulmonary cases	No of new smear negative cases registered for treatment	No of new EP cases registered for treatment	% of new EP cases out of all new cases
Uttaranchal	Nainital	8	1930	236	333	17%	390	191	164	80 (84%)	68%	77	56	19%
Uttaranchal	Pithoragarh	5	757	153	97	13%	137	111	59	48 (50%)	66%	31	17	16%
Uttaranchal	Rudraprayag	2	340	139	49	14%	70	115	32	52 (55%)	65%	17	7	13%
Uttaranchal	Tehri Garhwal	6	825	127	107	13%	190	117	68	42 (44%)	55%	55	25	17%
Uttaranchal	Udhamsingh Nagar	13	2409	182	311	13%	441	133	175	53 (56%)	59%	124	37	11%
Uttaranchal	Uttarkashi	3	812	257	116	14%	180	228	74	94 (99%)	73%	27	32	24%
West Bengal	Bankura	34	6127	180	753	12%	1074	126	552	65 (86%)	70%	231	139	15%
West Bengal	Bardhaman	74	11799	160	1411	12%	2607	141	1055	57 (76%)	55%	868	205	10%
West Bengal	Birbhum	32	5741	178	793	14%	1110	138	590	73 (98%)	68%	275	78	8%
West Bengal	Dakshin Dinajpur	16	3036	189	487	16%	676	169	383	95 (127%)	74%	132	66	11%
West Bengal	Darjiling	17	3519	205	474	13%	876	204	310	72 (96%)	61%	197	175	26%
West Bengal	Haora	46	7827	171	808	10%	1454	127	494	43 (58%)	56%	385	236	21%
West Bengal	Hugli	54	7492	139	907	12%	1677	125	688	51 (68%)	59%	473	213	16%
West Bengal	Jalpaiguri	36	6910	190	1048	15%	1553	171	778	86 (114%)	77%	237	240	19%
West Bengal	Koch Bihar	26	5545	210	554	10%	811	123	410	62 (83%)	66%	207	107	15%
West Bengal	Kolkata	49	7028	144	1110	16%	1616	132	679	56 (74%)	72%	266	313	25%
West Bengal	Maldah	35	6123	174	818	13%	1360	155	643	73 (98%)	63%	378	138	12%
West Bengal	Medinipur East	47	6826	145	687	10%	925	78	514	44 (58%)	81%	119	119	16%
West Bengal	Medinipur West	56	7568	136	1109	15%	1809	130	817	59 (78%)	62%	497	193	13%
West Bengal	Murshidabad	63	9322	149	1017	11%	1740	111	867	55 (74%)	69%	384	257	17%
West Bengal	Nadia	49	10853	221	776	7%	1531	125	596	48 (65%)	54%	501	161	13%
West Bengal	North 24 Parganas	95	12143	127	1569	13%	2708	114	1271	53 (71%)	71%	516	413	19%
West Bengal	Puruliya	27	4800	177	646	13%	1202	178	558	82 (110%)	58%	410	71	7%
West Bengal	South 24 Parganas	74	10386	141	1124	11%	1855	101	958	52 (69%)	70%	407	228	14%
West Bengal	Uttar Dinajpur	26	4529	174	458	10%	875	134	381	58 (78%)	58%	274	88	12%
Grand Total		10590	1435861	136	199164	14%	333625	129	132397	51 (68%)	57%	98047	43526	16%

Performance of RNTCP Case Detection (2005, third quarter), Smear Conversion (2005, second quarter), and Treatment Outcomes (2004, third quarter)

State	District	No of smear positive retreatment cases registered for treatment	% of retreatment cases out of all smear positive cases	No (%) of pediatric cases out of all New cases	3 month conversion rate of new smear positive patients ⁴	Cure rate of new smear positive patients ⁵	Success rate of new smear positive patients ⁵	% smear positive patients living in the district placed on DOTS	No (%) of patients put on Non-DOTS treatment regimen	No (%) of Initial defaulters	No (%) of NSP cases started RNTCP DOTS within 7 days of diagnosis	No (%) of NSP cases registered within one month of starting RNTCP DOTS treatment	No (%) of interviewed NSP cases who received DOT during IP as per guidelines	No (%) of cured NSP cases having end of treatment follow-up sputum done within 7 days of last dose
Uttaranchal	Nainital	90	35%	7	90%	91%	94%	100%	0	0%	160	161	31	114
Uttaranchal	Pithoragarh	30	34%	1	99%	98%	98%	88%	2	2%	50	52	48	33
Uttaranchal	Rudraprayag	13	29%	1	95%	74%	79%	98%	0	0%	27	28	18	39
Uttaranchal	Tehri Garhwal	41	38%	6	98%	93%	93%	98%	0	0%	62	64	23	25
Uttaranchal	Udhamsingh Nagar	89	34%	13	92%	82%	83%	94%	8	3%	170	172	32	142
Uttaranchal	Uttarkashi	40	35%	11	92%	86%	91%	95%	0	0%	69	71	17	52
West Bengal	Bankura	116	17%	22	92%	89%	91%	96%	0	0%	359	463	28	162
West Bengal	Bardhaman	301	22%	93	89%	87%	87%	93%	0	0%	773	1048	NR	737
West Bengal	Birbhum	121	17%	27	91%	88%	89%	94%	6	1%	39	502	120	471
West Bengal	Dakshin Dinajpur	55	13%	27	90%	83%	83%	86%	0	0%	266	332	20	269
West Bengal	Darjiling	130	30%	79	86%	67%	78%	86%	3	1%	231	258	32	0
West Bengal	Haora	199	29%	116	90%	84%	85%	82%	1	0%	437	467	42	398
West Bengal	Hugli	168	20%	54	90%	89%	90%	94%	0	0%	571	686	75	477
West Bengal	Jalpaiguri	231	23%	111	89%	89%	89%	95%	0	0%	600	752	45	673
West Bengal	Koch Bihar	67	14%	18	91%	87%	87%	89%	3	1%	262	323	11	255
West Bengal	Kolkata	283	29%	100	84%	85%	85%	90%	10	1%	636	679	29	600
West Bengal	Maldah	142	18%	101	88%	82%	82%	81%	11	1%	317	531	25	344
West Bengal	Medinipur East	111	18%	39	87%	83%	84%	93%	0	0%	68	480	300	186
West Bengal	Medinipur West	184	18%	53	92%	85%	87%	86%	0	0%	584	622	34	515
West Bengal	Murshidabad	178	17%	104	91%	87%	88%	93%	0	0%	740	851	236	679
West Bengal	Nadia	150	20%	75	91%	89%	89%	100%	0	0%	554	596	115	485
West Bengal	North 24 Parganas	350	22%	133	89%	90%	90%	94%	19	1%	1288	1267	292	946
West Bengal	Puruliya	72	11%	25	91%	85%	87%	94%	6	1%	419	536	87	353
West Bengal	South 24 Parganas	175	15%	78	93%	90%	92%	96%	0	0%	923	957	53	643
West Bengal	Uttar Dinajpur	61	14%	43	91%	86%	86%	94%	0	0%	357	370	55	310
Grand Total		45974	26%	15477	88%	84%	86%	90%	1788	1%	15868	95307	30638	76943

NR indicate districts have not reported till 24th Nov 2005; Values for grey areas are not expected

Estimated New Smear Positive cases / lakh population based on ARTI data for North Zone (Chandigarh, Delhi, Haryana, Himachal Pradesh, Jammu & Kashmir, Punjab, Uttar Pradesh, Uttaranchal) is 95; East Zone (Andaman & Nicobar, Arunachal Pradesh, Assam, Bihar, Jharkhand, Manipur, Meghalaya, Mizoram, Nagaland, Sikkim, Tripura, West Bengal) is 75; South Zone (Andhra Pradesh, Karnataka, Kerala, Lakshdweep, Pondicherry, Tamil Nadu) is 75 and West Zone (Chhattisgarh, Dadra & Nagar Haveli, Daman & Diu, Goa, Gujarat, Madhya Pradesh, Maharashtra, Rajasthan) is 80; Orissa is 85

1 Projected population based on census population of 2001 is used for calculation of case-detection rate. 1 lakh = 100,000 population

2 Smear positive patients diagnosed include new smear positive cases and smear positive retreatment cases

3 Total patients registered for treatment includes new sputum smear positive cases, new smear negative cases, new extra-pulmonary cases, smear positive retreatment cases and 'Others'

4 Smear conversion rate not expected for states that began implementing RNTCP during 3rd quarter 2005

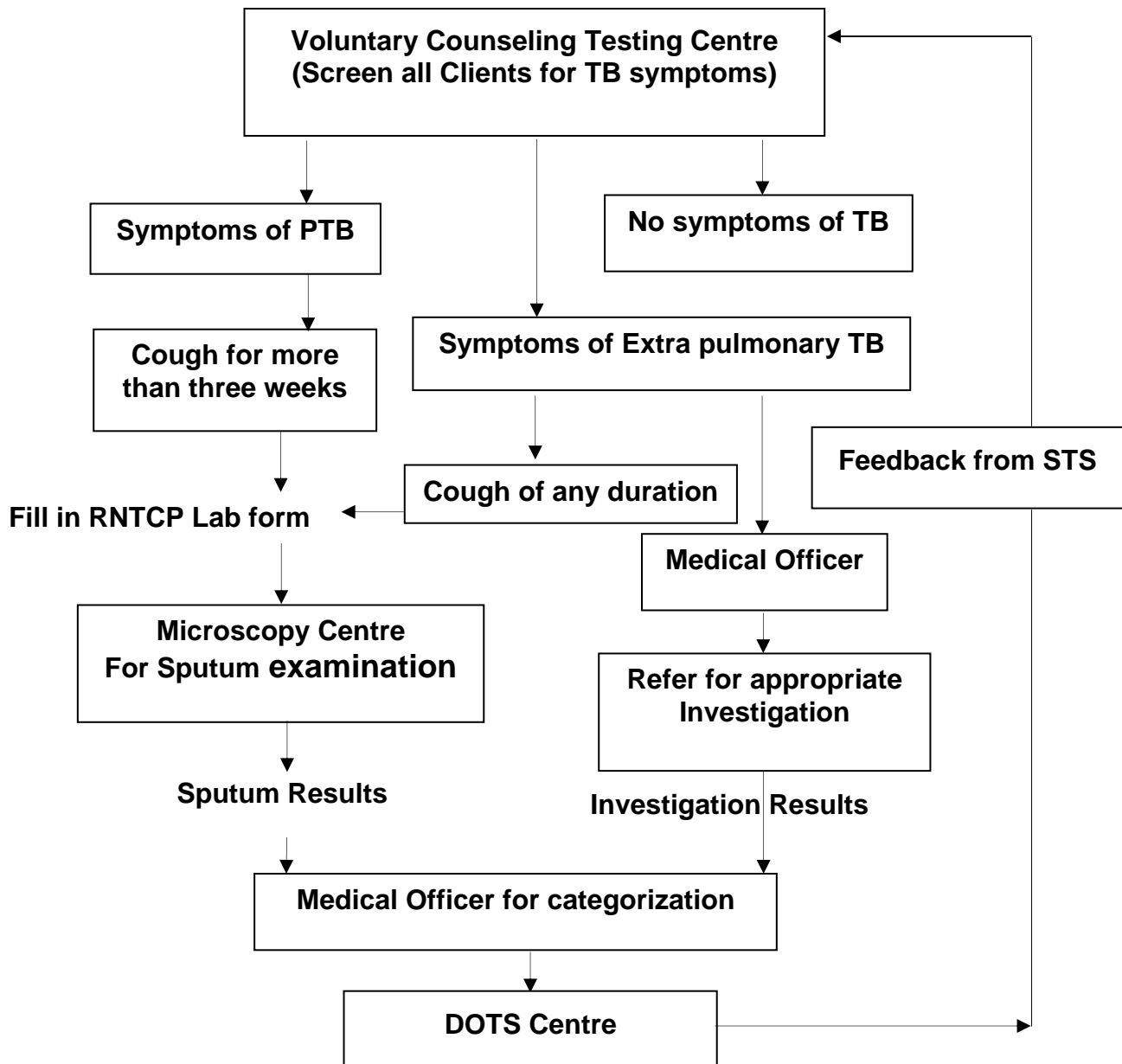
5 Cure rate and success rate are not expected for states that began implementing RNTCP after 3rd quarter 2004

**Referral of TB Suspects from VCTC to RNTCP diagnostic units, 3rd quarter 2005
(Reported by Phase-I States Implementing Joint TB-HIV Action Plan)**

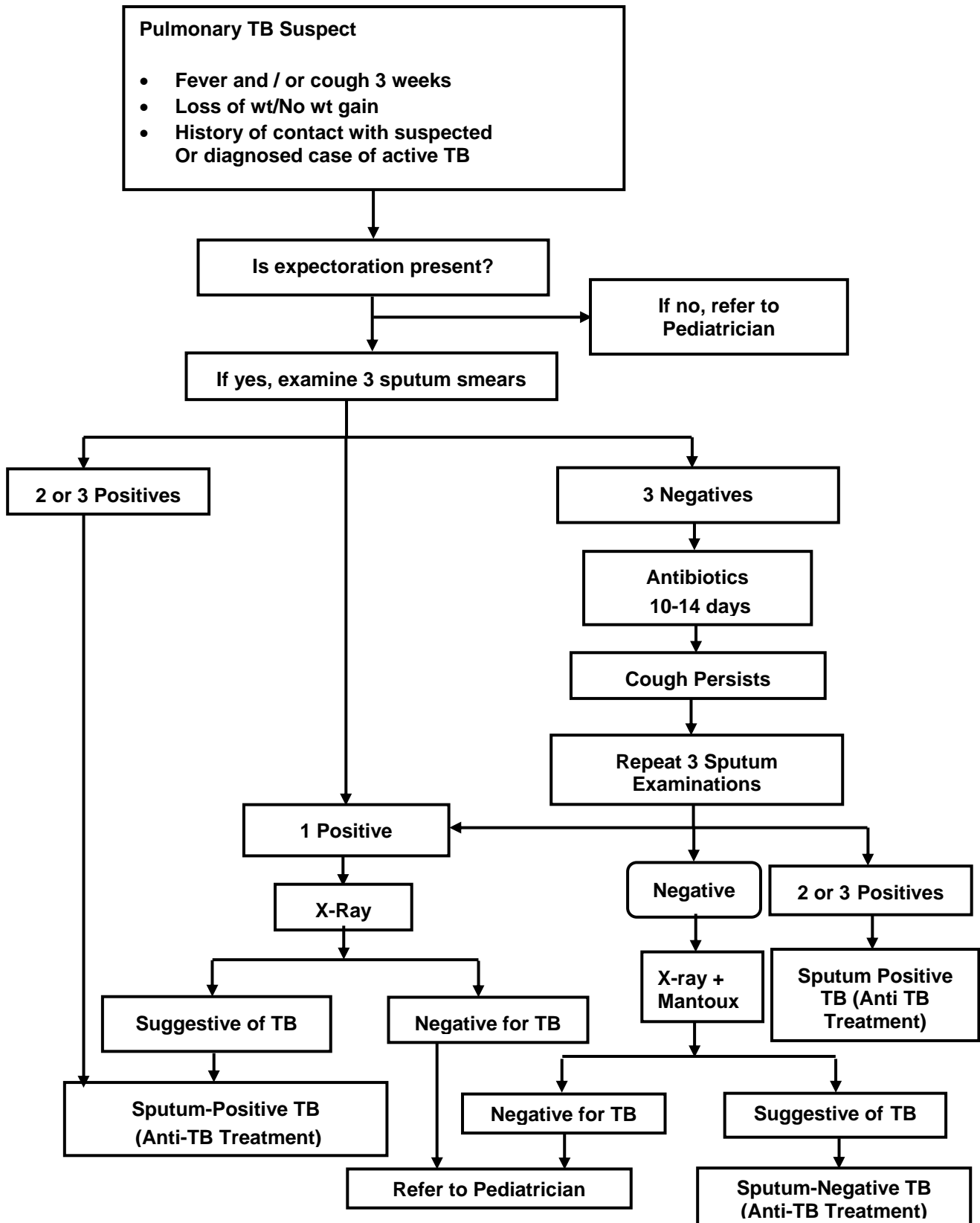
	Andhra Pradesh		Karnataka		Maharashtra		Manipur		Nagaland		Tamil Nadu		Total	
Total Population (In lakhs)	798		562		1050		27		24		648		3108	
Total No. of districts	24		28		48		9		8		29		146	
Population (In lakhs) of the districts having reported in 3rd quarter 2005	752		482		1017		13		2		635		2901	
No. of districts having reported in 3rd quarter 2005**	22		25		45		4		1		28		125	
	HIV Positive	HIV Negative	HIV Positive	HIV Negative	HIV Positive	HIV Negative	HIV Positive	HIV Negative	HIV Positive	HIV Negative	HIV Positive	HIV Negative	HIV Positive	HIV Negative
1. Number of TB suspects referred from VCTCs to RNTCP facilities¹	1134	852	313	448	732	609	22	6	0	1	918	541	3119	2457
2. Out of the above persons, number diagnosed as having TB:														
a) Sputum Positive TB	157	201	62	104	82	109	1	0	0	1	78	53	380	468
b) Sputum Negative TB	221	58	47	95	52	37	9	0	0	1	58	50	387	241
c) Extra-Pulmonary TB	12	10	20	15	20	14	1	0	0	0	26	4	79	43
d) Total diagnosed TB patients	390	269	129	214	154	160	11	0	0	2	162	107	846	752
3. Out of above total diagnosed TB patients (d), number receiving DOTS	160	211	86	129	115	131	7	0	0	1	114	63	482	535

¹ Includes TB suspects referred during 2nd quarter 2005

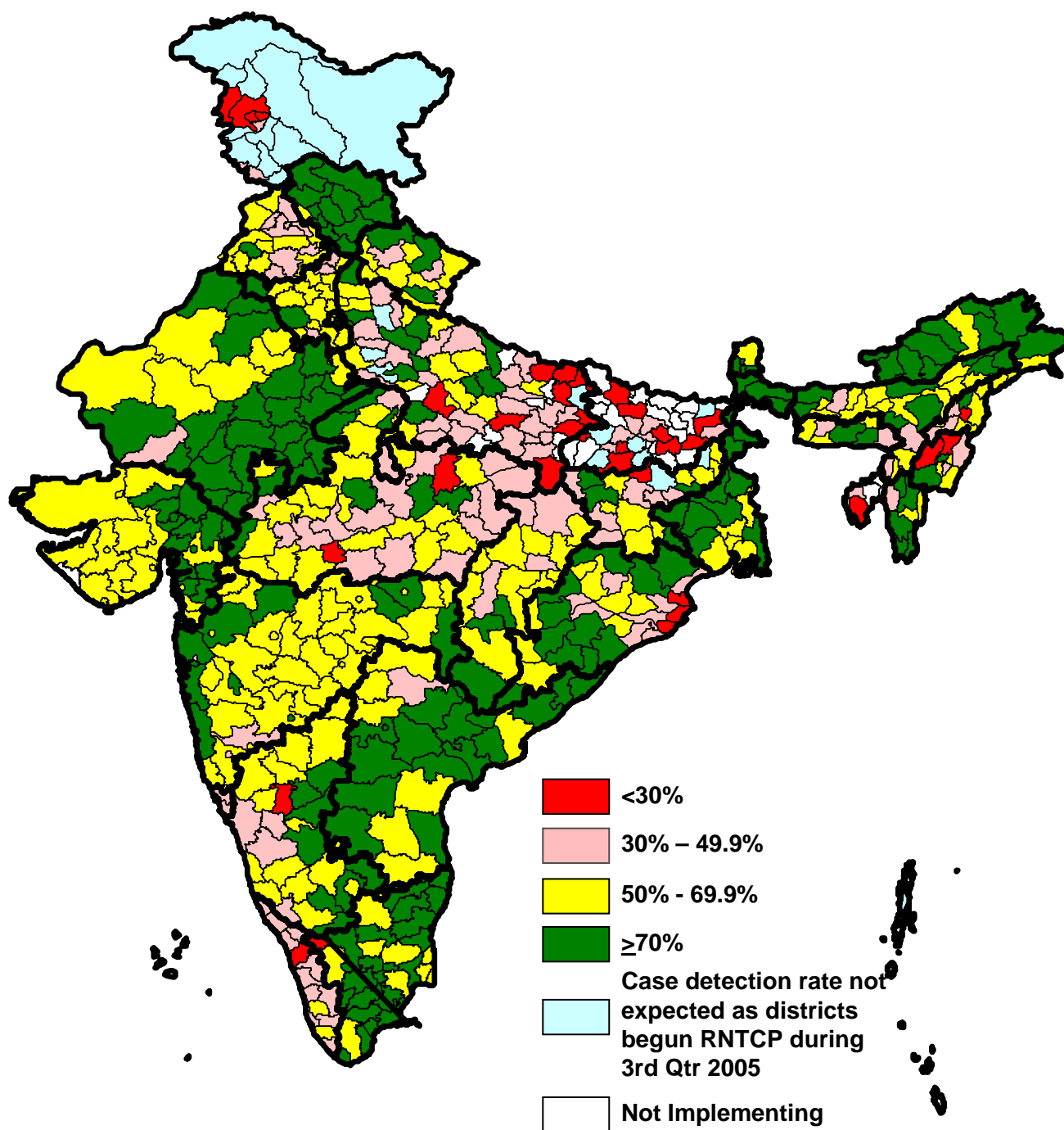
Referrals from VCTCs to RNTCP diagnostic and DOT Centres



Diagnostic Algorithm for Pediatric Pulmonary TB



New Smear Positive Case Detection Rate of India Third Quarter, 2005



Cure rate by district, India

Third Quarter, 2004

