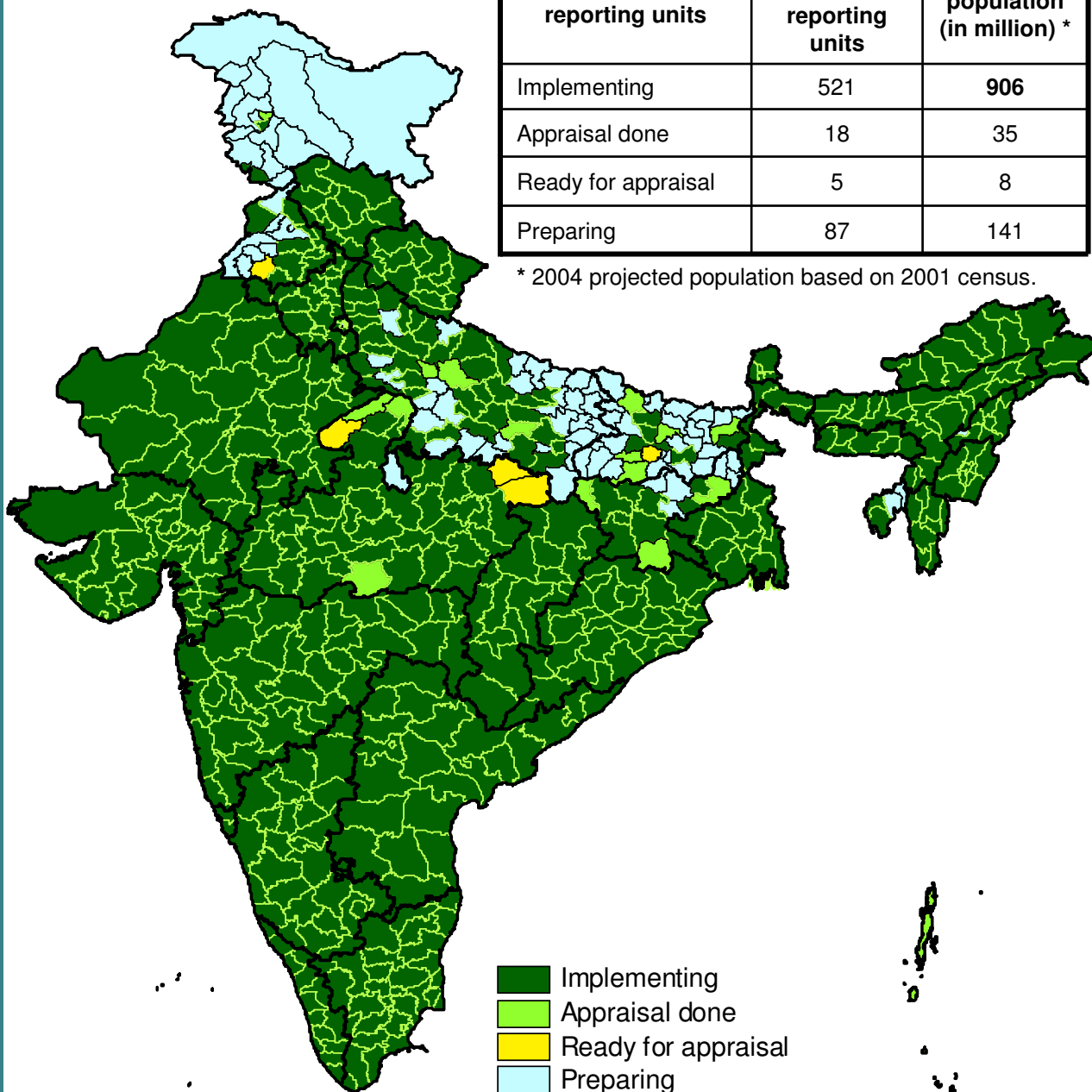


RNTCP Performance Report, India Third Quarter, 2004

District-wise RNTCP Implementation status

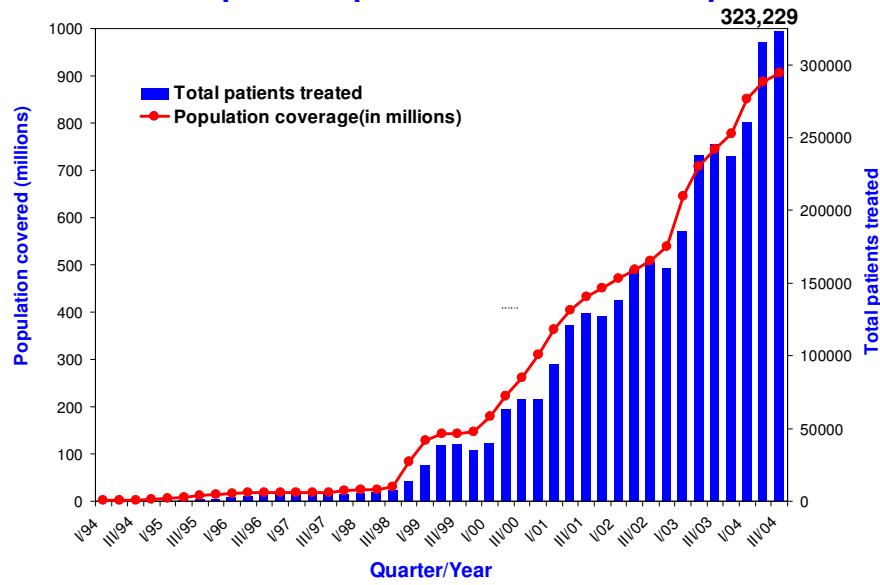
Type of districts / reporting units	No. of districts / reporting units	Projected population (in million) *
Implementing	521	906
Appraisal done	18	35
Ready for appraisal	5	8
Preparing	87	141

* 2004 projected population based on 2001 census.

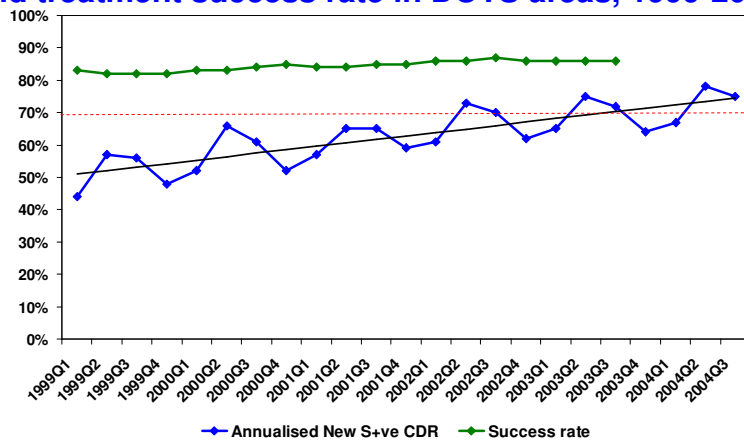


Central TB Division, Directorate General of Health Services
Ministry of Health and Family Welfare, Nirman Bhavan, New Delhi 110011
<http://www.tbcindia.org>

Population in India covered under DOTS and total tuberculosis patients put on treatment each quarter

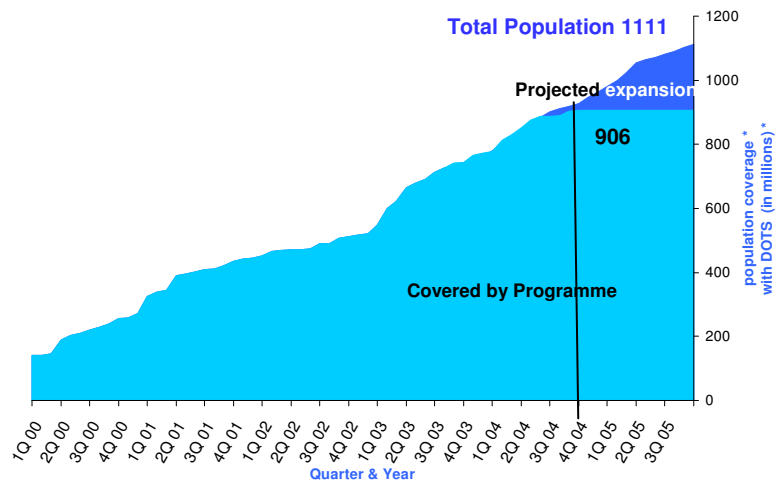


Annualized new smear-positive case detection rate and treatment success rate in DOTS areas, 1999-2004 *



*Estimated no. of NSP cases - 75/100,000 population per year (based on recent ARTI report)

Multiyear DOTS expansion plan for India * 30th September 2004



DOTS Expansion and other Achievements during the 3rd Quarter 2004

Dear Colleagues,

India has continued to expand DOTS in the third quarter of 2004 and significant achievements have been made during the 3rd quarter.

Expansion of RNTCP

By September 2004, the coverage had increased from 888 million in June 2004 to 906 million - an addition of 28 million in the three months. The RNTCP is now covering more than 84% of the country's population, with DOTS services now available to people in 521 Districts of 29 States and Union Territories.

Performance

The overall performance of the programme at the national level has continued to be good, and has shown an upward trend in many states and districts. The case detection rate for the quarter was **75%** with a total of 323,229 patients being placed on treatment. About 9 lakh patients have already been placed under RNTCP treatment during the current year. Success rate amongst the new smear positive cases registered in the 3rd quarter of 2003, was 86 %. The sputum conversion rate and cure among the new sputum positives was 89% and 85% respectively.

Supervision and Monitoring

A supervision and monitoring strategy with specific indicators to further improve the performance of RNTCP has been finalized after discussion in the STOs meeting of October 2004.

Internal Evaluation

During the quarter, 14 States and Union Territories (UT) conducted internal evaluations of 21 districts. These States and UT were Andhra Pradesh, Chandigarh, Chattisgarh, Delhi, Gujarat, Haryana, Himachal Pradesh, Karnataka, Kerala, Madhya Pradesh, Punjab, Rajasthan, Tamilnadu, and West Bengal. While the recommendations of some internal evaluation reports have been acted upon, there are many significant findings in the remaining reports, on which action is awaited.

Web-based Resource Centre for IEC

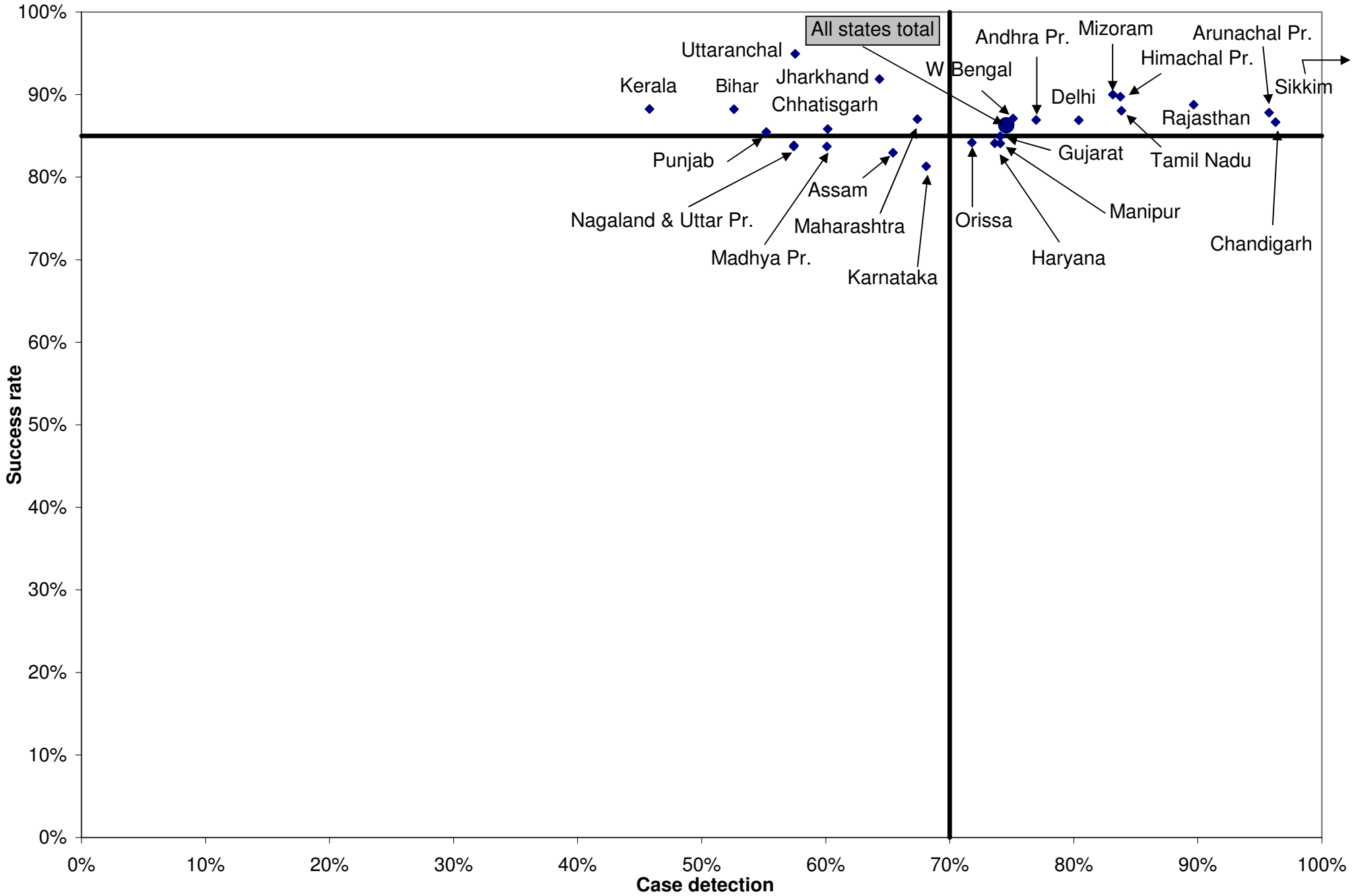
A web-based resource centre for IEC, developed with the help of DANIDA, has become operational during this quarter. The resource centre is available on the programme's web site: www.tbcindia.org and is being accessed by the states and districts.

Like in recent previous quarters, the performance of RNTCP during this quarter has been encouraging. The most notable progress made has been the finalization of the supervision and monitoring strategy with relevant indicators to improve the performance of RNTCP. While DOTS is expanding at a fast pace to cover the entire country by 2005, efforts are on to ensure quality of services through systematic and rigorous supervision and monitoring.

I am confident that with the committed and dedicated staff at district, state and national levels we will achieve the target of achieving full national coverage by 2005 and also ensure the quality of services.

Dr. L. S Chauhan, DDG (TB)
Directorate General of Health Services, MOHFW

Case-detection and treatment success rates in RNTCP areas for third quarter 2004/2003



Performance of RNTCP Case Detection (2004, third quarter), Smear Conversion (2004, second quarter), and Treatment Outcomes (2003, third quarter)

Implementing states	Population (in lakh) covered by RNTCP * (%)	No. of suspects examined	Suspects examined per lakh population	No of Smear positive patients diagnosed	% of S+ve cases among suspects	Percentage smear positive patients living in the district placed on DOTS	Total patients initiated on treatment	Annualized total case detection rate †	New smear positive patients initiated on treatment	Annualized new smear positive case detection rate (%) †	% sputum positive of total new pulmonary cases	3 month conversion rate of new smear positive patients§	Cure rate of new smear positive patients †	Success rate of new smear +ve patients †	No of new smear negative cases initiated on treatment	No of new EP cases initiated on treatment	% of new EP cases out of all new cases	No of smear positive retreatment cases initiated on treatment	% of retreatment cases out of all smear positive cases
Andhra Pradesh	787 (100)	115290	146	15383	13%	96%	27362	139	11363	58 (77)	53%	91%	85%	87%	9940	2074	9%	3433	23%
Arunachal Pradesh	12 (100)	3032	259	265	9%	94%	595	203	210	72 (96)	55%	95%	85%	88%	175	86	18%	91	30%
Assam	281 (100)	26025	93	5006	19%	91%	8752	122	3500	49 (65)	52%	79%	81%	83%	3189	558	8%	1006	22%
Bihar	158 (18)	13504	85	2035	15%	98%	4911	124	1562	39 (53)	39%	91%	86%	88%	2402	292	7%	346	18%
Chandigarh	10 (100)	3201	321	411	13%	94%	653	262	228	91 (96)	62%	90%	87%	87%	137	171	32%	79	26%
Chhatisgarh	219 (100)	23900	109	3131	13%	93%	6205	125	2410	48 (60)	47%	88%	85%	86%	2672	477	9%	452	16%
Delhi	159 (103)	38903	244	6289	16%	93%	11387	286	3046	76 (80)	54%	90%	86%	87%	2567	2889	34%	1726	36%
Goa	14 (100)	281	20	70	25%	67%	37		16		62%				10	5	16%	5	24%
Gujarat	538 (100)	86482	161	14598	17%	90%	20768	154	7964	59 (74)	63%	90%	85%	85%	4656	2125	14%	4426	36%
Haryana	227 (100)	39443	174	6628	17%	93%	9885	174	3971	70 (74)	63%	84%	84%	84%	2359	1275	17%	1887	32%
Himachal Pradesh	64 (100)	16463	258	1988	12%	95%	3548	222	1269	80 (84)	63%	92%	89%	90%	755	747	27%	663	34%
Jammu & Kashmir	37 (34)	2149	58	190	9%	90%	331	74	145	32 (34)	56%	86%			114	57	18%	14	9%
Jharkhand	177 (62)	16491	93	2933	18%	94%	5592	126	2134	48 (64)	48%	93%	91%	92%	2325	323	7%	618	22%
Karnataka	553 (100)	97390	176	11292	12%	93%	17587	129	6965	51 (68)	57%	87%	79%	81%	5239	2619	18%	2184	24%
Kerala	327 (100)	36280	172	3650	6%	95%	6366	78	2809	34 (46)	65%	89%	87%	88%	1483	1425	25%	510	15%
Madhya Pradesh	551 (85)	60447	110	10422	17%	90%	17827	134	6507	48 (60)	49%	86%	82%	84%	6822	1310	9%	2486	28%
Maharashtra	1028 (100)	159291	155	20080	13%	94%	36658	143	13863	54 (67)	54%	91%	86%	87%	11733	5218	17%	4096	23%
Manipur	26 (100)	4136	160	426	10%	100%	1436	222	359	56 (74)	41%	88%	84%	84%	519	252	22%	117	25%
Meghalaya	25 (100)	3069	123	839	27%	97%	1084	174	311	50 (66)	51%	84%			303	208	25%	143	31%
Mizoram	10 (100)	1486	154	168	11%	98%	575	239	150	62 (83)	44%	89%	89%	90%	193	155	31%	43	22%
Nagaland	20 (84)	1959	100	236	12%	90%	641	131	210	43 (57)	67%	91%	81%	84%	105	179	36%	83	28%
Orissa	377 (98)	46318	123	6693	14%	93%	11411	121	5077	54 (72)	60%	84%	80%	84%	3396	1562	16%	855	14%
Pondicherry	10 (100)	2298	223	278	12%	90%	393	153	175	68 (91)	66%	84%			91	56	17%	71	29%
Punjab	157 (61)	27396	175	3282	12%	93%	5458	139	2054	52 (55)	57%	86%	80%	85%	1580	951	21%	741	27%
Rajasthan	609 (100)	92015	151	18228	20%	93%	28932	190	10914	72 (90)	55%	91%	87%	89%	8956	2770	12%	5594	34%
Sikkim	6 (100)	1905	324	221	12%	96%	495	336	152	103 (138)	55%	88%	93%	93%	123	130	32%	53	26%
Tamil Nadu	641 (100)	160270	250	13799	9%	94%	25029	156	10080	63 (84)	55%	93%	88%	88%	8369	3963	18%	2158	18%
Tripura	24 (72)	1407	59	138	10%	100%	270		138		68%				66	19	9%	38	22%
Uttar Pradesh	1095 (62)	135994	124	21620	16%	88%	38809	142	14935	55 (57)	49%	89%	82%	84%	15810	3257	10%	4829	25%
Uttaranchal	89 (100)	14637	164	1955	13%	97%	2797	144	1064	55 (58)	55%	91%	95%	95%	865	268	12%	553	34%
West Bengal	843 (100)	133149	158	16017	12%	92%	27435	130	11868	56 (75)	61%	90%	86%	87%	7587	3058	14%	2873	19%
Grand Total	9073 (83)	1384611	153	188271	14%	92%	323229	144	125449	56 (75)	55%	89%	85%	86%	104541	38479	14%	42173	25%

NR - Not reported till 10th December 2004; Values for grey areas are not expected

* Projected population based on census population of 2001 is used for calculation of case-detection rate. 1 lakh = 100,000 population

Estimated New Smear Positive cases / lakh population based on ARTI data for North Zone (Chandigarh, Delhi, Haryana, Himachal Pradesh, Jammu & Kashmir, Punjab, Uttar Pradesh, Uttaranchal) is 95; East Zone (Andaman & Nicobar, Arunachal Pradesh, Assam, Bihar, Jharkhand, Manipur, Meghalaya, Mizoram, Nagaland, Sikkim, Tripura, West Bengal) is 75; South Zone (Andhra Pradesh, Karnataka, Kerala, Lakshdweep, Pondicherry, Tamil Nadu) is 75 and West Zone (Chhatisgarh, Dadra & Nagar Haveli, Daman & Diu, Goa, Gujarat, Madhya Pradesh, Maharashtra, Rajasthan) is 80; Orissa is 85

§ Smear conversion rate not expected for states that began implementing RNTCP during 3rd quarter 2004

† Cure rate and success rate are not expected for states that began implementing RNTCP after 3rd quarter of 2003

Treatment outcome of New cases for 3rd qtr 2003

Implementing states	New Smear Positive *						New Smear Negative #					New Extra Pulmonary #				
	Cure	Completed	Died	Failure	Defaulted	Trans out	Completed	Died	Failure	Defaulted	Trans out	Completed	Died	Failure	Defaulted	Trans out
Andhra Pradesh	85%	1.7%	5.8%	2.7%	4.2%	0.4%	88%	4.8%	1.0%	5.7%	0.3%	90%	4.5%	0.2%	4.9%	0.7%
Arunachal Pradesh	85%	2.9%	4.9%	1.0%	5.9%	0.5%	89%	2.8%	0.0%	7.1%	0.7%	80%	0.0%	2.0%	18.4%	0.0%
Assam	81%	2.4%	5.9%	2.3%	8.5%	0.4%	84%	4.9%	1.0%	9.1%	0.7%	93%	1.9%	0.0%	4.6%	0.4%
Bihar	86%	2.5%	3.9%	1.0%	6.5%	0.3%	93%	1.8%	0.2%	4.9%	0.0%	92%	0.0%	0.7%	7.4%	0.0%
Chandigarh	87%	0.0%	3.6%	6.7%	1.8%	1.2%	85%	1.1%	3.3%	8.7%	2.2%	96%	1.6%	0.0%	1.6%	0.8%
Chhatisgarh	85%	1.3%	4.4%	2.3%	7.1%	0.4%	87%	4.1%	0.0%	8.5%	0.3%	92%	2.6%	0.0%	5.1%	0.4%
Delhi	86%	0.5%	2.0%	3.5%	6.4%	1.2%	92%	1.5%	0.9%	5.2%	0.5%	96%	0.6%	0.1%	3.0%	0.2%
Goa																
Gujarat	85%	0.3%	5.3%	3.4%	5.9%	0.5%	85%	3.8%	1.6%	9.1%	0.6%	90%	2.4%	0.2%	7.0%	0.4%
Haryana	84%	0.6%	3.9%	2.2%	9.6%	0.2%	81%	4.4%	1.5%	12.6%	0.1%	91%	1.4%	0.2%	7.1%	0.0%
Himachal Pradesh	89%	0.6%	3.3%	2.1%	4.7%	0.1%	88%	4.8%	1.0%	6.3%	0.1%	90%	6.0%	0.3%	3.7%	0.1%
Jammu & Kashmir																
Jharkhand	91%	0.8%	3.0%	0.5%	4.6%	0.0%	92%	2.1%	0.6%	5.1%	0.0%	96%	1.4%	0.0%	2.1%	0.7%
Karnataka	79%	1.9%	5.7%	2.9%	9.8%	0.2%	82%	6.2%	1.4%	10.0%	0.2%	90%	3.9%	0.2%	6.1%	0.2%
Kerala	87%	1.1%	4.1%	3.0%	4.4%	0.2%	90%	4.8%	0.5%	4.6%	0.1%	93%	2.2%	0.2%	3.2%	0.1%
Madhya Pradesh	82%	1.6%	5.5%	3.4%	7.2%	0.3%	87%	4.3%	1.0%	7.7%	0.1%	91%	2.7%	0.1%	5.9%	0.5%
Maharashtra	86%	0.8%	5.2%	2.6%	4.6%	0.5%	88%	4.3%	1.1%	5.9%	0.4%	91%	3.2%	0.3%	4.9%	0.4%
Manipur	84%	0.3%	5.9%	1.5%	8.3%	0.3%	87%	2.8%	0.0%	9.5%	0.3%	89%	3.9%	0.0%	7.0%	0.0%
Meghalaya																
Mizoram	89%	0.9%	2.7%	2.7%	3.6%	0.9%	85%	8.9%	0.5%	4.2%	1.1%	94%	3.2%	0.0%	3.2%	0.0%
Nagaland	81%	2.2%	1.7%	6.2%	8.4%	0.0%	61%	2.7%	16.8%	19.5%	0.0%	69%	4.5%	5.6%	21.3%	0.0%
Orissa	80%	4.6%	6.0%	1.1%	8.5%	0.2%	88%	4.4%	0.4%	7.2%	0.1%	89%	3.1%	0.1%	7.6%	0.1%
Pondicherry																
Punjab	80%	5.6%	4.7%	2.0%	7.2%	0.7%	90%	3.0%	1.3%	5.9%	0.3%	93%	2.3%	0.0%	3.3%	0.9%
Rajasthan	87%	1.4%	3.2%	1.6%	6.4%	0.0%	88%	2.7%	0.9%	7.4%	0.1%	92%	1.6%	0.1%	5.4%	0.2%
Sikkim	93%	0.0%	3.1%	2.0%	1.0%	0.0%	92%	4.8%	1.9%	1.0%	0.0%	94%	2.1%	1.1%	3.2%	0.0%
Tamil Nadu	88%	0.2%	4.6%	1.9%	5.2%	0.3%	90%	4.1%	0.6%	5.5%	0.3%	93%	3.1%	0.1%	3.4%	0.2%
Tripura																
Uttar Pradesh	82%	2.0%	4.9%	2.1%	9.0%	0.1%	89%	2.8%	1.0%	7.4%	0.0%	94%	1.1%	0.1%	4.7%	0.0%
Uttaranchal	95%	0.0%	1.8%	0.5%	2.8%	0.0%	95%	4.1%	0.0%	1.0%	0.0%	99%	1.1%	0.0%	0.0%	0.0%
West Bengal	86%	0.7%	3.9%	2.4%	6.3%	0.2%	88%	4.0%	0.8%	7.4%	0.2%	93%	2.9%	0.1%	4.0%	0.2%
Grand Total	85%	1.3%	4.7%	2.4%	6.3%	0.3%	88%	4.0%	1.0%	6.9%	0.2%	92%	2.6%	0.2%	4.8%	0.3%

* - Treatment success for New Smear Positive is cured and treatment completed.

- Treatment success for New Smear Negative and New Extra Pulmonary are treatment completed.

**Outcome of Smear Positive Retreatment cases for India,
3rd qtr 2003 (excluding "Others")**

Type of retreatment case	Cured	Success	Died	Failure	Defaulted	Transferred out	No. registered
Relapse	71%	75%	7%	6%	12%	0.5%	12803
Failure	57%	60%	10%	14%	16%	0.3%	3290
Treatment after default	64%	69%	7%	5%	18%	0.6%	14861
Total	66%	70%	7%	6%	16%	0.6%	30954

**State-wise outcome of Smear Positive Retreatment cases
for 3rd qtr 2003, (excluding "Others")**

Implementing states	Cured	Success	Died	Failure	Defaulted	Transferred out	No. registered
Andhra Pradesh	66%	71%	9%	7%	13%	0.7%	2198
Arunachal Pradesh	79%	80%	1%	9%	9%	0.0%	75
Assam	64%	71%	9%	4%	16%	0.0%	428
Bihar	68%	79%	8%	2%	11%	0.0%	209
Chandigarh	77%	79%	7%	7%	5%	1.8%	57
Chhatisgarh	66%	73%	6%	7%	13%	1.0%	196
Delhi	68%	69%	7%	9%	14%	1.4%	1402
Goa							
Gujarat	59%	63%	7%	7%	22%	1.0%	3613
Haryana	57%	63%	7%	6%	23%	0.4%	527
Himachal Pradesh	74%	78%	8%	6%	8%	0.4%	556
Jammu & Kashmir							
Jharkhand	79%	81%	6%	1%	11%	1.0%	193
Karnataka	59%	64%	8%	6%	22%	0.3%	1740
Kerala	65%	69%	4%	10%	16%	1.3%	462
Madhya Pradesh	66%	70%	10%	7%	13%	0.2%	1345
Maharashtra	62%	66%	9%	7%	17%	1.2%	3779
Manipur	64%	64%	10%	7%	19%	0.0%	89
Meghalaya							
Mizoram	45%	62%	9%	9%	19%	1.7%	58
Nagaland	71%	73%	3%	16%	6%	1.3%	79
Orissa	64%	69%	11%	3%	17%	0.2%	413
Pondicherry							
Punjab	65%	77%	7%	4%	11%	0.9%	581
Rajasthan	74%	78%	6%	3%	13%	0.0%	5288
Sikkim	68%	70%	8%	19%	3%	0.0%	37
Tamil Nadu	63%	65%	7%	7%	20%	0.7%	1937
Tripura							
Uttar Pradesh	71%	74%	7%	5%	14%	0.1%	3119
Uttaranchal	75%	75%	9%	10%	6%	0.0%	93
West Bengal	69%	71%	6%	6%	15%	0.4%	2480
Grand Total	66%	70%	7%	6%	16%	0.6%	30954

Programme infrastructure, Staffing and Drugs for 3rd qtr 2004

Implementing states	Total no. of Districts / DTC	Implementing district details			Involvement of Other sectors			Number of key staff in position						% of districts with less than 1 month of drug stock at the end of the quarter		
		No. of districts / DTC	No. of TUs'	No. of MCs'	NGO *	PP *	Medical College	DTO	2nd MO	MO-TC	STS	STLS	LT	Cat I Patient Wise Box	Cat II Patient Wise Box	Cat III Patient Wise Box
Andhra Pradesh	24	24	164	878	39	72	12	21	20	149	143	154	767	0%	4%	0%
Arunachal Pradesh	6	6	14	26	0	0	0	6	2	12	13	13	20	17%	0%	0%
Assam	23	23	61	312	19	48	2	23	13	50	61	61	328	13%	4%	9%
Bihar	38	5	27	103	36	33	5	5	4	26	26	23	116	0%	0%	20%
Chandigarh	1	1	2	13	9	145	2	1	1	2	3	4	8	0%	0%	0%
Chhatisgarh	16	16	62	281	8	87	1	16	2	61	60	60	270	6%	0%	13%
Delhi	21	21	31	159	70	34	5	21	27	28	35	30	149	5%	0%	5%
Goa	2	2	3	18	0	0	1	2	0	3	3	3	22	0%	0%	0%
Gujarat	27	27	119	600	93	862	10	19	28	115	114	117	513	0%	0%	0%
Haryana	19	19	45	202	30	145	2	18	14	43	46	45	212	0%	0%	0%
Himachal Pradesh	12	12	38	161	12	29	1	12	11	38	36	34	157	8%	0%	0%
Jammu & Kashmir	14	3	11	42	0	1	6	3	4	11	11	11	41	0%	0%	0%
Jharkhand	22	10	33	172	7	0	1	10	8	30	30	29	105	10%	10%	0%
Karnataka	28	28	114	602	94	485	28	26	8	105	108	115	599	0%	4%	0%
Kerala	14	14	68	490	43	350	9	12	13	65	65	65	357	0%	0%	21%
Madhya Pradesh	45	39	121	609	10	47	3	39	13	115	117	139	518	3%	5%	3%
Maharashtra	48	48	201	1071	104	758	37	47	51	195	194	198	895	2%	4%	6%
Manipur	9	9	9	45	42	2	1	9	2	1	9	13	45	44%	22%	44%
Meghalaya	5	5	10	45	8	7	0	5	4	10	10	10	60	20%	0%	0%
Mizoram	8	8	9	26	0	0	0	8	2	7	9	9	32	0%	0%	13%
Nagaland	8	7	7	28	0	0	0	6	4	6	7	7	27	0%	0%	14%
Orissa	31	30	85	517	17	1	3	27	13	56	78	66	503	7%	3%	0%
Pondicherry	1	1	4	11	0	0	5	1	1	4	4	4	11	0%	0%	0%
Punjab	17	9	30	178	19	98	5	9	5	27	26	28	176	0%	0%	0%
Rajasthan	32	32	142	694	85	81	7	31	20	133	136	144	672	0%	0%	9%
Sikkim	4	4	5	18	9	16	1	4	0	5	5	5	22	0%	0%	0%
Tamil Nadu	29	29	138	716	128	310	19	28	26	116	132	140	587	3%	3%	7%
Tripura	4	2	5	33	0	0	0	2	2	5	5	5	27	0%	0%	0%
Uttar Pradesh	70	37	194	792	27	149	12	30	40	175	179	177	523	0%	0%	0%
Uttaranchal	13	13	30	139	6	3	2	13	12	28	29	30	135	8%	15%	15%
West Bengal	19	19	174	855	69	206	9	17	17	156	169	170	935	0%	0%	0%
Grand Total	610	503	1956	9836	984	3969	189	471	367	1777	1863	1909	8832	3%	3%	5%

* - Number of NGO's and PP's exclude all unsigned involvement

Performance of RNTCP Case Detection (2004, third quarter), Smear Conversion (2004, second quarter) and Treatment Outcomes (2003, third quarter)

State	District	Population (in lakh) covered by RNTCP *	No. of suspects examined	Suspects examined per lakh population	No of Smear positive patients diagnosed	% of S+ve cases among suspects	Percentage smear positive patients living in the district placed on DOTS	Total patients initiated on treatment	Annualized total case detection rate †	New smear positive patients initiated on treatment	Annualized new smear positive case detection rate (%) †	% new sputum positive out of total new pulmonary cases	3 month conversion rate of new smear positive patients §	Cure rate of new smear positive patients ¶	Success rate of new smear positive patients ¶
Andhra Pradesh	Adilabad	26	1835	71	357	19%	94%	649	101	357	55 74%	64%	92%	64%	70%
Andhra Pradesh	Anantapur	38	6990	185	870	12%	95%	1293	137	590	62 83%	60%	91%	85%	86%
Andhra Pradesh	Bhadrachalam	8	2968	366	341	11%	100%	418	206	210	104 138%	73%	89%		
Andhra Pradesh	Chittoor	39	6317	163	738	12%	95%	1118	115	455	47 62%	54%	92%	85%	86%
Andhra Pradesh	Cuddapah	27	3083	115	448	15%	95%	1166	174	394	59 79%	43%	90%	85%	85%
Andhra Pradesh	East Godavari	51	6672	132	781	12%	94%	1561	123	509	40 54%	45%	92%	85%	85%
Andhra Pradesh	Guntur	46	8150	178	995	12%	99%	1770	155	661	58 77%	50%	92%	87%	89%
Andhra Pradesh	Hyderabad	38	6105	159	1170	19%	94%	1461	152	612	64 85%	61%	97%	89%	89%
Andhra Pradesh	Karimnagar	36	3020	84	584	19%	99%	866	96	370	41 55%	59%	83%		
Andhra Pradesh	Khammam	19	3151	170	503	16%	100%	781	168	338	73 97%	55%	93%	87%	90%
Andhra Pradesh	Krishna	44	6789	155	987	15%	86%	1342	122	534	49 65%	53%	93%	86%	86%
Andhra Pradesh	Kurnool	37	4276	117	662	15%	76%	1411	155	524	57 77%	45%	93%	78%	79%
Andhra Pradesh	Mahbubnagar	36	3158	87	617	20%	100%	1094	120	497	55 73%	53%	87%	81%	83%
Andhra Pradesh	Medak	28	5564	201	332	6%	100%	784	113	332	48 64%	56%	96%	89%	91%
Andhra Pradesh	Nalgonda	34	6841	203	896	13%	100%	1352	161	625	74 99%	61%	90%		
Andhra Pradesh	Nellore	28	3677	133	527	14%	96%	1080	156	460	67 89%	59%	92%	86%	88%
Andhra Pradesh	Nizamabad	24	3112	128	375	12%	91%	737	121	318	52 70%	48%	93%	86%	88%
Andhra Pradesh	Prakasam	32	3714	117	449	12%	100%	1075	135	449	57 75%	50%	95%	85%	90%
Andhra Pradesh	Rangareddi	36	4474	123	635	14%	95%	1142	125	483	53 71%	55%	90%	86%	88%
Andhra Pradesh	Srikakulam	26	4243	161	489	12%	100%	1130	172	458	70 93%	47%	92%	93%	94%
Andhra Pradesh	Visakhapatnam	39	5915	150	611	10%	100%	1356	138	611	62 83%	54%	95%	89%	89%
Andhra Pradesh	Vizianagaram	23	4991	214	409	8%	100%	1021	175	409	70 93%	54%	93%	88%	89%
Andhra Pradesh	Warangal	34	3343	100	741	22%	100%	1263	150	509	61 81%	50%	77%	78%	86%
Andhra Pradesh	West Godavari	39	6902	175	866	13%	96%	1492	151	658	67 89%	56%	94%	87%	87%
Arunachal Pradesh	Along DTC	1.1	168	151	17	10%	100%	38	137	17	61 82%	71%	100%	73%	73%
Arunachal Pradesh	Bomdila DTC	1.8	523	293	60	11%	100%	98	220	48	108 144%	71%	97%	88%	93%
Arunachal Pradesh	Deomali DTC	2.4	458	190	51	11%	90%	103	171	35	58 77%	52%	96%	76%	82%
Arunachal Pradesh	Pasighat DTC	1.3	269	208	30	11%	100%	67	207	30	93 124%	67%	96%	95%	95%
Arunachal Pradesh	Tezu DTC	2.2	466	216	34	7%	100%	84	156	34	63 84%	64%	95%	89%	89%
Arunachal Pradesh	Ziro DTC	2.9	1148	390	73	6%	81%	205	279	46	63 83%	36%	90%	78%	83%
Assam	Barpeta	17	1199	69	187	16%	100%	388	90	129	30 40%	46%	88%	82%	85%
Assam	Bongaigaon	10	815	85	176	22%	93%	325	136	128	54 72%	51%	72%		
Assam	Cachar	15	1049	69	182	17%	66%	303	80	93	24 33%	40%	79%	66%	70%
Assam	Darrang	16	1497	95	238	16%	96%	513	130	178	45 60%	44%	74%		
Assam	Dhemaji	6	126	21	123	98%	100%	156	104	80	53 71%	58%	70%		
Assam	Dhubri	17	1183	69	340	29%	71%	480	112	230	53 71%	59%	65%		
Assam	Dibrugarh	12	1978	160	337	17%	94%	572	185	233	76 101%	64%	87%	84%	85%
Assam	Goalpara	9	167	19	167	100%	93%	266	123	138	64 85%	59%	74%		
Assam	Golaghat	10	1126	113	163	14%	82%	323	130	105	42 56%	44%	70%		
Assam	Hailakandi	6	599	105	71	12%	100%	147	103	54	38 50%	49%	39%		
Assam	Jorhat	11	1260	119	201	16%	99%	343	129	145	55 73%	59%	86%	80%	87%
Assam	Kamrup	26	3289	124	478	15%	96%	854	129	274	41 55%	53%	81%	76%	80%
Assam	Karbi Anglong	9	1201	140	235	20%	98%	464		163		46%			

Performance of RNTCP Case Detection (2004, third quarter), Smear Conversion (2004, second quarter) and Treatment Outcomes (2003, third quarter)

State	District	Population (in lakh) covered by RNTCP *	No. of suspects examined	Suspects examined per lakh population	No of Smear positive patients diagnosed	% of S-ve cases among suspects	Percentage smear positive patients living in the district placed on DOTS	Total patients initiated on treatment	Annualized total case detection rate †	New smear positive patients initiated on treatment	Annualized new smear positive case detection rate (%) †	% new sputum positive out of total new pulmonary cases	3 month conversion rate of new smear positive patients §	Cure rate of new smear positive patients ¶	Success rate of new smear positive patients ¶
Assam	Karimganj	11	1194	113	176	15%	84%	346	131	133	50 67%	42%	60%		
Assam	Kokrajhar	10	985	101	191	19%	100%	378	154	178	73 97%	49%	68%		
Assam	Lakhimpur	9	910	97	162	18%	101%	328	140	124	53 71%	50%	96%	83%	83%
Assam	Marigaon	8	785	96	136	17%	100%	259	127	101	49 66%	47%	86%		
Assam	Nagaon	24	1931	79	464	24%	88%	630	103	336	55 73%	63%	84%		
Assam	Nalbari	12	825	69	236	29%	76%	400	133	186	62 83%	59%	80%		
Assam	North Cachar Hills	2.0	358	183	38	11%	97%	62	126	27	55 73%	53%	86%	93%	93%
Assam	Sibsagar	11	696	63	151	22%	88%	199	72	70	25 34%	69%	84%		
Assam	Sonitpur	18	1732	98	338	20%	96%	687	156	241	55 73%	44%	89%	86%	86%
Assam	Tinsukia	12	1120	92	216	19%	93%	329	109	154	51 68%	64%	77%		
Bihar	Katihar	26	1775	69	281	16%	100%	512	80	260	40 54%	57%	89%		
Bihar	Munger	12	1043	85	126	12%	89%	452	148	78	25 34%	22%	73%		
Bihar	Muzaffarpur	40	2513	62	488	19%	100%	1275	126	402	40 53%	37%	90%	85%	89%
Bihar	Patna	51	6010	118	815	14%	99%	1728	136	570	45 60%	42%	93%	85%	87%
Bihar	Vaishali	29	2163	74	325	15%	97%	944	129	252	34 46%	36%	90%	88%	88%
Chandigarh	Chandigarh	10	3201	321	411	13%	94%	653	262	228	91 96%	62%	90%	87%	87%
Chhatisgarh	Bastar	14	1315	96	258	20%	94%	532	155	196	57 72%	50%	84%		
Chhatisgarh	Bilaspur-CG	21	2680	128	312	12%	99%	672	128	262	50 63%	47%	93%	90%	91%
Chhatisgarh	Dantewada	8	1551	205	207	13%	64%	140		86		88%			
Chhatisgarh	Dhamtari	7	798	108	110	14%	97%	162	88	80	43 54%	69%	83%		
Chhatisgarh	Durg	29	3114	106	409	13%	91%	837	114	308	42 52%	43%	90%	80%	83%
Chhatisgarh	Janjgir	14	1438	104	192	13%	91%	422	122	163	47 59%	41%	94%		
Chhatisgarh	Jashpur	8	756	97	77	10%	94%	157	81	62	32 40%	48%	85%		
Chhatisgarh	Kanker	7	1360	199	104	8%	96%	222	130	84	49 61%	48%	90%		
Chhatisgarh	Kawardha	6	695	113	95	14%	97%	230	150	76	49 62%	40%	75%		
Chhatisgarh	Korba	11	1249	117	149	12%	92%	230	86	116	44 55%	64%	83%		
Chhatisgarh	Koriya	6	456	74	79	17%	94%	148		48		42%			
Chhatisgarh	Mahasamund	9	825	91	122	15%	90%	202	89	102	45 56%	60%	89%		
Chhatisgarh	Raigarh-CG	13	1355	102	265	20%	98%	572	172	219	66 82%	45%	87%		
Chhatisgarh	Raipur	32	4174	132	473	11%	98%	1045	132	385	49 61%	43%	90%	86%	86%
Chhatisgarh	Rajnandgaon	13	1418	105	202	14%	97%	452	134	163	48 60%	51%	85%	80%	82%
Chhatisgarh	Surguja	21	716	35	77	11%	78%	182		60		39%			
Delhi	BJRM Chest Clinic	3	1332	397	217	16%	85%	367	437	98	117 123%	57%	90%	90%	90%
Delhi	DDU Chest Clinic	8	2802	358	491	18%	89%	1277	652	292	149 157%	46%	89%	87%	87%
Delhi	GTB Chest Clinic	9	1729	193	360	21%	90%	421	188	128	57 60%	77%	92%	86%	86%
Delhi	Gulabi Bagh	10	1989	197	319	16%	75%	382	152	106	42 44%	55%	94%	87%	87%
Delhi	Hedgewar C Clinic	5	1731	346	229	13%	85%	582	466	123	98 104%	44%	89%		
Delhi	Jhandewalan	6	1041	186	163	16%	90%	277	198	57	41 43%	47%	91%	84%	84%
Delhi	Karawal Nagar	10	1485	147	380	26%	99%	822	326	244	97 102%	62%	87%	82%	82%
Delhi	Kingsway	4	1818	406	266	15%	101%	324	289	87	78 82%	47%	95%	90%	90%
Delhi	LN Chest Clinic	3	1008	300	126	13%	100%	119	142	35	42 44%	70%	92%	94%	94%
Delhi	LRS	18	5712	319	588	10%	99%	1085	242	292	65 69%	58%	91%	89%	89%
Delhi	Moti Nagar	6	1251	223	188	15%	83%	383	274	87	62 65%	51%	92%	87%	87%

Performance of RNTCP Case Detection (2004, third quarter), Smear Conversion (2004, second quarter) and Treatment Outcomes (2003, third quarter)

State	District	Population (in lakh) covered by RNTCP *	No. of suspects examined	Suspects examined per lakh population	No of Smear positive patients diagnosed	% of S-ve cases among suspects	Percentage smear positive patients living in the district placed on DOTS	Total patients initiated on treatment	Annualized total case detection rate †	New smear positive patients initiated on treatment	Annualized new smear positive case detection rate (%) †	% new sputum positive out of total new pulmonary cases	3 month conversion rate of new smear positive patients §	Cure rate of new smear positive patients ¶	Success rate of new smear positive patients ¶
Delhi	Narela	6	1521	272	236	16%	89%	346	247	107	76 80%	49%	88%	87%	87%
Delhi	NDMC	4	1245	278	192	15%	96%	202	180	69	62 65%	70%	84%	91%	91%
Delhi	NDTC	2	648	289	85	13%	92%	177	316	36	64 68%	53%	90%	85%	85%
Delhi	Nehru Nagar	20	2684	133	442	16%	100%	925	184	264	52 55%	55%	88%	80%	80%
Delhi	Patparganj	8	2075	265	408	20%	85%	621	317	179	91 96%	59%	91%	83%	85%
Delhi	RK Mission	9	286	32	286	100%	88%	388	173	132	59 62%	60%	83%	95%	95%
Delhi	RTRM Chest Clinic	4	1723	385	215	12%	96%	410	366	121	108 114%	60%	92%	90%	90%
Delhi	SGM Chest Clinic	9	3636	406	555	15%	100%	1293	577	322	144 151%	50%	93%	88%	88%
Delhi	Shahadra	9	2151	240	341	16%	97%	631	282	150	67 71%	49%	89%	81%	85%
Delhi	SPM Marg	6	1036	185	202	19%	101%	355	254	117	84 88%	60%	92%	91%	91%
Goa	Noth Goa	8	175	22	50	29%	55%	21		7		54%			
Goa	South Goa	6	106	17	20	19%	95%	16		9		69%			
Gujarat	Ahmadabad	24	2862	117	519	18%	90%	840	138	305	50 63%	57%	91%	87%	87%
Gujarat	AMC	37	8011	214	1469	18%	85%	2092	224	570	61 76%	62%	87%	83%	83%
Gujarat	Amreli	15	2569	174	275	11%	87%	350	95	168	45 57%	79%	92%	84%	85%
Gujarat	Anand	20	2945	149	575	20%	95%	834	169	326	66 83%	63%	95%	87%	87%
Gujarat	Banas Kantha	27	3642	137	676	19%	89%	1249	188	374	56 70%	49%	90%	84%	84%
Gujarat	Bharuch	20	2724	136	463	17%	89%	697	139	322	64 80%	66%	91%	77%	77%
Gujarat	Bhavnagar	26	3769	144	845	22%	86%	1047	160	343	52 65%	64%	89%	86%	86%
Gujarat	Chhota Udepur	10	1210	125	216	18%	83%	290	120	134	55 69%	73%	89%		
Gujarat	Dahod	17	4689	270	765	16%	89%	983	226	450	104 129%	75%	93%	84%	84%
Gujarat	Gandhinagar	14	2317	163	454	20%	78%	522	147	202	57 71%	64%	90%	87%	88%
Gujarat	Jamnagar	20	3401	167	400	12%	96%	633	125	227	45 56%	64%	88%	88%	90%
Gujarat	Junagadh	32	4556	144	587	13%	94%	931	117	363	46 57%	61%	90%	85%	85%
Gujarat	Kachchh	16	1720	106	371	22%	93%	381	94	141	35 43%	71%	71%		
Gujarat	Kheda	22	2676	124	628	23%	91%	884	164	357	66 83%	71%	90%	85%	85%
Gujarat	Mahesana	20	3309	169	519	16%	95%	828	170	370	76 95%	64%	93%	88%	88%
Gujarat	Panch Mahals	22	2995	139	849	28%	95%	1316	245	531	99 123%	60%	91%	80%	80%
Gujarat	Patan	13	2651	211	411	16%	89%	504	160	183	58 73%	57%	90%	85%	85%
Gujarat	Rajkot	34	5233	156	574	11%	96%	798	95	313	37 47%	60%	90%	85%	87%
Gujarat	Sabar Kantha	22	4313	195	809	19%	84%	990	179	375	68 85%	58%	93%	83%	83%
Gujarat	Surat	16	2431	151	414	17%	88%	550	137	230	57 71%	65%	88%	75%	77%
Gujarat	Surat Municipal Corp	26	4639	179	557	12%	88%	898	139	321	50 62%	68%	90%	87%	87%
Gujarat	Surendranagar	16	2950	183	461	16%	89%	533	132	239	59 74%	69%	92%	87%	87%
Gujarat	The Dangs	2.0	385	194	51	13%	93%	65	131	36	73 91%	69%	95%	100%	100%
Gujarat	Vadodara	15	1780	118	279	16%	88%	533	141	242	64 80%	65%	90%	84%	86%
Gujarat	Vadodara Corp	14	2201	159	467	21%	93%	563	162	214	62 77%	66%	92%	86%	86%
Gujarat	Valsad	28	4467	159	631	14%	89%	883	126	420	60 75%	69%	91%	89%	89%
Gujarat	Vyara(Surat)	11	2037	183	333	16%	90%	574	206	208	75 93%	49%	91%	83%	84%
Haryana	Ambala	11	2530	232	256	10%	91%	390	143	116	43 45%	52%	82%		
Haryana	Bhiwani	15	3601	235	593	16%	94%	847	221	382	100 105%	60%	83%		
Haryana	Faridabad	24	3060	130	451	15%	86%	943	160	304	51 54%	49%	87%	82%	83%
Haryana	Fatehabad	9	1269	146	257	20%	88%	319	147	152	70 74%	80%	82%		

Performance of RNTCP Case Detection (2004, third quarter), Smear Conversion (2004, second quarter) and Treatment Outcomes (2003, third quarter)

State	District	Population (in lakh) covered by RNTCP *	No. of suspects examined	Suspects examined per lakh population	No of Smear positive patients diagnosed	% of S-ve cases among suspects	Percentage smear positive patients living in the district placed on DOTS	Total patients initiated on treatment	Annualized total case detection rate †	New smear positive patients initiated on treatment	Annualized new smear positive case detection rate (%) †	% new sputum positive out of total new pulmonary cases	3 month conversion rate of new smear positive patients §	Cure rate of new smear positive patients ¶	Success rate of new smear positive patients ¶
Haryana	Gurgaon	18	3616	203	576	16%	88%	865	194	315	71 74%	61%	84%	75%	76%
Haryana	Hisar	17	2668	161	731	27%	91%	853	206	427	103 109%	76%	76%		
Haryana	Jhajjar	10	1107	116	165	15%	91%	371	155	163	68 72%	63%	80%		
Haryana	Jind	13	2179	170	368	17%	98%	555	173	262	82 86%	77%	91%	89%	89%
Haryana	Kaithal	10	1110	109	269	24%	95%	449	176	192	75 79%	63%	80%		
Haryana	Karnal	14	2266	165	370	16%	99%	489	142	201	59 62%	65%	84%	91%	91%
Haryana	Kurukshetra	9	1701	191	209	12%	87%	346	155	126	57 59%	59%	80%		
Haryana	Mahendragarh	9	1368	156	203	15%	100%	361	165	117	54 56%	50%	92%		
Haryana	Panchkula	5	846	167	136	16%	95%	245	194	89	70 74%	64%	81%		
Haryana	Panipat	10	1703	163	271	16%	91%	402	154	153	59 62%	60%	89%		
Haryana	Rewari	8	952	116	202	21%	98%	329	160	114	55 58%	64%	91%		
Haryana	Rohtak	10	4037	399	654	16%	99%	532	210	274	108 114%	83%	88%		
Haryana	Sirsa	12	1725	144	365	21%	90%	511	171	193	65 68%	67%	73%		
Haryana	Sonapat	14	1997	145	320	16%	89%	623	181	211	61 65%	53%	89%	81%	83%
Haryana	Yamunanagar	11	1708	161	232	14%	100%	455	172	180	68 72%	56%	87%		
Himachal Pradesh	Bilaspur-HP	4	999	279	73	7%	104%	172	192	74	83 87%	70%	94%	91%	91%
Himachal Pradesh	Chamba	5	1244	257	171	14%	99%	308	255	116	96 101%	62%	95%	88%	89%
Himachal Pradesh	Hamirpur-HP	4	1369	317	111	8%	94%	200	185	78	72 76%	66%	91%	90%	90%
Himachal Pradesh	Kangra	14	2666	190	316	12%	99%	698	199	241	69 72%	58%	91%	90%	91%
Himachal Pradesh	Kinnaur	0.9	190	216	9	5%	67%	24	109	11	50 53%	61%	88%	80%	85%
Himachal Pradesh	Kullu	4	1296	325	193	15%	96%	405	406	110	110 116%	50%	93%	88%	88%
Himachal Pradesh	Lahul & Spiti	0.3	175	502	5	3%	100%	16	184	3	34 36%	38%	100%	100%	100%
Himachal Pradesh	Mandi	9	2256	239	289	13%	93%	619	262	180	76 80%	59%	90%	89%	90%
Himachal Pradesh	Shimla	8	1783	235	234	13%	94%	371	196	118	62 66%	61%	95%	88%	90%
Himachal Pradesh	Sirmaur	5	1162	242	167	14%	90%	265	220	104	86 91%	69%	88%	87%	90%
Himachal Pradesh	Solan	5	2281	435	302	13%	87%	278	212	146	111 117%	83%	93%	90%	90%
Himachal Pradesh	Una	5	1042	222	118	11%	94%	192	163	88	75 79%	67%	94%	88%	88%
Jammu & Kashmir	Jammu	17	1479	87	166	11%	89%	294	69	130	31 32%	55%	86%		
Jammu & Kashmir	Pulwama	7	231	34	7	3%	100%	18		7		78%			
Jammu & Kashmir	Srinagar	13	439	33	17	4%	100%	19		8		62%			
Jharkhand	Deoghar	12	945	76	187	20%	98%	337	109	115	37 50%	46%	91%	92%	92%
Jharkhand	Dhanbad	25	2158	85	378	18%	94%	752	118	277	43 58%	48%	91%		
Jharkhand	Gumla	14	873	61	135	15%	100%	248	69	99	28 37%	60%	84%		
Jharkhand	Hazaribagh	33	2655	81	472	18%	94%	851	104	338	41 55%	48%	95%	87%	89%
Jharkhand	Jamtara	7	1048	151	189	18%	96%	352	203	120	69 92%	40%	86%		
Jharkhand	Lohardaga	4	356	92	55	15%	100%	64	66	27	28 37%	49%	100%		
Jharkhand	Palamu	22	2949	132	476	16%	99%	1130	203	390	70 93%	41%	94%	95%	96%
Jharkhand	Purbi Singhbhum	21	1375	65	363	26%	82%	556	106	236	45 60%	51%	86%		
Jharkhand	Ranchi	30	3691	125	562	15%	92%	1116	151	445	60 80%	52%	96%	90%	90%
Jharkhand	Saraikela-Kharsawan	8	441	53	116	26%	92%	186	90	87	42 56%	65%	92%		
Karnataka	Bagalkot	17	2056	119	262	13%	95%	503	116	206	48 63%	50%	86%	74%	86%
Karnataka	Bangalore City	44	10593	242	1671	16%	75%	1654	151	541	49 66%	56%	85%	83%	83%
Karnataka	Bangalore Rural	20	3859	196	265	7%	87%	589	120	245	50 66%	59%	85%	76%	76%

Performance of RNTCP Case Detection (2004, third quarter), Smear Conversion (2004, second quarter) and Treatment Outcomes (2003, third quarter)

State	District	Population (in lakh) covered by RNTCP *	No. of suspects examined	Suspects examined per lakh population	No of Smear positive patients diagnosed	% of S+ve cases among suspects	Percentage smear positive patients living in the district placed on DOTS	Total patients initiated on treatment	Annualized total case detection rate †	New smear positive patients initiated on treatment	Annualized new smear positive case detection rate (%) †	% new sputum positive out of total new pulmonary cases	3 month conversion rate of new smear positive patients §	Cure rate of new smear positive patients ¶	Success rate of new smear positive patients ¶
Karnataka	Bangalore U	25	2424	98	213	9%	100%	763	124	303	49 66%	63%	88%	78%	80%
Karnataka	Belgaum	44	7675	174	763	10%	99%	1516	137	657	60 79%	56%	87%	73%	76%
Karnataka	Bellary	21	4707	222	887	19%	100%	771	145	349	66 88%	63%	91%	87%	87%
Karnataka	Bidar	16	1840	117	264	14%	94%	428	109	172	44 58%	52%	87%	76%	77%
Karnataka	Bijapur	19	2662	140	305	11%	95%	544	115	217	46 61%	52%	82%	75%	79%
Karnataka	Chamarajanagar	10	2532	250	238	9%	89%	433	171	188	74 99%	67%	88%		
Karnataka	Chikmagalur	12	3089	259	229	7%	91%	388	130	144	48 64%	61%	91%	86%	87%
Karnataka	Chitradurga	16	2090	132	348	17%	95%	640	162	308	78 104%	58%	82%	85%	85%
Karnataka	Dakshina Kannada	20	3245	163	369	11%	95%	538	108	247	50 66%	66%	92%	86%	87%
Karnataka	Davanagere	19	3055	163	402	13%	79%	774	165	272	58 77%	49%	86%	72%	79%
Karnataka	Dharwad	17	2160	128	294	14%	96%	524	125	180	43 57%	64%	89%	76%	76%
Karnataka	Gadag	10	1787	175	386	22%	91%	339	133	143	56 75%	64%	81%	62%	69%
Karnataka	Gulbarga	33	2591	79	410	16%	96%	936	114	309	38 50%	46%	78%	66%	71%
Karnataka	Hassan	18	5008	277	258	5%	93%	547	121	199	44 59%	60%	95%	84%	84%
Karnataka	Haveri	15	1279	85	192	15%	91%	248		95		59%			
Karnataka	Kodagu	6	1882	329	109	6%	95%	188	131	82	57 76%	58%	90%		
Karnataka	Kolar	26	4677	177	564	12%	94%	784	118	331	50 67%	59%	89%	80%	81%
Karnataka	Koppal	13	1921	153	269	14%	100%	490	157	192	61 82%	54%	91%	85%	85%
Karnataka	Mandya	18	4576	248	426	9%	97%	583	126	257	56 74%	60%	91%	84%	84%
Karnataka	Mysore	28	7603	276	609	8%	94%	870	126	312	45 60%	58%	89%	80%	81%
Karnataka	Raichur	17	2546	147	407	16%	99%	703	163	283	65 87%	53%	87%	86%	87%
Karnataka	Shimoga	17	4160	242	285	7%	97%	512	119	178	41 55%	45%	90%	80%	83%
Karnataka	Tumkur	27	4165	154	500	12%	94%	732	108	304	45 60%	64%	85%	78%	78%
Karnataka	Udupi	12	2204	189	203	9%	94%	296	102	134	46 61%	74%	87%		
Karnataka	Uttara Kannada	14	1004	71	164	16%	97%	294	83	117	33 44%	56%	68%		
Kerala	Alappuzha	22	4196	194	232	6%	98%	502	93	202	37 50%	56%	88%	83%	86%
Kerala	Ernakulam	32	5322	167	375	7%	99%	650	82	286	36 48%	63%	87%	87%	88%
Kerala	Idukki	12	1987	171	75	4%	100%	156	54	71	24 33%	69%	85%	83%	85%
Kerala	Kannur	25	4198	169	296	7%	91%	484	78	218	35 47%	73%	94%	89%	90%
Kerala	Kasaragod	12	1646	133	145	9%	99%	247	80	114	37 49%	68%	89%	82%	82%
Kerala	Kollam	27	4363	164	339	8%	100%	543	82	287	43 58%	68%	91%	90%	90%
Kerala	Kottayam	20	5615	280	300	5%	99%	475	95	210	42 56%	70%	88%	87%	89%
Kerala	Kozhikode	30	5175	175	310	6%	83%	546	74	233	32 42%	68%	88%	87%	89%
Kerala	Malappuram	37	4642	124	278	6%	91%	586	63	214	23 31%	55%	87%	90%	92%
Kerala	Palakkad	27	3205	119	303	9%	96%	550	82	254	38 50%	70%	89%	85%	86%
Kerala	Pathanamthitta	13	1818	144	140	8%	100%	226	71	125	40 53%	84%	88%	89%	89%
Kerala	Thiruvananthapuram	33	6898	208	339	5%	98%	540	65	208	25 33%	57%	89%	86%	87%
Kerala	Thrissur	31	5382	176	433	8%	94%	647	85	322	42 56%	76%	89%	88%	88%
Kerala	Wayanad	8	1833	227	85	5%	94%	214	106	65	32 43%	42%	92%	92%	92%
Madhya Pradesh	Balaghat	15	1202	78	207	17%	94%	461	119	152	39 49%	47%	84%	84%	86%
Madhya Pradesh	Barwani	12	1367	118	182	13%	89%	212	73	93	32 40%	61%	82%	82%	83%
Madhya Pradesh	Bhopal	20	4397	224	664	15%	90%	945	193	286	58 73%	41%	90%	87%	88%
Madhya Pradesh	Chhatarpur	16	1205	77	303	25%	98%	476	121	152	39 48%	49%	84%	74%	76%

Performance of RNTCP Case Detection (2004, third quarter), Smear Conversion (2004, second quarter) and Treatment Outcomes (2003, third quarter)

State	District	Population (in lakh) covered by RNTCP *	No. of suspects examined	Suspects examined per lakh population	No of Smear positive patients diagnosed	% of S-ve cases among suspects	Percentage smear positive patients living in the district placed on DOTS	Total patients initiated on treatment	Annualized total case detection rate †	New smear positive patients initiated on treatment	Annualized new smear positive case detection rate (%) †	% new sputum positive out of total new pulmonary cases	3 month conversion rate of new smear positive patients §	Cure rate of new smear positive patients ¶	Success rate of new smear positive patients ¶
Madhya Pradesh	Chhindwara	20	1631	83	290	18%	80%	402	81	172	35 44%	58%	82%	73%	81%
Madhya Pradesh	Damoh	12	1818	157	427	23%	96%	662	229	270	94 117%	57%	91%	87%	90%
Madhya Pradesh	Datia	7	790	118	208	26%	76%	245		102		53%			
Madhya Pradesh	Dewas	14	1731	124	195	11%	94%	379	109	148	42 53%	50%	93%	86%	86%
Madhya Pradesh	Dhar	19	2292	123	304	13%	100%	558	120	218	47 59%	53%	89%	85%	85%
Madhya Pradesh	Dindori	6	484	78	71	15%	77%	109	71	43	28 35%	62%	74%	71%	86%
Madhya Pradesh	Guna	18	2094	118	398	19%	94%	697	157	282	63 79%	53%	84%	83%	83%
Madhya Pradesh	Gwalior	17	3228	186	658	20%	85%	642	148	279	64 80%	63%	73%		
Madhya Pradesh	Harda	5	406	80	44	11%	98%	103	81	35	28 35%	40%	90%	86%	89%
Madhya Pradesh	Hoshangabad	12	1978	171	260	13%	89%	414	143	148	51 64%	54%	95%	92%	94%
Madhya Pradesh	Indore	28	2796	101	448	16%	94%	784	114	259	38 47%	57%	83%	75%	75%
Madhya Pradesh	Jabalpur	23	2257	98	545	24%	84%	970	168	366	63 79%	48%	68%		
Madhya Pradesh	Jhabua	15	1117	75	214	19%	100%	388	104	176	47 59%	57%	98%	90%	90%
Madhya Pradesh	Katni	11	1142	101	205	18%	96%	448	158	139	49 61%	37%	88%	80%	80%
Madhya Pradesh	Khandwa	18	1783	98	224	13%	84%	500	110	178	39 49%	44%	94%	89%	89%
Madhya Pradesh	Khargone	16	1681	103	293	17%	98%	599	147	233	57 71%	53%	91%	80%	80%
Madhya Pradesh	Mandla	10	881	92	193	22%	71%	281	118	122	51 64%	59%	72%	72%	83%
Madhya Pradesh	Mandsaur	13	1659	131	266	16%	97%	436	138	191	60 76%	56%	90%	86%	92%
Madhya Pradesh	Narsinghpur	10	987	97	183	19%	92%	345	135	116	45 57%	49%	86%	81%	82%
Madhya Pradesh	Neemuch	8	1428	184	150	11%	92%	313	162	108	56 70%	43%	87%	80%	80%
Madhya Pradesh	Panna	9	650	71	151	23%	83%	185	81	58	25 32%	55%	91%		
Madhya Pradesh	Raisen	12	1017	85	151	15%	94%	404	135	98	33 41%	31%	87%	83%	86%
Madhya Pradesh	Rajgarh	13	1457	109	264	18%	95%	564	169	184	55 69%	46%	90%	84%	84%
Madhya Pradesh	Ratlam	13	1565	121	272	17%	95%	475	147	126	39 49%	46%	90%	69%	72%
Madhya Pradesh	Sagar	22	2714	126	337	12%	89%	794	147	257	48 60%	35%	90%	81%	82%
Madhya Pradesh	Satna	20	1842	92	391	21%	85%	687	138	211	42 53%	42%	86%	86%	86%
Madhya Pradesh	Sehore	12	1047	91	117	11%	94%	334	116	103	36 45%	40%	84%	84%	85%
Madhya Pradesh	Seoni	12	620	50	81	13%	99%	88		47		82%			
Madhya Pradesh	Shahdol	17	1180	70	219	19%	91%	409	97	166	40 49%	49%	81%		
Madhya Pradesh	Shajapur	14	861	63	214	25%	73%	262		116		57%			
Madhya Pradesh	Shivpuri	15	1034	67	279	27%	87%	365		200		63%			
Madhya Pradesh	Tikamgarh	13	1442	112	238	17%	81%	417	130	181	56 70%	49%	73%	49%	51%
Madhya Pradesh	Ujjain	18	2301	126	370	16%	99%	610	134	219	48 60%	48%	91%	78%	79%
Madhya Pradesh	Umariya	6	351	64	71	20%	71%	118	86	38	28 35%	48%	61%		
Madhya Pradesh	Vidisha	13	2012	155	335	17%	100%	746	230	235	72 91%	40%	88%	84%	85%
Maharashtra	Ahmadnagar	43	6248	144	450	7%	97%	987	91	373	34 43%	49%	94%	85%	85%
Maharashtra	Akola	17	2816	163	387	14%	99%	561	130	245	57 71%	57%	94%	85%	87%
Maharashtra	Amravati Mun Corp	6	2380	408	274	12%	95%	234	160	81	55 69%	61%	91%	83%	83%
Maharashtra	Amravati Rural	22	3185	146	359	11%	81%	702	128	244	45 56%	53%	84%	76%	80%
Maharashtra	Aurangabad Muni Corp	9	1727	186	266	15%	98%	221	95	111	48 60%	79%	90%	90%	91%
Maharashtra	Aurangabad-MH	22	2409	111	318	13%	99%	570	105	223	41 51%	48%	96%	93%	93%
Maharashtra	Bhandara	12	2267	188	216	10%	96%	420	139	163	54 68%	55%	86%	89%	89%
Maharashtra	Bid	23	3373	147	218	6%	100%	527	92	217	38 47%	58%	92%	85%	85%

Performance of RNTCP Case Detection (2004, third quarter), Smear Conversion (2004, second quarter) and Treatment Outcomes (2003, third quarter)

State	District	Population (in lakh) covered by RNTCP *	No. of suspects examined	Suspects examined per lakh population	No of Smear positive patients diagnosed	% of S-ve cases among suspects	Percentage smear positive patients living in the district placed on DOTS	Total patients initiated on treatment	Annualized total case detection rate †	New smear positive patients initiated on treatment	Annualized new smear positive case detection rate (%) †	% new sputum positive out of total new pulmonary cases	3 month conversion rate of new smear positive patients §	Cure rate of new smear positive patients ¶	Success rate of new smear positive patients ¶
Maharashtra	Buldana	24	4485	190	635	14%	89%	797	135	296	50 63%	56%	92%	84%	86%
Maharashtra	Chandrapur	22	3405	154	388	11%	98%	767	139	287	52 65%	54%	90%	89%	89%
Maharashtra	Dhule	18	3209	177	398	12%	97%	799	176	276	61 76%	46%	90%	80%	84%
Maharashtra	Gadchiroli	10	1417	137	153	11%	100%	286	111	115	45 56%	55%	91%	88%	90%
Maharashtra	Gondiya	13	2832	222	269	9%	95%	519	163	182	57 71%	54%	90%	86%	86%
Maharashtra	Hingoli	10	1595	152	182	11%	95%	383	146	137	52 65%	50%	92%	90%	91%
Maharashtra	Jalgaon	39	5659	145	654	12%	97%	1365	140	559	57 71%	49%	91%	85%	85%
Maharashtra	Jalna	17	2108	123	242	11%	100%	524	122	178	42 52%	45%	85%	77%	83%
Maharashtra	Kalyan Dombivli MC	13	1972	155	257	13%	83%	454	143	193	61 76%	58%	83%	80%	81%
Maharashtra	Kolhapur	32	4394	136	524	12%	96%	904	112	409	51 63%	60%	93%	89%	89%
Maharashtra	Kolhapur Mun Corp	5	594	115	58	10%	100%	192	149	60	47 58%	48%	94%	76%	76%
Maharashtra	Latur	22	2728	123	270	10%	97%	532	96	228	41 52%	58%	90%	87%	87%
Maharashtra	Mumbai	127	18287	144	3166	17%	85%	6236	197	1977	62 78%	54%	90%	86%	86%
Maharashtra	Nagpur Muni Corp	22	4027	185	678	17%	92%	878	161	306	56 70%	67%	89%	85%	85%
Maharashtra	Nagpur Rural	21	2416	114	353	15%	98%	646	122	302	57 71%	59%	95%	89%	92%
Maharashtra	Nanded	26	3672	142	600	16%	98%	889	137	349	54 67%	51%	93%	88%	88%
Maharashtra	Nanded Waghela MC	5	357	78	81	23%	100%	208	182	63	55 69%	48%	80%	45%	55%
Maharashtra	Nandurbar	14	1700	122	228	13%	102%	525	151	179	51 64%	43%	91%	86%	92%
Maharashtra	Nashik	42	6735	162	658	10%	96%	1597	154	584	56 70%	46%	91%	88%	88%
Maharashtra	Nashik Corp	11	1193	104	125	10%	100%	344	120	97	34 42%	44%	88%	82%	82%
Maharashtra	Navi Mumbai	7	2172	290	245	11%	95%	411	220	132	71 88%	60%	87%	93%	93%
Maharashtra	Osmanabad	16	3306	211	217	7%	99%	454	116	167	43 53%	47%	93%	87%	87%
Maharashtra	Parbhani	16	2144	135	278	13%	91%	517	130	195	49 62%	48%	89%	86%	87%
Maharashtra	Pimpri Chinchwad	11	2118	198	243	11%	97%	447	167	172	64 80%	65%	96%	89%	89%
Maharashtra	Pune	27	2731	101	485	18%	96%	986	146	382	57 71%	61%	91%	90%	90%
Maharashtra	Pune Rural	39	6424	164	853	13%	99%	1120	115	489	50 63%	61%	92%	85%	85%
Maharashtra	Raigarh-MH	23	3314	141	532	16%	94%	917	156	375	64 80%	55%	95%	87%	87%
Maharashtra	Ratnagiri	18	2470	137	342	14%	91%	661	147	262	58 73%	54%	90%	86%	90%
Maharashtra	Sangli	23	3588	157	408	11%	91%	746	131	319	56 70%	63%	88%	88%	88%
Maharashtra	Sangli Muni Corp	5	556	120	98	18%	98%	191	165	78	67 84%	71%	95%	91%	91%
Maharashtra	Satara	30	5283	178	534	10%	98%	1053	142	427	57 72%	54%	90%	85%	89%
Maharashtra	Sindhudurg	9	2080	227	135	6%	92%	321	140	104	45 57%	44%	87%	85%	87%
Maharashtra	Solapur	32	8036	253	557	7%	94%	854	108	447	56 71%	63%	91%	89%	89%
Maharashtra	Solapur Muni Corp	9	1353	146	178	13%	97%	315	136	131	56 71%	56%	93%	85%	85%
Maharashtra	Thane	48	6322	132	910	14%	100%	1781	149	740	62 77%	56%	93%	91%	91%
Maharashtra	Thane Muni Corp	13	1996	149	428	21%	92%	652	194	206	61 77%	66%	88%	86%	86%
Maharashtra	Ulhasnagar Muni Corp	5	977	194	198	20%	92%	239	190	78	62 78%	44%	91%		
Maharashtra	Wardha	13	1920	147	189	10%	97%	471	144	180	55 69%	55%	91%	87%	87%
Maharashtra	Washim	11	1246	115	186	15%	100%	434	160	144	53 66%	47%	86%		
Maharashtra	Yavatmal	26	4065	155	657	16%	99%	1021	156	401	61 77%	53%	94%	84%	86%
Manipur	Bishnupur	2	293	132	41	14%	100%	119	214	40	72 96%	60%	94%	88%	91%
Manipur	Chandel	1.3	170	128	17	10%	100%	73	220	17	51 68%	37%	88%	87%	87%
Manipur	Churachandpur	2	520	210	47	9%	100%	342	553	47	76 101%	22%	84%	89%	89%

Performance of RNTCP Case Detection (2004, third quarter), Smear Conversion (2004, second quarter) and Treatment Outcomes (2003, third quarter)

State	District	Population (in lakh) covered by RNTCP *	No. of suspects examined	Suspects examined per lakh population	No of Smear positive patients diagnosed	% of S+ve cases among suspects	Percentage smear positive patients living in the district placed on DOTS	Total patients initiated on treatment	Annualized total case detection rate †	New smear positive patients initiated on treatment	Annualized new smear positive case detection rate (%) †	% new sputum positive out of total new pulmonary cases	3 month conversion rate of new smear positive patients §	Cure rate of new smear positive patients ¶	Success rate of new smear positive patients ¶
Manipur	Imphal East	4	455	107	66	15%	100%	191	179	48	45 60%	45%	87%	72%	72%
Manipur	Imphal West	5	1616	340	131	8%	99%	311	262	86	72 96%	41%	92%	86%	86%
Manipur	Senapati	4	400	97	42	11%	100%	144	140	42	41 55%	56%	96%	77%	77%
Manipur	Tamenglong	1.2	140	116	17	12%	100%	32	106	14	46 62%	64%	67%	100%	100%
Manipur	Thoubal	4	406	102	51	13%	100%	175	177	51	51 69%	44%	78%	85%	85%
Manipur	Ukhrul	1.5	136	89	14	10%	100%	49	129	14	37 49%	64%	92%	92%	92%
Meghalaya	E Khasi Hills & Ri Bhoi	9	1196	130	172	14%	99%	504	218	102	44 59%	43%	86%		
Meghalaya	East Garo Hills	3	330	123	47	14%	100%	82	122	37	55 74%	62%	97%		
Meghalaya	Jaintia Hills	3	237	74	38	16%	100%	70	88	22	28 37%	52%	85%		
Meghalaya	W & S Garo Hills	7	862	130	150	17%	92%	268	161	106	64 85%	60%	74%		
Meghalaya	West Khasi Hills	3	444	140	432	97%	100%	160	201	44	55 74%	44%	90%		
Mizoram	Aizawl	4	516	141	73	14%	97%	297	324	56	61 81%	35%	83%	86%	88%
Mizoram	Champhai	1.1	129	118	12	9%	100%	41	150	12	44 58%	57%	100%	94%	94%
Mizoram	Kolasib	0.7	184	279	24	13%	96%	56	340	23	140 186%	55%	100%	100%	100%
Mizoram	Lawngtlai	0.8	93	118	11	12%	100%	27	137	11	56 74%	73%	80%	73%	73%
Mizoram	Lunglei	1.5	275	186	20	7%	100%	69	186	20	54 72%	44%	91%	91%	91%
Mizoram	Mamit	0.7	71	106	9	13%	100%	12	71	9	54 71%	90%	100%	85%	85%
Mizoram	Saiha	0.7	133	203	17	13%	100%	55	335	17	104 138%	45%	100%	88%	88%
Mizoram	Serchhip	0.6	85	142	2	2%	100%	18	120	2	13 18%	18%	100%	100%	100%
Nagaland	Kohima	4	365	100	48	13%	88%	114	125	42	46 61%	78%	89%	63%	71%
Nagaland	Mokokchung	3	372	141	28	8%	96%	75	114	27	41 55%	68%	100%	85%	85%
Nagaland	Mon	3	312	104	66	21%	77%	117	155	51	68 90%	88%	97%	91%	91%
Nagaland	Phek	1.7	132	77	9	7%	100%	42	98	9	21 28%	64%	64%	85%	92%
Nagaland	Tuensang	5	685	142	57	8%	96%	240	199	57	47 63%	51%	89%	86%	86%
Nagaland	Wokha	1.9	19	10	19	100%	100%	29	62	15	32 43%	68%	95%	79%	79%
Nagaland	Zunheboto	1.8	74	41	9	12%	100%	24	53	9	20 27%	60%	89%	100%	100%
Orissa	Anugul	12	1507	127	182	12%	96%	317	106	139	47 62%	65%	76%	60%	69%
Orissa	Balangir	14	1239	89	265	21%	93%	603	173	226	65 86%	43%	87%		
Orissa	Baleshwar	21	2434	115	302	12%	84%	480	91	208	39 52%	62%	78%	65%	65%
Orissa	Bargarh	14	1047	74	233	22%	100%	412	117	185	53 70%	55%	91%		
Orissa	Baudh	4	554	142	57	10%	93%	143	147	65	67 89%	65%	90%	93%	93%
Orissa	Bhadrak	14	961	69	81	8%	96%	197	57	82	24 31%	66%	85%	73%	75%
Orissa	Cuttack	24	1994	81	389	20%	100%	422	69	181	30 39%	65%	69%		
Orissa	Debagarh	3	403	141	33	8%	86%	69	96	25	35 47%	42%	94%	74%	79%
Orissa	Dhenkanal	11	1195	107	151	13%	88%	319	115	125	45 60%	51%	88%		
Orissa	Gajapati	5	829	153	169	20%	94%	252	186	136	100 134%	73%	73%	58%	78%
Orissa	Ganjam	33	3484	106	804	23%	100%	1274	155	584	71 95%	62%	68%		
Orissa	Jagatsinghapur	11	818	74	65	8%	100%	117	42	54	20 26%	76%	83%		
Orissa	Jajapur	17	1356	80	139	10%	100%	300	71	139	33 44%	66%	83%		
Orissa	Jharsuguda	5	856	161	81	9%	85%	173	130	65	49 65%	56%	86%	79%	83%
Orissa	Kalahandi	14	2689	193	365	14%	88%	497	143	260	75 99%	72%	90%	84%	86%
Orissa	Kandhamal	7	1411	208	171	12%	98%	204	120	114	67 90%	83%	82%	83%	86%
Orissa	Kendrapara	14	973	71	85	9%	99%	210	62	69	20 27%	49%	92%	82%	82%

Performance of RNTCP Case Detection (2004, third quarter), Smear Conversion (2004, second quarter) and Treatment Outcomes (2003, third quarter)

State	District	Population (in lakh) covered by RNTCP *	No. of suspects examined	Suspects examined per lakh population	No of Smear positive patients diagnosed	% of S-ve cases among suspects	Percentage smear positive patients living in the district placed on DOTS	Total patients initiated on treatment	Annualized total case detection rate †	New smear positive patients initiated on treatment	Annualized new smear positive case detection rate (%) †	% new sputum positive out of total new pulmonary cases	3 month conversion rate of new smear positive patients §	Cure rate of new smear positive patients ¶	Success rate of new smear positive patients ¶
Orissa	Kendujhar	16	2916	179	342	12%	93%	603	148	256	63 84%	61%	91%	90%	92%
Orissa	Khordha	13	1097	84	120	11%	100%	318	97	108	33 44%	43%	62%		
Orissa	Koraput	12	1881	153	241	13%	93%	386	125	199	65 86%	72%	92%	87%	90%
Orissa	Malkangiri	5	748	149	173	23%	103%	231	184	154	123 164%	81%	75%	72%	82%
Orissa	Mayurbhanj	23	3706	160	681	18%	96%	1284	221	585	101 134%	55%	91%	79%	83%
Orissa	Nabarangapur	11	1047	98	146	14%	84%	250	94	116	44 58%	57%	92%	91%	92%
Orissa	Nayagarh	9	741	82	81	11%	73%	167	74	60	27 35%	63%	70%		
Orissa	Nuapada	6	563	102	92	16%	97%	205	148	78	56 75%	52%	66%	58%	58%
Orissa	Puri	16	1868	119	159	9%	95%	368	94	102	26 35%	52%	91%	73%	83%
Orissa	Rayagada	9	1664	193	282	17%	91%	363	169	220	102 136%	71%	89%	83%	88%
Orissa	Sambalpur	10	1990	205	242	12%	91%	322	133	130	54 71%	55%	87%	81%	84%
Orissa	Sonapur	6	532	94	86	16%	95%	192	136	75	53 71%	48%	83%		
Orissa	Sundargarh	19	3815	199	476	12%	82%	733	153	337	70 94%	63%	92%	79%	84%
Pondicherry	Pondicherry	10	2298	223	278	12%	90%	393	153	175	68 91%	66%	84%		
Punjab	Amritsar	32	3871	119	775	20%	96%	1132	140	497	61 64%	70%	89%	80%	86%
Punjab	Bathinda	12	1947	156	251	13%	91%	362	116	135	43 46%	56%	89%	84%	84%
Punjab	Fatehgarh Sahib	6	879	154	96	11%	99%	162	114	74	52 55%	70%	73%	87%	88%
Punjab	Hoshiarpur	16	4068	261	360	9%	93%	451	116	200	51 54%	66%	77%	71%	76%
Punjab	Ludhiana	32	5867	183	647	11%	89%	1415	177	454	57 60%	45%	91%	83%	87%
Punjab	Nawanshahr	6	752	121	70	9%	97%	163	105	51	33 35%	47%	83%	75%	88%
Punjab	Patiala	19	4193	216	497	12%	91%	679	140	250	52 54%	60%	86%	79%	86%
Punjab	Rupnagar	12	2595	221	227	9%	93%	407	139	160	55 57%	63%	86%	82%	85%
Punjab	Sangrur	21	3224	153	359	11%	92%	687	130	233	44 47%	49%	83%	81%	89%
Rajasthan	Ajmer	24	3759	160	975	26%	81%	1528	260	509	87 108%	51%	92%	85%	87%
Rajasthan	Alwar	32	3375	105	791	23%	99%	1363	169	506	63 78%	55%	90%	88%	90%
Rajasthan	Banswara	16	2113	131	549	26%	96%	766	189	358	89 111%	67%	91%	85%	91%
Rajasthan	Baran	11	2148	195	415	19%	102%	754	274	319	116 145%	56%	93%	86%	86%
Rajasthan	Barmer	21	2704	128	389	14%	97%	731	138	276	52 65%	47%	95%	88%	89%
Rajasthan	Bharatpur	23	3218	142	547	17%	96%	875	155	327	58 72%	51%	90%	88%	90%
Rajasthan	Bhilwara	22	4128	191	762	18%	98%	1423	263	556	103 128%	64%	93%	88%	88%
Rajasthan	Bikaner	20	1971	96	404	20%	97%	736	144	269	53 66%	57%	91%	87%	90%
Rajasthan	Bundi	10	1528	147	268	18%	98%	590	228	224	86 108%	50%	88%	89%	91%
Rajasthan	Chittaurgarh	19	3165	163	516	16%	92%	859	177	381	78 98%	70%	92%	87%	92%
Rajasthan	Churu	18	2095	114	583	28%	99%	1051	230	378	83 103%	55%	90%	86%	87%
Rajasthan	Dausa	14	2660	187	438	16%	94%	659	186	251	71 88%	56%	90%	86%	86%
Rajasthan	Dhaulpur	11	1775	168	345	19%	91%	550	208	183	69 86%	53%	90%	84%	85%
Rajasthan	Dungarpur	12	1350	113	421	31%	88%	604	202	292	98 122%	63%	91%	90%	91%
Rajasthan	Ganganagar	19	2426	126	517	21%	95%	877	182	338	70 88%	56%	95%	87%	87%
Rajasthan	Hanumangarh	16	3112	190	650	21%	94%	815	199	316	77 97%	68%	91%	86%	88%
Rajasthan	Jaipur	57	14006	247	2574	18%	90%	2946	208	944	67 83%	51%	91%	89%	89%
Rajasthan	Jaisalmer	5	839	153	120	14%	93%	200	146	88	64 80%	64%	94%	90%	90%
Rajasthan	Jalore	16	1353	87	269	20%	91%	497	127	146	37 47%	41%	89%	81%	81%
Rajasthan	Jhalawar	13	2301	181	436	19%	77%	540	170	219	69 86%	58%	88%	87%	87%

Performance of RNTCP Case Detection (2004, third quarter), Smear Conversion (2004, second quarter) and Treatment Outcomes (2003, third quarter)

State	District	Population (in lakh) covered by RNTCP *	No. of suspects examined	Suspects examined per lakh population	No of Smear positive patients diagnosed	% of S-ve cases among suspects	Percentage smear positive patients living in the district placed on DOTS	Total patients initiated on treatment	Annualized total case detection rate †	New smear positive patients initiated on treatment	Annualized new smear positive case detection rate (%) †	% new sputum positive out of total new pulmonary cases	3 month conversion rate of new smear positive patients §	Cure rate of new smear positive patients ¶	Success rate of new smear positive patients ¶
Rajasthan	Jhunjhunun	21	2086	101	410	20%	91%	728	141	243	47 59%	51%	90%	84%	85%
Rajasthan	Jodhpur	31	3610	116	585	16%	85%	1079	139	397	51 64%	45%	90%	86%	87%
Rajasthan	Karauli	13	2043	157	476	23%	98%	715	220	294	91 113%	56%	96%	93%	93%
Rajasthan	Kota	17	2610	154	441	17%	95%	715	169	279	66 83%	54%	95%	93%	96%
Rajasthan	Nagaur	30	4321	145	618	14%	94%	1147	153	377	50 63%	44%	94%	87%	89%
Rajasthan	Pali	20	2530	129	495	20%	100%	1009	206	354	72 90%	45%	96%	90%	90%
Rajasthan	Rajsamand	11	1217	114	246	20%	86%	502	189	208	78 98%	57%	87%	84%	85%
Rajasthan	Sawai Madhopur	12	2660	221	494	19%	92%	697	232	263	87 109%	60%	93%	88%	88%
Rajasthan	Sikar	25	3385	137	594	18%	95%	1006	163	333	54 68%	51%	91%	91%	92%
Rajasthan	Sirohi	9	1249	136	302	24%	92%	434	189	190	83 104%	57%	90%	86%	86%
Rajasthan	Tonk	13	2731	209	565	21%	98%	948	290	394	121 151%	57%	91%	87%	90%
Rajasthan	Udaipur	28	3547	125	1033	29%	99%	1588	224	702	99 124%	68%	88%	86%	88%
Sikkim	East	3	1093	410	121	11%	96%	267	401	75	113 150%	53%	84%	95%	95%
Sikkim	North	0.4	101	226	13	13%	100%	40	358	13	116 155%	50%	78%	100%	100%
Sikkim	South	1.4	428	299	54	13%	96%	119	332	41	115 153%	58%	93%	90%	90%
Sikkim	West	1.3	283	211	33	12%	91%	69	206	23	69 91%	64%	93%	88%	88%
Tamil Nadu	Chennai	44	11634	267	1276	11%	100%	1884	173	688	63 84%	57%	95%	90%	90%
Tamil Nadu	Coimbatore	44	10544	242	910	9%	99%	1532	141	696	64 85%	61%	92%	89%	89%
Tamil Nadu	Cuddalore	24	8221	349	507	6%	93%	930	158	362	62 82%	51%	95%	89%	89%
Tamil Nadu	Dharmapuri	29	7369	252	542	7%	93%	903	123	400	55 73%	66%	96%	88%	88%
Tamil Nadu	Dindigul	20	8644	436	691	8%	94%	941	190	380	77 102%	56%	90%	88%	88%
Tamil Nadu	Erode	27	6627	249	558	8%	97%	852	128	389	59 78%	59%	92%	87%	87%
Tamil Nadu	Kancheepuram	30	5369	181	544	10%	98%	1217	164	517	70 93%	66%	94%	90%	90%
Tamil Nadu	Kanniyakumari	17	4081	237	414	10%	86%	655	152	260	60 80%	51%	90%	87%	87%
Tamil Nadu	Karur	10	2114	219	181	9%	83%	377	156	143	59 79%	49%	90%	86%	88%
Tamil Nadu	Madurai	26	5437	206	515	9%	95%	1066	161	397	60 80%	48%	92%	90%	91%
Tamil Nadu	Nagapattinam	15	3041	198	269	9%	90%	574	150	217	57 75%	46%	91%	82%	82%
Tamil Nadu	Namakkal	15	4140	268	337	8%	100%	666	173	239	62 83%	53%	93%	90%	90%
Tamil Nadu	Perambalur	12	2355	193	171	7%	100%	360	118	153	50 67%	62%	93%	87%	87%
Tamil Nadu	Pudukkottai	15	3278	219	329	10%	98%	555	148	244	65 87%	56%	90%	86%	86%
Tamil Nadu	Ramanathapuram	12	2469	202	246	10%	90%	496	162	213	70 93%	52%	95%	85%	85%
Tamil Nadu	Salem	31	8724	282	588	7%	85%	1212	157	431	56 74%	49%	91%	85%	85%
Tamil Nadu	Sivaganga	12	2004	169	188	9%	100%	446	150	187	63 84%	52%	91%	87%	87%
Tamil Nadu	Thanjavur	23	6851	301	505	7%	94%	814	143	310	54 73%	53%	92%	89%	89%
Tamil Nadu	The Nilgiris	8	1217	154	67	6%	98%	140	71	49	25 33%	60%	92%	90%	90%
Tamil Nadu	Theni	11	3035	269	251	8%	92%	639	226	175	62 83%	34%	89%	88%	88%
Tamil Nadu	Thiruvallur	28	5357	189	443	8%	88%	1152	163	486	69 92%	62%	90%	86%	86%
Tamil Nadu	Thiruvavur	12	2130	177	204	10%	92%	378	126	147	49 65%	52%	91%	90%	90%
Tamil Nadu	Tiruchirappalli	25	5151	209	560	11%	93%	911	148	386	63 83%	57%	91%	89%	90%
Tamil Nadu	Tirunelveli	29	6131	212	637	10%	79%	1392	193	456	63 84%	42%	94%	85%	85%
Tamil Nadu	Tiruvanamalai	23	6492	288	395	6%	100%	688	122	395	70 94%	71%	93%	90%	90%
Tamil Nadu	Toothukudi	16	3172	196	341	11%	97%	664	164	285	71 94%	53%	93%	85%	85%
Tamil Nadu	Vellore	36	12892	359	962	7%	100%	1494	166	647	72 96%	52%	95%	90%	90%

Performance of RNTCP Case Detection (2004, third quarter), Smear Conversion (2004, second quarter) and Treatment Outcomes (2003, third quarter)

State	District	Population (in lakh) covered by RNTCP *	No. of suspects examined	Suspects examined per lakh population	No of Smear positive patients diagnosed	% of S-ve cases among suspects	Percentage smear positive patients living in the district placed on DOTS	Total patients initiated on treatment	Annualized total case detection rate †	New smear positive patients initiated on treatment	Annualized new smear positive case detection rate (%) †	% new sputum positive out of total new pulmonary cases	3 month conversion rate of new smear positive patients §	Cure rate of new smear positive patients ¶	Success rate of new smear positive patients ¶
Tamil Nadu	Viluppuram	30	7216	237	623	9%	94%	1048	138	460	61 81%	60%	92%	86%	86%
Tamil Nadu	Virudhunagar	18	4575	253	545	12%	92%	1043	231	368	81 109%	53%	92%	89%	89%
Tripura	South Tripura	8	294	37	37	13%	100%	73		37		59%			
Tripura	West Tripura	16	1113	70	101	9%	100%	197		101		72%			
Uttar Pradesh	Agra	39	4533	117	867	19%	92%	1388	144	421	44 46%	53%	83%	63%	64%
Uttar Pradesh	Aligarh	32	3349	105	558	17%	88%	888	111	396	49 52%	53%	85%	77%	78%
Uttar Pradesh	Allahabad	53	2981	56	491	16%	89%	1194	90	541	41 43%	60%	84%		
Uttar Pradesh	Baghpat	12	1800	144	268	15%	95%	571	183	191	61 64%	49%	92%	86%	88%
Uttar Pradesh	Bahraich	26	4466	175	677	15%	98%	1297	203	468	73 77%	46%	91%	91%	92%
Uttar Pradesh	Barabanki	29	3897	136	724	19%	97%	1150	161	507	71 75%	58%	91%	88%	89%
Uttar Pradesh	Bareilly	39	6024	156	832	14%	99%	2099	218	725	75 79%	40%	89%	78%	80%
Uttar Pradesh	Basti	22	1161	52	188	16%	95%	583	105	140	25 27%	31%	79%	78%	78%
Uttar Pradesh	Bijnor	34	4815	144	440	9%	88%	955	114	286	34 36%	39%	88%	78%	82%
Uttar Pradesh	Budaun	33	4854	148	758	16%	90%	1371	167	588	72 75%	48%	90%	74%	80%
Uttar Pradesh	Bulandshahar	31	2981	95	491	16%	89%	950	121	347	44 47%	48%	93%	86%	90%
Uttar Pradesh	Etah	30	3967	133	675	17%	98%	838	112	390	52 55%	64%	89%	70%	74%
Uttar Pradesh	Etawah	14	1066	74	220	21%	63%	357	99	124	35 36%	41%	82%		
Uttar Pradesh	Faizabad	22	344	15	337	98%	0%	601	107	251	45 47%	51%	84%		
Uttar Pradesh	Fatehpur	25	3167	128	472	15%	88%	818	132	259	42 44%	43%	85%	73%	83%
Uttar Pradesh	Gautam Budh Nagar	13	2131	167	357	17%	98%	670	210	227	71 75%	55%	89%	84%	85%
Uttar Pradesh	Ghaziabad	35	6570	186	1072	16%	92%	2046	232	827	94 99%	56%	92%	89%	89%
Uttar Pradesh	Hamirpur-UP	11	1776	159	184	10%	94%	449	161	120	43 45%	32%	83%	76%	84%
Uttar Pradesh	Jaunpur	42	3662	87	537	15%	85%	1120	107	423	40 43%	44%	91%		
Uttar Pradesh	Jhansi	19	2265	121	327	14%	81%	486	104	208	44 47%	52%	86%	64%	64%
Uttar Pradesh	Kanpur Nagar	44	3774	85	820	22%	100%	778	70	362	33 34%	56%	86%		
Uttar Pradesh	Kheri	34	3944	115	692	18%	96%	1216	142	471	55 58%	47%	76%		
Uttar Pradesh	Lucknow	39	9443	239	1305	14%	87%	1574	160	630	64 67%	58%	90%	88%	88%
Uttar Pradesh	Mainpuri	17	1986	116	260	13%	96%	465	109	223	52 55%	52%	91%	89%	89%
Uttar Pradesh	Mathura	22	1681	76	319	19%	95%	675	122	237	43 45%	44%	90%	75%	75%
Uttar Pradesh	Meerut	32	6470	201	831	13%	99%	1688	210	685	85 90%	52%	93%	91%	92%
Uttar Pradesh	Mirzapur	23	295	13	295	100%	96%	554	98	216	38 40%	45%	76%		
Uttar Pradesh	Moradabad	40	841	21	826	98%	1%	1593	159	610	61 64%	40%	90%	87%	87%
Uttar Pradesh	Muzaffarnagar	38	7318	193	1061	14%	91%	1764	186	718	76 80%	53%	87%	77%	80%
Uttar Pradesh	Rae Bareli	31	3026	98	524	17%	105%	1033	134	524	68 72%	51%	87%	84%	92%
Uttar Pradesh	Rampur	21	4420	215	514	12%	100%	920	179	328	64 67%	51%	89%	80%	82%
Uttar Pradesh	Saharanpur	31	5985	196	771	13%	94%	1349	177	534	70 74%	52%	93%	91%	92%
Uttar Pradesh	Shahjahanpur	27	3474	127	431	12%	76%	732	107	257	38 40%	43%	85%		
Uttar Pradesh	Sitapur	39	4720	122	774	16%	77%	1526	158	514	53 56%	42%	87%	80%	82%
Uttar Pradesh	Sultanpur	34	4196	123	417	10%	99%	895	105	338	40 42%	42%	89%		
Uttar Pradesh	Unnao	29	3725	129	526	14%	100%	1028	142	376	52 55%	40%	92%	86%	86%
Uttar Pradesh	Varanasi	34	4887	145	779	16%	88%	1188	141	473	56 59%	56%	91%	80%	80%
Uttaranchal	Almora	7	1200	181	89	7%	100%	151	91	55	33 35%	54%	97%	96%	96%
Uttaranchal	Bageshwar	3	158	60	23	15%	100%	32		14		67%			

Performance of RNTCP Case Detection (2004, third quarter), Smear Conversion (2004, second quarter) and Treatment Outcomes (2003, third quarter)

State	District	Population (in lakh) covered by RNTCP *	No. of suspects examined	Suspects examined per lakh population	No of Smear positive patients diagnosed	% of S-ve cases among suspects	Percentage smear positive patients living in the district placed on DOTS	Total patients initiated on treatment	Annualized total case detection rate †	New smear positive patients initiated on treatment	Annualized new smear positive case detection rate (%) †	% new sputum positive out of total new pulmonary cases	3 month conversion rate of new smear positive patients §	Cure rate of new smear positive patients ¶	Success rate of new smear positive patients ¶
Uttaranchal	Chamoli	4	829	213	135	16%	98%	218		79		51%			
Uttaranchal	Champawat	2	181	77	40	22%	100%	41		13		52%			
Uttaranchal	Dehradun	13	3089	229	377	12%	100%	684	203	218	65 68%	49%	96%	95%	95%
Uttaranchal	Garhwal	7	470	64	60	13%	100%	90		44		76%			
Uttaranchal	Hardwar	15	2511	165	372	15%	98%	483	127	206	54 57%	55%	87%		
Uttaranchal	Nainital	8	1822	227	262	14%	99%	343	171	119	59 62%	51%	89%		
Uttaranchal	Pithoragarh	5	382	78	79	21%	96%	102		40		77%			
Uttaranchal	Rudraprayag	2	410	171	72	18%	97%	89	148	43	72 76%	73%	80%		
Uttaranchal	Tehri Garhwal	6	399	63	53	13%	96%	83		28		51%			
Uttaranchal	Udhamsingh Nagar	13	2543	195	272	11%	93%	337	104	147	45 48%	57%	93%		
Uttaranchal	Uttarkashi	3	643	207	121	19%	92%	144	186	58	75 79%	59%	81%		
West Bengal	Bankura	34	6033	180	781	13%	94%	1209	144	548	65 87%	61%	93%	89%	92%
West Bengal	Barddhaman	73	12268	169	1367	11%	94%	2554	141	970	53 71%	53%	92%	88%	88%
West Bengal	Birbhum	32	5816	184	854	15%	91%	1121	142	611	77 103%	68%	89%	86%	87%
West Bengal	Dakshin Dinajpur	16	2981	189	458	15%	88%	746	189	391	99 132%	68%	85%	76%	76%
West Bengal	Darjiling	17	3205	190	527	16%	93%	861	204	316	75 100%	60%	78%		
West Bengal	Haora	45	7800	174	837	11%	83%	1505	134	584	52 69%	61%	88%	85%	86%
West Bengal	Hugli	53	7362	139	894	12%	97%	1766	133	665	50 67%	53%	91%	89%	90%
West Bengal	Jaipauri	36	6689	187	1059	16%	95%	1731	194	818	92 122%	69%	90%	87%	87%
West Bengal	Koch Bihar	26	4266	164	455	11%	93%	794	122	347	53 71%	61%	91%	88%	89%
West Bengal	Kolkata	48	6499	135	1199	18%	94%	1676	139	710	59 79%	71%	88%	85%	85%
West Bengal	Maldah	35	5724	166	800	14%	81%	1409	163	634	73 98%	58%	85%	80%	80%
West Bengal	Medinipur East	46	5818	125	344	6%	94%	640	55	269	23 31%	62%	86%	80%	82%
West Bengal	Medinipur West	55	8220	150	1030	13%	92%	1907	139	770	56 75%	57%	90%	83%	86%
West Bengal	Murshidabad	62	9739	158	1072	11%	92%	1952	127	901	59 78%	61%	93%	89%	89%
West Bengal	Nadia	48	11065	229	787	7%	94%	1452	120	554	46 61%	53%	92%	88%	88%
West Bengal	North 24 Parganas	94	11712	125	1442	12%	93%	2419	103	1080	46 61%	68%	93%	90%	90%
West Bengal	Puruliya	27	4187	157	642	15%	99%	1158	174	495	74 99%	54%	90%	89%	90%
West Bengal	South 24 Parganas	73	9180	126	969	11%	94%	1693	93	793	44 58%	66%	93%	89%	89%
West Bengal	Uttar Dinajpur	26	4585	179	500	11%	94%	842	131	412	64 86%	65%	86%	81%	81%
	Total	9073	1384611	153	188271	14%	92%	323229	144	125449	56 75%	55%	89%	85%	86%

106(21%) districts had "% new sputum positive out of all new pulmonary cases" either less than 45% or more than 71%

State	District	% new sputum positive out of total new pulmonary cases
Andhra Pradesh	Cuddapah	43%
Andhra Pradesh	East Godavari	45%
Andhra Pradesh	Bhadrachalam	73%
Arunachal Pradesh	Ziro DTC	36%
Assam	Cachar	40%
Assam	Karimganj	42%
Assam	Darrang	44%
Assam	Sonitpur	44%
Assam	Golaghat	44%
Bihar	Munger	22%
Bihar	Vaishali	36%
Bihar	Muzaffarpur	37%
Bihar	Patna	42%
Chhatisgarh	Surguja	39%
Chhatisgarh	Kawardha	40%
Chhatisgarh	Janjgir	41%
Chhatisgarh	Koriya	42%
Chhatisgarh	Raipur	43%
Chhatisgarh	Durg	43%
Chhatisgarh	Raigarh-CG	45%
Chhatisgarh	Dantewada	88%
Delhi	Hedgewar C Clinic	44%
Delhi	GTB Chest Clinic	77%
Gujarat	Chhota Udepur	73%
Gujarat	Dahod	75%
Gujarat	Amreli	79%
Haryana	Hisar	76%
Haryana	Jind	77%
Haryana	Fatehabad	80%
Haryana	Rohtak	83%
Himachal Pradesh	Lahul & Spiti	38%
Himachal Pradesh	Solan	83%
Jammu & Kashmir	Pulwama	78%
Jharkhand	Jamtara	40%
Jharkhand	Palamu	41%
Karnataka	Shimoga	45%
Karnataka	Udupi	74%
Kerala	Wayanad	42%
Kerala	Kannur	73%
Kerala	Thrissur	76%
Kerala	Pathanamthitta	84%
Madhya Pradesh	Raisen	31%
Madhya Pradesh	Sagar	35%
Madhya Pradesh	Katni	37%
Madhya Pradesh	Harda	40%
Madhya Pradesh	Sehore	40%
Madhya Pradesh	Vidisha	40%
Madhya Pradesh	Bhopal	41%
Madhya Pradesh	Satna	42%
Madhya Pradesh	Neemuch	43%
Madhya Pradesh	Khandwa	44%
Madhya Pradesh	Seoni	82%
Maharashtra	Aurangabad Muni Corp	79%

State	District	% new sputum positive out of total new pulmonary cases
Maharashtra	Nandurbar	43%
Maharashtra	Ulhasnagar Muni Corp	44%
Maharashtra	Nashik Corp	44%
Maharashtra	Sindhudurg	44%
Manipur	Churachandpur	22%
Manipur	Chandel	37%
Manipur	Imphal West	41%
Manipur	Thoubal	44%
Manipur	Imphal East	45%
Meghalaya	E Khasi Hills & Ri Bhoi	43%
Meghalaya	West Khasi Hills	44%
Mizoram	Serchhip	18%
Mizoram	Aizawl	35%
Mizoram	Lunglei	44%
Mizoram	Saiha	45%
Mizoram	Lawngtlai	73%
Mizoram	Mamit	90%
Nagaland	Kohima	78%
Nagaland	Mon	88%
Orissa	Debagarh	42%
Orissa	Balangir	43%
Orissa	Khordha	43%
Orissa	Rayagada	71%
Orissa	Kalahandi	72%
Orissa	Koraput	72%
Orissa	Gajapati	73%
Orissa	Jagatsinghapur	76%
Orissa	Malkangiri	81%
Orissa	Kandhamal	83%
Punjab	Ludhiana	45%
Rajasthan	Jalore	41%
Rajasthan	Nagaur	44%
Tamil Nadu	Theni	34%
Tamil Nadu	Tirunelveli	42%
Tamil Nadu	Tiruvanamalai	71%
Tripura	West Tripura	72%
Uttar Pradesh	Basti	31%
Uttar Pradesh	Hamirpur-UP	32%
Uttar Pradesh	Bijnor	39%
Uttar Pradesh	Moradabad	40%
Uttar Pradesh	Bareilly	40%
Uttar Pradesh	Unnao	40%
Uttar Pradesh	Etawah	41%
Uttar Pradesh	Sultanpur	42%
Uttar Pradesh	Sitapur	42%
Uttar Pradesh	Shahjahanpur	43%
Uttar Pradesh	Fatehpur	43%
Uttar Pradesh	Mathura	44%
Uttar Pradesh	Jaunpur	44%
Uttaranchal	Rudraprayag	73%
Uttaranchal	Garhwal	76%
Uttaranchal	Pithoragarh	77%
West Bengal	Kolkata	71%

**District with low (<40%) and high (>120%)
New Smear Positive Case Detection Rate**

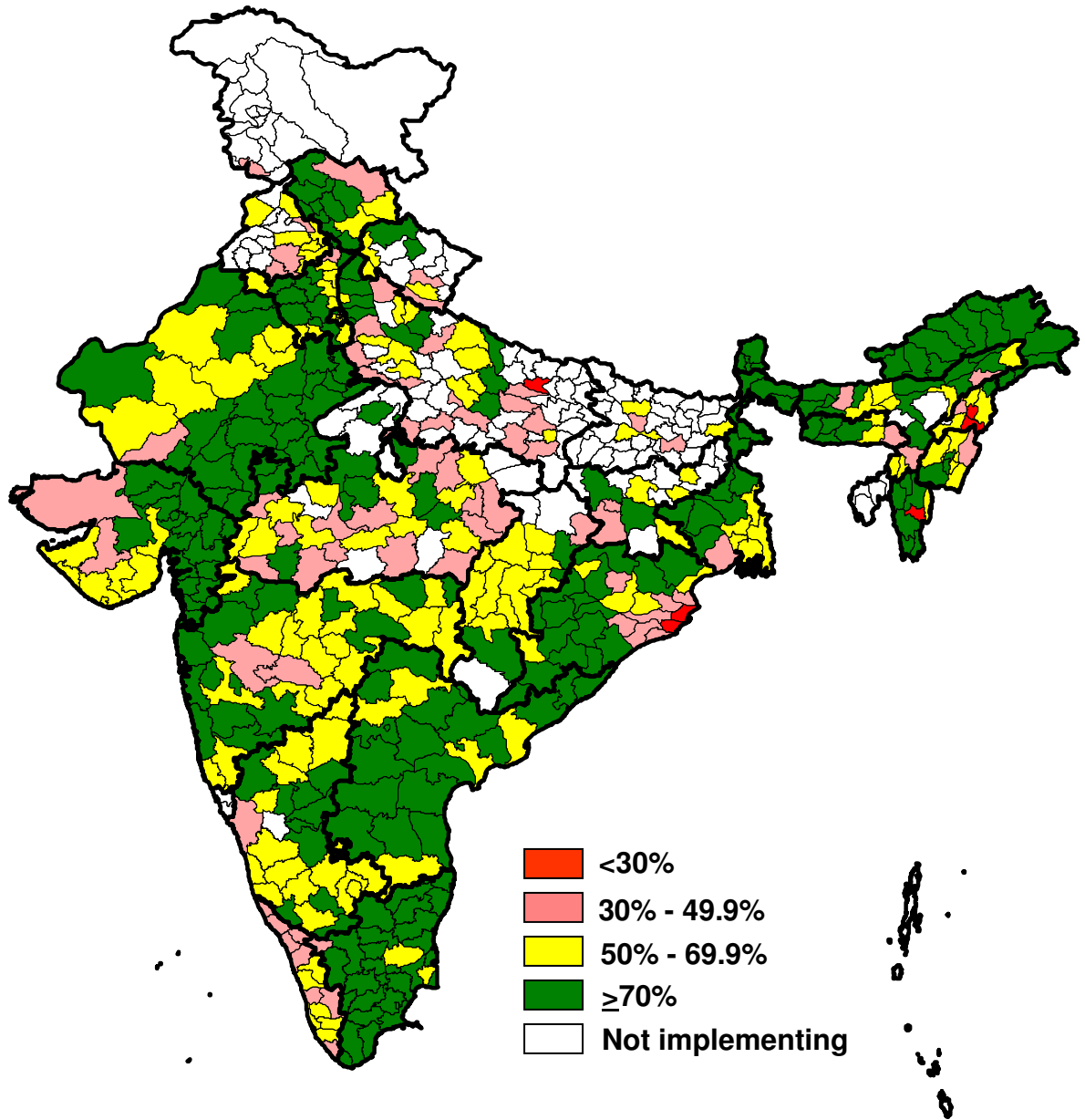
Sl.No.	State	District	Annualized new smear positive case detection rate (%) [†]
1	Assam	Cachar	24 33%
2	Assam	Sibsagar	25 34%
3	Assam	Barpeta	30 40%
4	Bihar	Munger	25 34%
5	Chhatisgarh	Jashpur	32 40%
6	Himachal Pradesh	Lahul & Spiti	34 36%
7	Jammu & Kashmir	Jammu	31 32%
8	Jharkhand	Gumla	28 37%
9	Jharkhand	Lohardaga	28 37%
10	Kerala	Malappuram	23 31%
11	Kerala	Idukki	24 33%
12	Kerala	Thiruvananthapuram	25 33%
13	Madhya Pradesh	Panna	25 32%
14	Madhya Pradesh	Umariya	28 35%
15	Madhya Pradesh	Harda	28 35%
16	Madhya Pradesh	Dindori	28 35%
17	Meghalaya	Jaintia Hills	28 37%
18	Mizoram	Serchhip	13 18%
19	Nagaland	Zunheboto	20 27%
20	Nagaland	Phek	21 28%
21	Orissa	Jagatsinghapur	20 26%
22	Orissa	Kendrapara	20 27%
23	Orissa	Bhadrak	24 31%
24	Orissa	Puri	26 35%
25	Orissa	Nayagarh	27 35%
26	Orissa	Cuttack	30 39%
27	Punjab	Nawanshahr	33 35%
28	Tamil Nadu	The Nilgiris	25 33%
29	Uttar Pradesh	Basti	25 27%
30	Uttar Pradesh	Kanpur Nagar	33 34%
31	Uttar Pradesh	Bijnor	34 36%
32	Uttar Pradesh	Etawah	35 36%
33	Uttar Pradesh	Shahjahanpur	38 40%
34	Uttaranchal	Almora	33 35%
35	West Bengal	Medinipur East	23 31%
1	West Bengal	Jalpaiguri	92 122%
2	Rajasthan	Dungarpur	98 122%
3	Delhi	BJRM Chest Clinic	117 123%
4	Gujarat	Panch Mahals	99 123%
5	Rajasthan	Udaipur	99 124%
6	Arunachal Pradesh	Pasighat DTC	93 124%
7	Rajasthan	Bhilwara	103 128%
8	Gujarat	Dahod	104 129%
9	West Bengal	Dakshin Dinajpur	99 132%
10	Orissa	Gajapati	100 134%
11	Orissa	Mayurbhanj	101 134%
12	Orissa	Rayagada	102 136%
13	Mizoram	Saiha	104 138%
14	Andhra Pradesh	Bhadrachalam	104 138%
15	Arunachal Pradesh	Bomdila DTC	108 144%
16	Rajasthan	Baran	116 145%
17	Sikkim	East	113 150%
18	Rajasthan	Tonk	121 151%
19	Delhi	SGM Chest Clinic	144 151%
20	Sikkim	South	115 153%
21	Sikkim	North	116 155%
22	Delhi	DDU Chest Clinic	149 157%
23	Orissa	Malkangiri	123 164%
24	Mizoram	Kolasib	140 186%

**Districts had cure rates less than 75%
among new sputum-positive patients**

Sl.No.	State	District	Cure rate of new smear positive patients ¹
1	Maharashtra	Nanded Waghela MC	45%
2	Madhya Pradesh	Tikamgarh	49%
3	Orissa	Nuapada	58%
4	Orissa	Gajapati	58%
5	Orissa	Anugul	60%
6	Karnataka	Gadag	62%
7	Nagaland	Kohima	63%
8	Uttar Pradesh	Agra	63%
9	Andhra Pradesh	Adilabad	64%
10	Uttar Pradesh	Jhansi	64%
11	Orissa	Baleshwar	65%
12	Karnataka	Gulbarga	66%
13	Assam	Cachar	66%
14	Madhya Pradesh	Ratlam	69%
15	Uttar Pradesh	Etah	70%
16	Punjab	Hoshiarpur	71%
17	Madhya Pradesh	Dindori	71%
18	Orissa	Malkangiri	72%
19	Manipur	Imphal East	72%
20	Karnataka	Davanagere	72%
21	Madhya Pradesh	Mandla	72%
22	Orissa	Puri	73%
23	Arunachal Pradesh	Along DTC	73%
24	Mizoram	Lawngtlai	73%
25	Uttar Pradesh	Fatehpur	73%
26	Madhya Pradesh	Chhindwara	73%
27	Orissa	Bhadrak	73%
28	Karnataka	Belgaum	73%
29	Karnataka	Bagalkot	74%
30	Orissa	Debagarh	74%
31	Uttar Pradesh	Budaun	74%
32	Madhya Pradesh	Chhatarpur	74%
33	Madhya Pradesh	Indore	75%
34	Punjab	Nawanshahr	75%
35	Uttar Pradesh	Mathura	75%
36	Karnataka	Bijapur	75%
37	Gujarat	Surat	75%
38	Haryana	Gurgaon	75%

New Smear Positive Case Detection Rate of India

Third quarter, 2004



Cure rate by district, India

Third quarter, 2003

